

# ADAM8 (N-17): sc-15499

## BACKGROUND

ADAM (a disintegrin and metalloprotease) proteins are a family of over 30 membrane-anchored, glycosylated, Zn<sup>2+</sup> dependent proteases that are involved in cell-cell, cell-matrix interface related processes including fertilization, muscle fusion, secretion of TNF $\alpha$  and modulation of the neurogenic function of Notch and Delta. ADAM proteins possess a signal-domain, a pro-domain, a metalloprotease domain, a disintegrin domain (integrin ligand), a cysteine-rich region, an epidermal growth factor-like domain, a transmembrane domain and a cytoplasmic tail. ADAMs are expressed in brain, testis, epididymis, ovary, breast, placenta, liver, heart, lung, bone and muscle, and catalyze proteolysis, adhesion, fusion and intracellular signaling. ADAM8 (CD156, MS2) is a 824 amino acid protein that contains a 16 amino acid signal peptide, a 637 amino acid extracellular region, a 25 amino acid transmembrane region, and a 146 amino acid cytoplasmic region, which possesses a cytoplasmic consensus Src homology 3 (SH3)-binding domain.

## REFERENCES

1. Yoshida, S., et al. 1990. Molecular cloning of cDNA encoding MS2 antigen, a novel cell surface antigen strongly expressed in murine monocytic lineage. *Int. Immunol.* 2: 585-591.
2. Wolfsberg, T.G., et al. 1995. ADAM, a novel family of membrane proteins containing a disintegrin and metalloprotease domain: multipotential functions in cell-cell and cell-matrix interactions. *J. Cell Biol.* 131: 275-8.
3. Yoshiyama, K., et al. 1997. CD156 (human ADAM8): expression, primary amino acid sequence, and gene location. *Genomics* 41: 56-62.
4. Stone, A.L., et al. 1999. Structure-function analysis of the ADAM family of disintegrin-like and metalloproteinase-containing proteins (review). *J. Protein Chem.* 18: 447-465.
5. Online Mendelian Inheritance in Man, OMIM<sup>™</sup>. 1999. Johns Hopkins University, Baltimore, MD. MIM Number: 602267. World Wide Web URL: <http://www.ncbi.nlm.nih.gov/omim/>
6. Primakoff, P. and Myles, D.G. 2000. The ADAM gene family: surface proteins with adhesion and protease activity. *Trends Genet.* 16: 83-87.

## CHROMOSOMAL LOCATION

Genetic locus: 1 (human) mapping to 10q26.3; Adam8 (mouse) mapping to 7 F3-F5.

## SOURCE

ADAM8 (N-17) is an affinity purified goat polyclonal antibody raised against a peptide mapping near the N-terminus of ADAM8 of human origin.

## PRODUCT

Each vial contains 200  $\mu$ g IgG in 1.0 ml of PBS with < 0.1% sodium azide and 0.1% gelatin.

Blocking peptide available for competition studies, sc-15499 P, (100  $\mu$ g peptide in 0.5 ml PBS containing < 0.1% sodium azide and 0.2% BSA).

## APPLICATIONS

ADAM8 (N-17) is recommended for detection of ADAM8 of human origin by Western Blotting (starting dilution 1:200, dilution range 1:100-1:1000), immunoprecipitation [1-2  $\mu$ g per 100-500  $\mu$ g of total protein (1 ml of cell lysate)], immunofluorescence (starting dilution 1:50, dilution range 1:50-1:500) and solid phase ELISA (starting dilution 1:30, dilution range 1:30-1:3000).

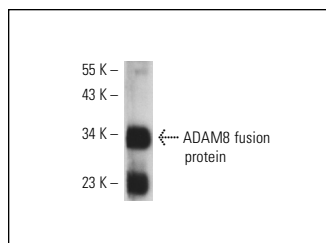
Suitable for use as control antibody for ADAM8 siRNA (h): sc-41406, ADAM8 shRNA Plasmid (h): sc-41406-SH and ADAM8 shRNA (h) Lentiviral Particles: sc-41406-V.

Molecular Weight of ADAM8: 89 kDa.

## RECOMMENDED SECONDARY REAGENTS

To ensure optimal results, the following support (secondary) reagents are recommended: 1) Western Blotting: use donkey anti-goat IgG-HRP: sc-2020 (dilution range: 1:2000-1:100,000) or Cruz Marker<sup>™</sup> compatible donkey anti-goat IgG-HRP: sc-2033 (dilution range: 1:2000-1:5000), Cruz Marker<sup>™</sup> Molecular Weight Standards: sc-2035, TBS Blotto A Blocking Reagent: sc-2333 and Western Blotting Luminol Reagent: sc-2048. 2) Immunoprecipitation: use Protein A/G PLUS-Agarose: sc-2003 (0.5 ml agarose/2.0 ml). 3) Immunofluorescence: use donkey anti-goat IgG-FITC: sc-2024 (dilution range: 1:100-1:400) or donkey anti-goat IgG-TR: sc-2783 (dilution range: 1:100-1:400) with UltraCruz<sup>™</sup> Mounting Medium: sc-24941.

## DATA



ADAM8 (N-17): sc-15499. Western blot analysis of human recombinant ADAM8 fusion protein.

## STORAGE

Store at 4° C, **\*\*DO NOT FREEZE\*\***. Stable for one year from the date of shipment. Non-hazardous. No MSDS required.

## RESEARCH USE

For research use only, not for use in diagnostic procedures.



Try **ADAM8 (F-5): sc-374421**, our highly recommended monoclonal alternative to ADAM8 (N-17).