

HPV18 E6 (C-17): sc-1585

BACKGROUND

Human papilloma viruses (HPVs) can be classified as either high risk or low risk according to their association with cancer. HPV16 and HPV18 are the most common of the high risk group while HPV6 and HPV11 are among the low risk types. Approximately 90% of cervical cancers contain HPV DNA of the high risk types. Mutational analysis has shown that the E6 and E7 genes of the high risk HPVs are necessary and sufficient for HPV transforming function. The specific interactions of the E6 and E7 proteins with p53 and pRB, respectively, correlate with HPV high and low risk classifications. The high risk HPV E7 proteins bind to pRB with a higher affinity than do the low risk HPV proteins, and only the high risk HPV E6 proteins form detectable complexes with p53 *in vitro*.

REFERENCES

1. Reich, N.C., et al. 1983. Two distinct mechanisms regulate the levels of a cellular tumor antigen, p53. *Mol. Cell. Biol.* 3: 2143-2150.
2. zur Hausen, H. and Schneider, A. 1987. The role of papilloma-viruses in human angongenital cancer. In Howley, P.M. and Salzman, N.P., eds., *The Papovaviridae, 2 Papillomaviruses*. New York: Plenum, 245-263.
3. Hawley-Nelson, P., et al. 1989. HPV16 E6 and E7 proteins cooperate to immortalize human foreskin keratinocytes. *EMBO J.* 13: 3905-3910.
4. Munger, K., et al. 1989. The E6 and E7 genes of the human papillomavirus type 16 together are necessary and sufficient for transformation of primary human keratinocytes. *J. Virol.* 63: 4417-4421.
5. Munger, K., et al. 1989. Complex formation of human papillomavirus E7 proteins with the retinoblastoma tumor suppressor gene product. *EMBO J.* 8: 4099-4105.
6. Riou, G., et al. 1990. Association between poor prognosis in early-stage invasive cervical carcinomas and non-detection of HPV DNA. *Lancet* 335: 1171-1174.

SOURCE

HPV18 E6 (C-17) is an affinity purified goat polyclonal antibody raised against a peptide mapping at the C-terminus of HPV18 E6 of viral origin.

PRODUCT

Each vial contains 200 µg IgG in 1.0 ml of PBS with < 0.1% sodium azide and 0.1% gelatin.

Blocking peptide available for competition studies, sc-1585 P, (100 µg peptide in 0.5 ml PBS containing < 0.1% sodium azide and 0.2% BSA).

STORAGE

Store at 4° C, ****DO NOT FREEZE****. Stable for one year from the date of shipment. Non-hazardous. No MSDS required.

PROTOCOLS

See our web site at www.scbt.com or our catalog for detailed protocols and support products.

APPLICATIONS

HPV18 E6 (C-17) is recommended for detection of HPV18 E6 by Western Blotting (starting dilution 1:200, dilution range 1:100-1:1000), immunoprecipitation [1-2 µg per 100-500 µg of total protein (1 ml of cell lysate)], immunofluorescence (starting dilution 1:50, dilution range 1:50-1:500) and solid phase ELISA (starting dilution 1:30, dilution range 1:30-1:3000).

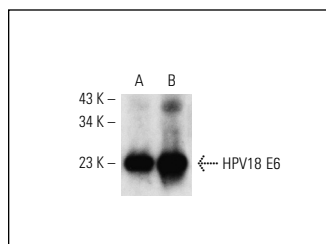
Molecular Weight of HPV18 E6: 18 kDa.

Positive Controls: RKO E6 whole cell lysate or Ca Ski whole cell lysate: sc-364360.

RECOMMENDED SECONDARY REAGENTS

To ensure optimal results, the following support (secondary) reagents are recommended: 1) Western Blotting: use donkey anti-goat IgG-HRP: sc-2020 (dilution range: 1:2000-1:100,000) or Cruz Marker™ compatible donkey anti-goat IgG-HRP: sc-2033 (dilution range: 1:2000-1:5000), Cruz Marker™ Molecular Weight Standards: sc-2035, TBS Blotto A Blocking Reagent: sc-2333 and Western Blotting Luminol Reagent: sc-2048. 2) Immunoprecipitation: use Protein A/G PLUS-Agarose: sc-2003 (0.5 ml agarose/2.0 ml). 3) Immunofluorescence: use donkey anti-goat IgG-FITC: sc-2024 (dilution range: 1:100-1:400) or donkey anti-goat IgG-TR: sc-2783 (dilution range: 1:100-1:400) with UltraCruz™ Mounting Medium: sc-24941.

DATA



Western blot analysis of HPV18 E6 expression in RKO E6 (A) and Ca Ski (B) whole cell lysates immunoprecipitated with HPV16 E6/18 E6 (C1P5): sc-460 and detected with HPV18 E6 (C-17): sc-1585.

SELECT PRODUCT CITATIONS

1. Le Roux, L.G., et al. 2003. Nuclear entry of high-risk human papillomavirus type 16 E6 oncoprotein occurs via several pathways. *J. Virol.* 77: 2330-2337.

RESEARCH USE

For research use only, not for use in diagnostic procedures.



Try **HPV18 E6 (G-7): sc-365089** or **HPV16 E6/18 E6 (C1P5): sc-460**, our highly recommended monoclonal alternatives to HPV18 E6 (C-17). Also, for AC, HRP, FITC, PE, Alexa Fluor® 488 and Alexa Fluor® 647 conjugates, see **HPV18 E6 (G-7): sc-365089**.