

# Syndecan-1 (h2): 293T Lysate: sc-159118

## BACKGROUND

Syndecan-1 (SYND1), also designated CD138, is a type I integral membrane proteoglycan that contains both chondroitin sulfate and heparan sulfate groups. It is expressed in mouse on pre-B cells, immature B cells and plasma cells. Syndecan-1 is also found on the basolateral surfaces of epithelial cells, endothelial cells of sprouting capillaries and embryonic condensing mesenchymal cells. Syndecan-1 functions as an extracellular matrix receptor which binds to collagens, Fibronectin and Thrombospondin. It has been shown to co-localize with Actin-rich filaments and may act to link the cytoskeleton to the extracellular matrix.

## REFERENCES

- Sanderson, R.D., Lalor, P. and Bernfield, M. 1989. B lymphocytes express and lose Syndecan at specific stages of differentiation. *Cell Regul.* 1: 27-35.
- Bernfield, M., Kokenyesi, R., Kato, M., Hinkes, M.T., Spring, J., Gallo, R.L. and Lose, E.J. 1992. Biology of the syndecans: a family of transmembrane heparan sulfate proteoglycans. *Annu. Rev. Cell Biol.* 8: 365-393.
- David, G. 1993. Integral membrane heparan sulfate proteoglycans. *FASEB J.* 7: 1023-1030.
- Kokenyesi, R. and Bernfield, M. 1994. Core protein structure and sequence determine the site and presence of heparan sulfate and chondroitin sulfate on Syndecan-1. *J. Biol. Chem.* 269: 12304-12309.
- Kato, M., Wang, H., Bernfield, M., Gallagher, J.T. and Turnbull, J.E. 1994. Cell surface Syndecan-1 on distinct cell types differs in fine structure and ligand binding of its heparan sulfate chains. *J. Biol. Chem.* 269: 18881-18890.
- Couchman, J.R. and Woods, A. 1996. Syndecans, signaling and cell adhesion. *J. Cell. Biochem.* 61: 578-584.
- Carey, D.J., Bendt, K.M. and Stahl, R.C. 1996. The cytoplasmic domain of Syndecan-1 is required for cytoskeleton association but not detergent insolubility. Identification of essential cytoplasmic domain residues. *J. Biol. Chem.* 271: 15253-15260.

## CHROMOSOMAL LOCATION

Genetic locus: SDC1 (human) mapping to 2p24.1.

## PRODUCT

Syndecan-1 (h2): 293T Lysate represents a lysate of human Syndecan-1 transfected 293T cells and is provided as 100 µg protein in 200 µl SDS-PAGE buffer.

## STORAGE

Store at -20° C. Repeated freezing and thawing should be minimized. Sample vial should be boiled once prior to use. Non-hazardous. No MSDS required.

## PROTOCOLS

See our web site at [www.scbt.com](http://www.scbt.com) for detailed protocols and support products.

## APPLICATIONS

Syndecan-1 (h2): 293T Lysate is suitable as a Western Blotting positive control for human reactive Syndecan-1 antibodies.

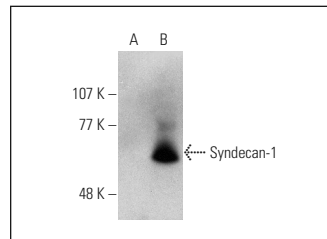
Control 293T Lysate: sc-117752 is available as a Western Blotting negative control lysate derived from non-transfected 293T cells.

Syndecan-1 (A-6): sc-390791 is recommended as a positive control antibody for Western Blot analysis of enhanced human Syndecan-1 expression in Syndecan-1 transfected 293T cells (starting dilution 1:100, dilution range 1:100-1:1,000).

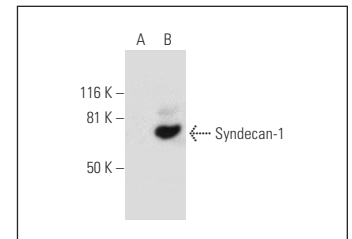
## RECOMMENDED SUPPORT REAGENTS

To ensure optimal results, the following support reagents are recommended:  
1) Western Blotting: use m-IgGκ BP-HRP: sc-516102 or m-IgGκ BP-HRP (Cruz Marker): sc-516102-CM (dilution range: 1:1000-1:10000), Cruz Marker™ Molecular Weight Standards: sc-2035, UltraCruz® Blocking Reagent: sc-516214 and Western Blotting Luminol Reagent: sc-2048.

## DATA



Syndecan-1 (A-6) HRP: sc-390791 HRP. Direct western blot analysis of Syndecan-1 expression in non-transfected: sc-117752 (A) and human Syndecan-1 transfected: sc-159118 (B) 293T whole cell lysates.



Syndecan-1 (A-6): sc-390791. Western blot analysis of Syndecan-1 expression in non-transfected: sc-117752 (A) and human Syndecan-1 transfected: sc-159118 (B) 293T whole cell lysates.

## RESEARCH USE

For research use only, not for use in diagnostic procedures.