

NSF (N-18): sc-15915

BACKGROUND

Syntaxins were originally thought to be docking proteins, but have more recently been categorized as anchoring proteins that anchor themselves to the cytoplasmic surfaces of cellular membranes. Syntaxins have been shown to bind to various proteins involved in exocytosis, including VAMPs (vesicle-associated membrane proteins), NSF (N-ethylmaleimide-sensitive factor), SNAP 25 (synaptosomal-associated protein of 25 kDa), SNAPs (soluble NSF attachment proteins) and synaptotagmin. VAMPs, also designated synaptobrevins, including VAMP-1 and VAMP-2, and synaptotagmin, a protein that may function as an inhibitor of exocytosis, are vesicular proteins. SNAPs, including α - and γ -SNAP, are cytoplasmic proteins that bind to a membrane receptor complex composed of VAMP, SNAP 25 and syntaxin. SNAPs mediate the membrane binding of NSF, which is essential for membrane fusion reactions.

CHROMOSOMAL LOCATION

Genetic locus: NSF (human) mapping to 17q21.31; Nsf (mouse) mapping to 11 E1.

SOURCE

NSF (N-18) is an affinity purified goat polyclonal antibody raised against a peptide mapping near the N-terminus of NSF of human origin.

PRODUCT

Each vial contains 200 μ g IgG in 1.0 ml of PBS with < 0.1% sodium azide and 0.1% gelatin.

Blocking peptide available for competition studies, sc-15915 P, (100 μ g peptide in 0.5 ml PBS containing < 0.1% sodium azide and 0.2% BSA).

STORAGE

Store at 4° C, ****DO NOT FREEZE****. Stable for one year from the date of shipment. Non-hazardous. No MSDS required.

APPLICATIONS

NSF (N-18) is recommended for detection of NSF of mouse, rat and human origin by Western Blotting (starting dilution 1:200, dilution range 1:100-1:1000), immunoprecipitation [1-2 μ g per 100-500 μ g of total protein (1 ml of cell lysate)], immunofluorescence (starting dilution 1:50, dilution range 1:50-1:500) and solid phase ELISA (starting dilution 1:30, dilution range 1:30-1:3000).

NSF (N-18) is also recommended for detection of NSF in additional species, including equine, canine, bovine, porcine and avian.

Suitable for use as control antibody for NSF siRNA (h): sc-36101, NSF siRNA (m): sc-36102, NSF shRNA Plasmid (h): sc-36101-SH, NSF shRNA Plasmid (m): sc-36102-SH, NSF shRNA (h) Lentiviral Particles: sc-36101-V and NSF shRNA (m) Lentiviral Particles: sc-36102-V.

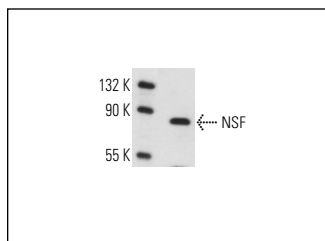
Molecular Weight of NSF: 76 kDa.

Positive Controls: EOC 20 whole cell lysate: sc-364187, mouse brain extract: sc-2253 or SK-N-MC cell lysate: sc-2237.

RECOMMENDED SECONDARY REAGENTS

To ensure optimal results, the following support (secondary) reagents are recommended: 1) Western Blotting: use donkey anti-goat IgG-HRP: sc-2020 (dilution range: 1:2000-1:100,000) or Cruz Marker™ compatible donkey anti-goat IgG-HRP: sc-2033 (dilution range: 1:2000-1:5000), Cruz Marker™ Molecular Weight Standards: sc-2035, TBS Blotto A Blocking Reagent: sc-2333 and Western Blotting Luminol Reagent: sc-2048. 2) Immunoprecipitation: use Protein A/G PLUS-Agarose: sc-2003 (0.5 ml agarose/2.0 ml). 3) Immunofluorescence: use donkey anti-goat IgG-FITC: sc-2024 (dilution range: 1:100-1:400) or donkey anti-goat IgG-TR: sc-2783 (dilution range: 1:100-1:400) with UltraCruz™ Mounting Medium: sc-24941.

DATA



NSF (N-18): sc-15915. Western blot analysis of NSF expression in EOC 20 whole cell lysate.

RESEARCH USE

For research use only, not for use in diagnostic procedures.

PROTOCOLS

See our web site at www.scbt.com or our catalog for detailed protocols and support products.



Try **NSF (A-3): sc-515043** or **NSF (B-9): sc-514931**, our highly recommended monoclonal alternatives to NSF (N-18).