

SCYL1BP1 (I-14): sc-160088

BACKGROUND

SCYLBP1 (SCYL-like 1-binding protein 1), also known RAB6-interacting golgin or NTKLBP1 (N-terminal kinase-like-binding protein 1), is a 394 amino acid protein belongs to the GORAB family. SCYL1BP1 is known to interact with SCYL1, RAB6A/RAB6 and RCHY1. Specifically localized to the Golgi apparatus, SCYL1BP1 exists as four alternatively spliced isoforms. Defects in SCYL1BP1 lead to geroderma osteodysplastica (GO), which is a condition of the skin that is characterized by a wrinkled, lax appearance. This rare autosomal recessive disease also causes osteoporosis, bone fractures and retarded growth. The gene encoding SCYL1BP1 maps to human chromosome 1, which spans 260 million base pairs, contains over 3,000 genes and comprises nearly 8% of the human genome. Chromosome 1 houses a large number of disease-associated genes, including those that are involved in familial adenomatous polyposis, Stickler syndrome, Parkinson's disease, Gaucher disease, schizophrenia and Usher syndrome. Aberrations in chromosome 1 are found in a variety of cancers, including head and neck cancer, malignant melanoma and multiple myeloma.

REFERENCES

1. Eudy, J.D., et al. 1998. Mutation of a gene encoding a protein with extracellular matrix motifs in Usher syndrome type IIa. *Science* 280: 1753-1757.
2. Tayebi, N., et al. 2001. Gaucher disease and parkinsonism: a phenotypic and genotypic characterization. *Mol. Genet. Metab.* 73: 313-321.
3. Plasilova, M., et al. 2004. Exclusion of an extracolonic disease modifier locus on chromosome 1p33-36 in a large Swiss familial adenomatous polyposis kindred. *Eur. J. Hum. Genet.* 12: 365-371.
4. Betarbet, R., et al. 2008. Fas-associated factor 1 and Parkinson's disease. *Neurobiol. Dis.* 31: 309-315.
5. Holliday, E.G., et al. 2009. Strong evidence for a novel schizophrenia risk locus on chromosome 1p31.1 in homogeneous pedigrees from Tamil Nadu, India. *Am. J. Psychiatry* 166: 206-215.
6. Balcárková, J., et al. 2009. Gain of chromosome arm 1q in patients in relapse and progression of multiple myeloma. *Cancer Genet. Cytogenet.* 192: 68-72.

CHROMOSOMAL LOCATION

Genetic locus: GORAB (human) mapping to 1q24.2; Gorab (mouse) mapping to 1 H2.1.

SOURCE

SCYL1BP1 (I-14) is an affinity purified goat polyclonal antibody raised against a peptide mapping within an internal region of SCYL1BP1 of human origin.

PRODUCT

Each vial contains 200 µg IgG in 1.0 ml of PBS with < 0.1% sodium azide and 0.1% gelatin.

Blocking peptide available for competition studies, sc-160088 P, (100 µg peptide in 0.5 ml PBS containing < 0.1% sodium azide and 0.2% BSA).

APPLICATIONS

SCYL1BP1 (I-14) is recommended for detection of SCYL1BP1 of mouse, rat and human origin by Western Blotting (starting dilution 1:200, dilution range 1:100-1:1000), immunoprecipitation [1-2 µg per 100-500 µg of total protein (1 ml of cell lysate)], immunofluorescence (starting dilution 1:50, dilution range 1:50-1:500) and solid phase ELISA (starting dilution 1:30, dilution range 1:30-1:3000).

SCYL1BP1 (I-14) is also recommended for detection of SCYL1BP1 in additional species, including equine, canine, porcine and avian.

Suitable for use as control antibody for SCYL1BP1 siRNA (h): sc-78600, SCYL1BP1 siRNA (m): sc-153278, SCYL1BP1 shRNA Plasmid (h): sc-78600-SH, SCYL1BP1 shRNA Plasmid (m): sc-153278-SH, SCYL1BP1 shRNA (h) Lentiviral Particles: sc-78600-V and SCYL1BP1 shRNA (m) Lentiviral Particles: sc-153278-V.

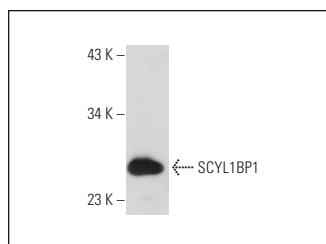
Molecular Weight of SCYL1BP1 isoforms: 45/28/25/22 kDa.

Positive Controls: Raji whole cell lysate: sc-364236 or HeLa whole cell lysate: sc-2200.

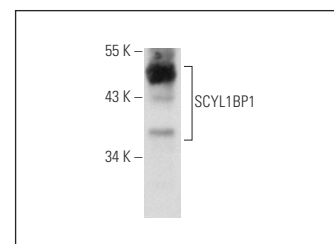
RECOMMENDED SECONDARY REAGENTS

To ensure optimal results, the following support (secondary) reagents are recommended: 1) Western Blotting: use donkey anti-goat IgG-HRP: sc-2020 (dilution range: 1:2000-1:100,000) or Cruz Marker™ compatible donkey anti-goat IgG-HRP: sc-2033 (dilution range: 1:2000-1:5000), Cruz Marker™ Molecular Weight Standards: sc-2035, TBS Blotto A Blocking Reagent: sc-2333 and Western Blotting Luminol Reagent: sc-2048. 2) Immunoprecipitation: use Protein A/G PLUS-Agarose: sc-2003 (0.5 ml agarose/2.0 ml). 3) Immunofluorescence: use donkey anti-goat IgG-FITC: sc-2024 (dilution range: 1:100-1:400) or donkey anti-goat IgG-TR: sc-2783 (dilution range: 1:100-1:400) with UltraCruz™ Mounting Medium: sc-24941.

DATA



SCYL1BP1 (I-14): sc-160088. Western blot analysis of SCYL1BP1 expression in Raji whole cell lysate.



SCYL1BP1 (I-14): sc-160088. Western blot analysis of SCYL1BP1 expression in HeLa whole cell lysate.

STORAGE

Store at 4° C, **DO NOT FREEZE**. Stable for one year from the date of shipment. Non-hazardous. No MSDS required.

RESEARCH USE

For research use only, not for use in diagnostic procedures.