

Abi-3 (D-15): sc-160123

BACKGROUND

The Abelson oncogene was initially identified as the viral transforming component of Abelson murine leukemia virus (A-MuLV). The Abelson gene (ABL1) encodes a SH2-domain bearing tyrosine kinase which conducts mitogenic signaling pursuant to growth factor receptor ligation. The Abl interactor proteins, Abi-1, Abi-2 and Abi-3, are SH3-domain containing proteins that bind to the proline-rich motifs of Abl and activate the kinase function. The Abi family members are thought to negatively regulate cell growth and transformation, including cellular transformation through v-Abl as well as mediate cell motility by regulating actin polymerization in lamellipodia and filopodia. Abi-3, also designated NESH, is a 366 amino acid protein that interacts with TARSH, a cellular senescence-related gene that acts as a trigger of tumor development.

REFERENCES

- Miyazaki, K., Matsuda, S., Ichigotani, Y., Takenouchi, Y., Hayashi, K., Fukuda, Y., Nimura, Y. and Hamaguchi, M. 2000. Isolation and characterization of a novel human gene (NESH) which encodes a putative signaling molecule similar to e3B1 protein. *Biochim. Biophys. Acta* 1493: 237-241.
- Ichigotani, Y., Yokozaki, S., Fukuda, Y., Hamaguchi, M. and Matsuda, S. 2002. Forced expression of NESH suppresses motility and metastatic dissemination of malignant cells. *Cancer Res.* 62: 2215-2219.
- Ichigotani, Y., Fujii, K., Hamaguchi, M. and Matsuda, S. 2002. In search of a function for the E3B1/Abi2/Argbp1/NESH family (Review). *Int. J. Mol. Med.* 9: 591-595.
- Hirao, N., Sato, S., Gotoh, T., Maruoka, M., Suzuki, J., Matsuda, S., Shishido, T. and Tani, K. 2006. NESH (Abi-3) is present in the Abi/WAVE complex but does not promote c-Abl-mediated phosphorylation. *FEBS Lett.* 580: 6464-6470.
- Matsuda, S., Yokozaki, S., Yoshida, H., Kitagishi, Y., Shirafuji, N. and Okumura, N. 2008. Insulin receptor substrate protein 53 (IRSp53) as a binding partner of antimetastasis molecule NESH, a member of Abelson interactor protein family. *Ann. Oncol.* 19: 1356-1357.
- Matsuda, S., Ichigotani, Y., Okumura, N., Yoshida, H., Kajiya, Y., Kitagishi, Y. and Shirafuji, N. 2008. NESH protein expression switches to the adverse effect of imatinib mesylate. *Mol. Oncol.* 2: 16-19.
- Wakoh, T., Uekawa, N., Terauchi, K., Sugimoto, M., Ishigami, A., Shimada, J. and Maruyama, M. 2009. Implication of p53-dependent cellular senescence related gene, TARSH in tumor suppression. *Biochem. Biophys. Res. Commun.* 380: 807-812.

CHROMOSOMAL LOCATION

Genetic locus: ABI3 (human) mapping to 17q21.32; Abi3 (mouse) mapping to 11 D.

SOURCE

Abi-3 (D-15) is an affinity purified goat polyclonal antibody raised against a peptide mapping within an internal region of Abi-3 of human origin.

PRODUCT

Each vial contains 200 µg IgG in 1.0 ml of PBS with < 0.1% sodium azide and 0.1% gelatin.

Blocking peptide available for competition studies, sc-160123 P, (100 µg peptide in 0.5 ml PBS containing < 0.1% sodium azide and 0.2% BSA).

APPLICATIONS

Abi-3 (D-15) is recommended for detection of Abi-3 of mouse, rat and human origin by Western Blotting (starting dilution 1:200, dilution range 1:100-1:1000), immunoprecipitation [1-2 µg per 100-500 µg of total protein (1 ml of cell lysate)], immunofluorescence (starting dilution 1:50, dilution range 1:50-1:500) and solid phase ELISA (starting dilution 1:30, dilution range 1:30-1:3000); non cross-reactive with Abi-1 or Abi-2.

Abi-3 (D-15) is also recommended for detection of Abi-3 in additional species, including canine, bovine, porcine and avian.

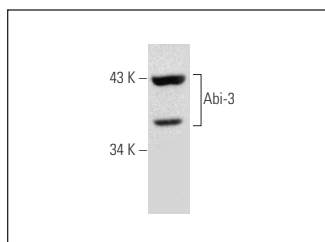
Suitable for use as control antibody for Abi-3 siRNA (h): sc-93770, Abi-3 siRNA (m): sc-140778, Abi-3 shRNA Plasmid (h): sc-93770-SH, Abi-3 shRNA Plasmid (m): sc-140778-SH, Abi-3 shRNA (h) Lentiviral Particles: sc-93770-V and Abi-3 shRNA (m) Lentiviral Particles: sc-140778-V.

Molecular Weight of (predicted) Abi-3: 39 kDa.

Molecular Weight of (observed) Abi-3: 43 kDa.

Positive Controls: mouse spleen extract: sc-2391, KNRK whole cell lysate: sc-2214 or WI-38 whole cell lysate: sc-364260.

DATA



Abi-3 (D-15): sc-160123. Western blot analysis of Abi-3 expression in KNRK whole cell lysate.

STORAGE

Store at 4° C, ****DO NOT FREEZE****. Stable for one year from the date of shipment. Non-hazardous. No MSDS required.

RESEARCH USE

For research use only, not for use in diagnostic procedures.



Try **Abi-3 (C-7): sc-376982**, our highly recommended monoclonal alternative to Abi-3 (D-15).