

ANKFY1 (D-15): sc-160136

BACKGROUND

ANKFY1 (ankyrin repeat and FYVE domain containing 1), also known as ankyrin repeats hooked to a zinc finger motif, ANKHZN or ZFYVE14, is a 1,169 amino acid peripheral membrane protein that also localizes to endosomal membranes and cytoplasm. Ubiquitously expressed, ANKFY1 is found at highest levels in adult brain and is implicated in vesicle and protein transport. ANKFY1 exists as two alternatively spliced isoforms, contains 21 ANK repeats, one BTB (POZ) domain and a single FYVE-type zinc finger. The gene encoding ANKFY1 maps to human chromosome 17, which comprises over 2.5% of the human genome and encodes over 1,200 genes. Two key tumor suppressor genes are associated with chromosome 17, namely, p53 and BRCA1.

REFERENCES

- Ito, K., et al. 1999. Molecular cloning of a novel 130-kDa cytoplasmic protein, Ankhzn, containing ankyrin repeats hooked to a zinc finger motif. *Biochem. Biophys. Res. Commun.* 257: 206-213.
- Kuriyama, H., et al. 2000. Characterization and chromosomal mapping of a novel human gene, ANKHZN. *Gene* 253: 151-160.
- Soussi, T., et al. 2000. p53 website and analysis of p53 gene mutations in human cancer: forging a link between epidemiology and carcinogenesis. *Hum. Mutat.* 15: 105-113.
- Piura, B., et al. 2001. Three primary malignancies related to BRCA1 mutation successively occurring in a BRCA1 185delAG mutation carrier. *Eur. J. Obstet. Gynecol. Reprod. Biol.* 97: 241-244.
- Minamoto, T., et al. 2001. Distinct pattern of p53 phosphorylation in human tumors. *Oncogene* 20: 3341-3347.
- Online Mendelian Inheritance in Man, OMIM™. 2003. Johns Hopkins University, Baltimore, MD. MIM Number: 607927. World Wide Web URL: <http://www.ncbi.nlm.nih.gov/omim/>
- Bouslam, N., et al. 2007. A novel locus for autosomal recessive spastic ataxia on chromosome 17p. *Hum. Genet.* 121: 413-420.

CHROMOSOMAL LOCATION

Genetic locus: PIK3C3 (human) mapping to 18q12.3; Pik3c3 (mouse) mapping to 18 B1.

SOURCE

ANKFY1 (D-15) is an affinity purified goat polyclonal antibody raised against a peptide mapping within an internal region of ANKFY1 of human origin.

PRODUCT

Each vial contains 200 µg IgG in 1.0 ml of PBS with < 0.1% sodium azide and 0.1% gelatin.

Blocking peptide available for competition studies, sc-160136 P, (100 µg peptide in 0.5 ml PBS containing < 0.1% sodium azide and 0.2% BSA).

RESEARCH USE

For research use only, not for use in diagnostic procedures.

APPLICATIONS

ANKFY1 (D-15) is recommended for detection of ANKFY1 of mouse, rat and human origin by Western Blotting (starting dilution 1:200, dilution range 1:100-1:1000), immunoprecipitation [1-2 µg per 100-500 µg of total protein (1 ml of cell lysate)], immunofluorescence (starting dilution 1:50, dilution range 1:50-1:500) and solid phase ELISA (starting dilution 1:30, dilution range 1:30-1:3000).

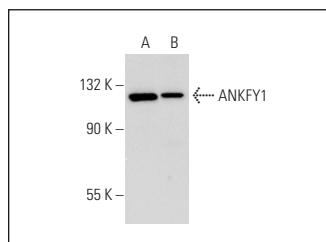
ANKFY1 (D-15) is also recommended for detection of ANKFY1 in additional species, including equine, canine, bovine, porcine and avian.

Suitable for use as control antibody for ANKFY1 siRNA (h): sc-93654, ANKFY1 siRNA (m): sc-141066, ANKFY1 shRNA Plasmid (h): sc-93654-SH, ANKFY1 shRNA Plasmid (m): sc-141066-SH, ANKFY1 shRNA (h) Lentiviral Particles: sc-93654-V and ANKFY1 shRNA (m) Lentiviral Particles: sc-141066-V.

Molecular Weight of ANKFY1: 130 kDa.

Positive Controls: Hep G2 cell lysate: sc-2227, U-251-MG whole cell lysate: sc-364176 or mouse brain extract: sc-2253.

DATA



ANKFY1 (D-15): sc-160136. Western blot analysis of ANKFY1 expression in U-251-MG whole cell lysate (A) and mouse brain tissue extract (B).

STORAGE

Store at 4° C, **DO NOT FREEZE**. Stable for one year from the date of shipment. Non-hazardous. No MSDS required.

PROTOCOLS

See our web site at www.scbt.com or our catalog for detailed protocols and support products.

MONOS
Satisfaction
Guaranteed

Try **ANKFY1 (B-6): sc-393353**, our highly recommended monoclonal alternative to ANKFY1 (D-15).