

# ASCC1 (N-12): sc-160156

## BACKGROUND

ASCC1 (activating signal cointegrator 1 complex subunit 1), also known as CGI-18 or ASC1p50, is a 400 amino acid cytoplasmic protein that is ubiquitously expressed and contains one KH domain. Existing as two alternatively spliced isoforms, ASC1 is part of the TRIP4 complex, which contains ASC1, ASC2 and ASC3. ASC1 enhances NF $\kappa$ B, SRF and c-Jun transactivation, and is encoded by a gene located on human chromosome 10, which houses over 1,200 genes and comprises nearly 4.5% of the human genome. Defects in some of the genes that map to chromosome 10 are associated with Charcot-Marie Tooth disease, Jackson-Weiss syndrome, Usher syndrome, nonsyndromic deafness, Wolman's syndrome, Cowden syndrome, multiple endocrine neoplasia type 2 and porphyria.

## REFERENCES

- Jung, D.J., Sung, H.S., Goo, Y.W., Lee, H.M., Park, O.K., Jung, S.Y., Lim, J., Kim, H.J., Lee, S.K., Kim, T.S., Lee, J.W. and Lee, Y.C. 2002. Novel transcription coactivator complex containing activating signal cointegrator 1. *Mol. Cell. Biol.* 22: 5203-5211.
- Goo, Y.H., Sohn, Y.C., Kim, D.H., Kim, S.W., Kang, M.J., Jung, D.J., Kwak, E., Barlev, N.A., Berger, S.L., Chow, V.T., Roeder, R.G., Azorsa, D.O., Meltzer, P.S., Suh, P.G., Song, E.J., Lee, K.J., Lee, Y.C. and Lee, J.W. 2003. Activating signal cointegrator 2 belongs to a novel steady-state complex that contains a subset of trithorax group proteins. *Mol. Cell. Biol.* 23: 140-149.
- Hong, S., Kim, S.H., Heo, M.A., Choi, Y.H., Park, M.J., Yoo, M.A., Kim, H.D., Kang, H.S. and Cheong, J. 2004. Coactivator ASC-2 mediates heat shock factor 1-mediated transactivation dependent on heat shock. *FEBS Lett.* 559: 165-170.
- Lee, S., Lee, J., Lee, S.K. and Lee, J.W. 2008. Activating signal cointegrator 2 is an essential adaptor to recruit Histone H3 lysine 4 methyltransferases MLL3 and MLL4 to the liver X receptors. *Mol. Endocrinol.* 22: 1312-1319.

## CHROMOSOMAL LOCATION

Genetic locus: ASCC1 (human) mapping to 10q22.1; Ascc1 (mouse) mapping to 10 B4.

## SOURCE

ASCC1 (N-12) is an affinity purified goat polyclonal antibody raised against a peptide mapping near the N-terminus of ASCC1 of human origin.

## PRODUCT

Each vial contains 200  $\mu$ g IgG in 1.0 ml of PBS with < 0.1% sodium azide and 0.1% gelatin.

Blocking peptide available for competition studies, sc-160156 P, (100  $\mu$ g peptide in 0.5 ml PBS containing < 0.1% sodium azide and 0.2% BSA).

## STORAGE

Store at 4° C, \*\*DO NOT FREEZE\*\*. Stable for one year from the date of shipment. Non-hazardous. No MSDS required.

## APPLICATIONS

ASCC1 (N-12) is recommended for detection of ASCC1 of mouse, rat and human origin by Western Blotting (starting dilution 1:200, dilution range 1:100-1:1000), immunoprecipitation [1-2  $\mu$ g per 100-500  $\mu$ g of total protein (1 ml of cell lysate)], immunofluorescence (starting dilution 1:50, dilution range 1:50-1:500) and solid phase ELISA (starting dilution 1:30, dilution range 1:30-1:3000).

Suitable for use as control antibody for ASCC1 siRNA (h): sc-90650, ASCC1 siRNA (m): sc-141295, ASCC1 shRNA Plasmid (h): sc-90650-SH, ASCC1 shRNA Plasmid (m): sc-141295-SH, ASCC1 shRNA (h) Lentiviral Particles: sc-90650-V and ASCC1 shRNA (m) Lentiviral Particles: sc-141295-V.

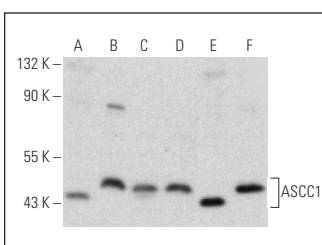
Molecular Weight of ASCC1: 46 kDa.

Positive Controls: Caki-1 cell lysate: sc-2224, Sol8 cell lysate: sc-2249 or A-673 cell lysate: sc-2414.

## RECOMMENDED SECONDARY REAGENTS

To ensure optimal results, the following support (secondary) reagents are recommended: 1) Western Blotting: use donkey anti-goat IgG-HRP: sc-2020 (dilution range: 1:2000-1:100,000) or Cruz Marker™ compatible donkey anti-goat IgG-HRP: sc-2033 (dilution range: 1:2000-1:5000), Cruz Marker™ Molecular Weight Standards: sc-2035, TBS Blotto A Blocking Reagent: sc-2333 and Western Blotting Luminol Reagent: sc-2048. 2) Immunoprecipitation: use Protein A/G PLUS-Agarose: sc-2003 (0.5 ml agarose/2.0 ml). 3) Immunofluorescence: use donkey anti-goat IgG-FITC: sc-2024 (dilution range: 1:100-1:400) or donkey anti-goat IgG-TR: sc-2783 (dilution range: 1:100-1:400) with UltraCruz™ Mounting Medium: sc-24941.

## DATA



ASCC1 (N-12): sc-160156. Western blot analysis of ASCC1 expression in Sol8 (A), Caki-1 (B), A-673 (C), Hep G2 (D), c4 (E) and SK-N-SH (F) whole cell lysates.

## RESEARCH USE

For research use only, not for use in diagnostic procedures.

## PROTOCOLS

See our web site at [www.scbt.com](http://www.scbt.com) or our catalog for detailed protocols and support products.