

# RBM25 (E-20): sc-160711

## BACKGROUND

RBM25 (RNA binding motif protein 25), also known as S164, RNPC7, RED120 or fSAP94, is a 784 amino acid protein that contains one PWI domain and one RRM (RNA recognition motif) domain. Localized to the cytoplasm, as well as to nuclear speckles, RBM25 functions as a splicing factor that is thought to stabilize the pre-mRNA-U1 snRNP complex and may couple splicing with mRNA 3'-end formation. The gene encoding RBM25 maps to human chromosome 14, which houses over 700 genes and comprises nearly 3.5% of the human genome. Chromosome 14 encodes the presenilin 1 (PSEN1) gene, which is one of the three key genes associated with the development of Alzheimer's disease (AD). The SERPINA1 gene is also located on chromosome 14 and, when defective, leads to the genetic disorder  $\alpha$ 1-antitrypsin deficiency, which is characterized by severe lung complications and liver dysfunction.

## REFERENCES

- Godbolt, A.K., Beck, J.A., Collinge, J., Garrard, P., Warren, J.D., Fox, N.C. and Rossor, M.N. 2004. A presenilin 1 R278I mutation presenting with language impairment. *Neurology* 63: 1702-1704.
- Stolk, J., Seersholm, N. and Kalsheker, N. 2006.  $\alpha$ 1-antitrypsin deficiency: current perspective on research, diagnosis, and management. *Int. J. Chron. Obstruct. Pulmon. Dis.* 1: 151-160.
- Vetrivel, K.S., Zhang, Y.W., Xu, H. and Thinakaran, G. 2006. Pathological and physiological functions of presenilins. *Mol. Neurodegener.* 1: 4.
- Albani, D., Roiter, I., Artuso, V., Batelli, S., Prato, F., Pesaresi, M., Galimberti, D., Scarpini, E., Bruni, A., Franceschi, M., Piras, M.R., Confaloni, A. and Forloni, G. 2007. Presenilin-1 mutation E318G and familial Alzheimer's disease in the Italian population. *Neurobiol. Aging* 28: 1682-1688.
- Filley, C.M., Rollins, Y.D., Anderson, C.A., Arciniegas, D.B., Howard, K.L., Murrell, J.R., Boyer, P.J., Kleinschmidt-DeMasters, B.K. and Ghetti, B. 2007. The genetics of very early onset Alzheimer disease. *Cogn. Behav. Neurol.* 20: 149-156.
- Fortes, P., Longman, D., McCracken, S., Ip, J.Y., Poot, R., Mattaj, I.W., Cáceres, J.F. and Blencowe, B.J. 2007. Identification and characterization of RED120: a conserved PWI domain protein with links to splicing and 3'-end formation. *FEBS Lett.* 581: 3087-3097.
- Zhou, A., Ou, A.C., Cho, A., Benz, E.J. and Huang, S.C. 2008. Novel splicing factor RBM25 modulates Bcl-x pre-mRNA 5' splice site selection. *Mol. Cell. Biol.* 28: 5924-5936.
- Online Mendelian Inheritance in Man, OMIM<sup>™</sup>. 2008. Johns Hopkins University, Baltimore, MD. MIM Number: 612427. World Wide Web URL: <http://www.ncbi.nlm.nih.gov/omim/>

## CHROMOSOMAL LOCATION

Genetic locus: RBM25 (human) mapping to 14q24.2; Rbm25 (mouse) mapping to 12 D1.

## SOURCE

RBM25 (E-20) is an affinity purified goat polyclonal antibody raised against a peptide mapping within an internal region of RBM25 of human origin.

## PRODUCT

Each vial contains 200  $\mu$ g IgG in 1.0 ml of PBS with < 0.1% sodium azide and 0.1% gelatin.

Blocking peptide available for competition studies, sc-160711 P, (100  $\mu$ g peptide in 0.5 ml PBS containing < 0.1% sodium azide and 0.2% BSA).

## APPLICATIONS

RBM25 (E-20) is recommended for detection of RBM25 of mouse, rat and human origin by Western Blotting (starting dilution 1:200, dilution range 1:100-1:1000), immunoprecipitation [1-2  $\mu$ g per 100-500  $\mu$ g of total protein (1 ml of cell lysate)], immunofluorescence (starting dilution 1:50, dilution range 1:50-1:500) and solid phase ELISA (starting dilution 1:30, dilution range 1:30-1:3000); non cross-reactive with other RBM family members.

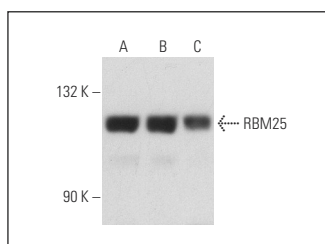
RBM25 (E-20) is also recommended for detection of RBM25 in additional species, including equine, canine, bovine, porcine and avian.

Suitable for use as control antibody for RBM25 siRNA (h): sc-92256, RBM25 siRNA (m): sc-152736, RBM25 shRNA Plasmid (h): sc-92256-SH, RBM25 shRNA Plasmid (m): sc-152736-SH, RBM25 shRNA (h) Lentiviral Particles: sc-92256-V and RBM25 shRNA (m) Lentiviral Particles: sc-152736-V.

Molecular Weight of RBM25: 120 kDa.

Positive Controls Jurkat nuclear extract: sc-2132, K-562 nuclear extract: sc-2130 or Ramos nuclear extract: sc-2153.

## DATA



RBM25 (E-20): sc-160711. Western blot analysis of RBM25 expression in Jurkat (A), K-562 (B) and Ramos (C) nuclear extracts.

## STORAGE

Store at 4° C, \*\*DO NOT FREEZE\*\*. Stable for one year from the date of shipment. Non-hazardous. No MSDS required.

## RESEARCH USE

For research use only, not for use in diagnostic procedures.

**MONOS**  
Satisfaction  
Guaranteed

Try **RBM25 (H-4): sc-374271**, our highly recommended monoclonal alternative to RBM25 (E-20).