

THAP10 (A-14): sc-160861

BACKGROUND

Members of the THAP (thanatos-associated protein) family of proteins contain a well conserved DNA-binding domain designated THAP-type zinc finger motif. Proteins containing the THAP-type zinc finger motif are commonly involved in transcriptional regulation, cell-cycle control, apoptosis and chromatin modification. The THAP-type zinc finger domain is suggested to have similarities with the site-specific DNA-binding domain (DBD) of *Drosophila* P element transposase. The conservation of the C2CH signature of residues, (Cys-Xaa(2-4)-Cys-Xaa(35-50)-Cys-Xaa(2)-His), define the THAP domain. THAP10 (THAP domain containing 10) is a 257 amino acid protein containing one THAP-type zinc finger and is encoded by a gene located on human chromosome 15q23.

REFERENCES

1. Roussigne, M., et al. 2003. THAP1 is a nuclear proapoptotic factor that links prostate-apoptosis-response-4 (Par-4) to PML nuclear bodies. *Oncogene* 22: 2432-2442.
2. Roussigne, M., et al. 2003. The THAP domain: a novel protein motif with similarity to the DNA-binding domain of P element transposase. *Trends Biochem. Sci.* 28: 66-69.
3. MacFarlan, T., et al. 2005. Human THAP7 is a chromatin-associated, histone tail-binding protein that represses transcription via recruitment of HDAC3 and nuclear hormone receptor corepressor. *J. Biol. Chem.* 280: 7346-7358.
4. Clouaire, T., et al. 2005. The THAP domain of THAP1 is a large C2CH module with zinc-dependent sequence-specific DNA-binding activity. *Proc. Natl. Acad. Sci. USA* 102: 6907-6912.
5. Liew, C.K., et al. 2007. Solution structure of the THAP domain from *Caenorhabditis elegans* C-terminal binding protein (CtBP). *J. Mol. Biol.* 366: 382-390.
6. Bessi re, D., et al. 2008. Structure-function analysis of the THAP zinc finger of THAP1, a large C2CH DNA-binding module linked to Rb/E2F pathways. *J. Biol. Chem.* 283: 4352-4363.
7. Balakrishnan, M.P., et al. 2009. THAP5 is a human cardiac-specific inhibitor of cell cycle that is cleaved by the proapoptotic Omi/HtrA2 protease during cell death. *Am. J. Physiol. Heart Circ. Physiol.* 297: H643-H653.
8. Online Mendelian Inheritance in Man, OMIMTM. 2009. Johns Hopkins University, Baltimore, MD. MIM Number: 612538. World Wide Web URL: <http://www.ncbi.nlm.nih.gov/omim/>

CHROMOSOMAL LOCATION

Genetic locus: THAP10 (human) mapping to 15q23.

SOURCE

THAP10 (A-14) is an affinity purified goat polyclonal antibody raised against a peptide mapping near the C-terminus of THAP10 of human origin.

RESEARCH USE

For research use only, not for use in diagnostic procedures.

PRODUCT

Each vial contains 200 µg IgG in 1.0 ml of PBS with < 0.1% sodium azide and 0.1% gelatin.

Blocking peptide available for competition studies, sc-160861 P, (100 µg peptide in 0.5 ml PBS containing < 0.1% sodium azide and 0.2% BSA).

APPLICATIONS

THAP10 (A-14) is recommended for detection of THAP10 of human origin by Western Blotting (starting dilution 1:200, dilution range 1:100-1:1000), immunoprecipitation [1-2 µg per 100-500 µg of total protein (1 ml of cell lysate)], immunofluorescence (starting dilution 1:50, dilution range 1:50-1:500) and solid phase ELISA (starting dilution 1:30, dilution range 1:30-1:3000); non cross-reactive with other THAP family members.

Suitable for use as control antibody for THAP10 siRNA (h): sc-89977, THAP10 shRNA Plasmid (h): sc-89977-SH and THAP10 shRNA (h) Lentiviral Particles: sc-89977-V.

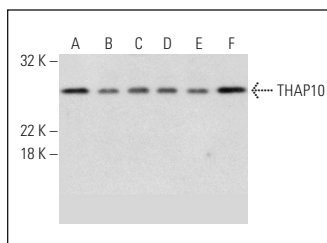
Molecular Weight of THAP10: 28 kDa.

Positive Controls: HeLa nuclear extract: sc-2120, Jurkat nuclear extract: sc-2132 or IMR-32 nuclear extract: sc-2148.

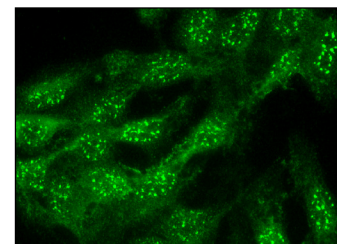
RECOMMENDED SECONDARY REAGENTS

To ensure optimal results, the following support (secondary) reagents are recommended: 1) Western Blotting: use donkey anti-goat IgG-HRP: sc-2020 (dilution range: 1:2000-1:100,000) or Cruz MarkerTM compatible donkey anti-goat IgG-HRP: sc-2033 (dilution range: 1:2000-1:5000), Cruz MarkerTM Molecular Weight Standards: sc-2035, TBS Blotto A Blocking Reagent: sc-2333 and Western Blotting Luminol Reagent: sc-2048. 2) Immunoprecipitation: use Protein A/G PLUS-Agarose: sc-2003 (0.5 ml agarose/2.0 ml). 3) Immunofluorescence: use donkey anti-goat IgG-FITC: sc-2024 (dilution range: 1:100-1:400) or donkey anti-goat IgG-TR: sc-2783 (dilution range: 1:100-1:400) with UltraCruzTM Mounting Medium: sc-24941.

DATA



THAP10 (A-14): sc-160861. Western blot analysis of THAP10 expression in HeLa (A), Jurkat (B), Hep G2 (C), IMR-32 (D), SK-N-MC (E) and SK-BR-3 (F) nuclear extracts.



THAP10 (A-14): sc-160861. Immunofluorescence staining of formalin-fixed Hep G2 cells showing nuclear and cytoplasmic localization.

STORAGE

Store at 4° C, **DO NOT FREEZE**. Stable for one year from the date of shipment. Non-hazardous. No MSDS required.