

# WSB1 (C-15): sc-160922

## BACKGROUND

WD-repeats are motifs that are found in a variety of proteins and are characterized by a conserved core of 40-60 amino acids that commonly form a tertiary propeller structure. While proteins that contain WD-repeats participate in a wide range of cellular functions, they are generally involved in regulatory mechanisms concerning chromatin assembly, cell cycle control, signal transduction, RNA processing, apoptosis and vesicular trafficking. WSB1 (WD repeat and SOCS box-containing 1), also known as SWIP1, is a 421 amino acid protein that contains one SOCS box domain and six WD repeats. Expressed as multiple alternatively spliced isoforms, WSB1 is thought to function as part of an SCF-like ECS (Elongin-Cullin-SOCS-box protein) E3 ubiquitin ligase complex that mediates the ubiquitination and proteasomal degradation of target proteins, such as DIO2. Overexpression of WSB1 is implicated in pancreatic cancer progression, suggesting a role for WSB1 in carcinogenesis.

## CHROMOSOMAL LOCATION

Genetic locus: WSB1 (human) mapping to 17q11.1; Wsb1 (mouse) mapping to 11 B5.

## SOURCE

WSB1 (C-15) is an affinity purified goat polyclonal antibody raised against a peptide mapping near the C-terminus of WSB1 of human origin.

## PRODUCT

Each vial contains 200 µg IgG in 1.0 ml of PBS with < 0.1% sodium azide and 0.1% gelatin.

Blocking peptide available for competition studies, sc-160922 P, (100 µg peptide in 0.5 ml PBS containing < 0.1% sodium azide and 0.2% BSA).

## STORAGE

Store at 4° C, **\*\*DO NOT FREEZE\*\***. Stable for one year from the date of shipment. Non-hazardous. No MSDS required.

## APPLICATIONS

WSB1 (C-15) is recommended for detection of WSB1 of mouse, rat and human origin by Western Blotting (starting dilution 1:200, dilution range 1:100-1:1000), immunoprecipitation [1-2 µg per 100-500 µg of total protein (1 ml of cell lysate)], immunofluorescence (starting dilution 1:50, dilution range 1:50-1:500) and solid phase ELISA (starting dilution 1:30, dilution range 1:30-1:3000); non cross-reactive with WSB2.

WSB1 (C-15) is also recommended for detection of WSB1 in additional species, including equine, canine, bovine and porcine.

Suitable for use as control antibody for WSB1 siRNA (h): sc-93766, WSB1 siRNA (m): sc-155361, WSB1 shRNA Plasmid (h): sc-93766-SH, WSB1 shRNA Plasmid (m): sc-155361-SH, WSB1 shRNA (h) Lentiviral Particles: sc-93766-V and WSB1 shRNA (m) Lentiviral Particles: sc-155361-V.

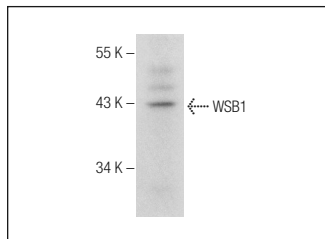
Molecular Weight of WSB1 isoforms 1/2: 47/31 kDa.

Positive Controls: WEHI-3 cell lysate: sc-3815.

## RECOMMENDED SECONDARY REAGENTS

To ensure optimal results, the following support (secondary) reagents are recommended: 1) Western Blotting: use donkey anti-goat IgG-HRP: sc-2020 (dilution range: 1:2000-1:100,000) or Cruz Marker™ compatible donkey anti-goat IgG-HRP: sc-2033 (dilution range: 1:2000-1:5000), Cruz Marker™ Molecular Weight Standards: sc-2035, TBS Blotto A Blocking Reagent: sc-2333 and Western Blotting Luminol Reagent: sc-2048. 2) Immunoprecipitation: use Protein A/G PLUS-Agarose: sc-2003 (0.5 ml agarose/2.0 ml). 3) Immunofluorescence: use donkey anti-goat IgG-FITC: sc-2024 (dilution range: 1:100-1:400) or donkey anti-goat IgG-TR: sc-2783 (dilution range: 1:100-1:400) with UltraCruz™ Mounting Medium: sc-24941.

## DATA



WSB1 (C-15): sc-160922. Western blot analysis of WSB1 expression in WEHI-3 whole cell lysate.

## RESEARCH USE

For research use only, not for use in diagnostic procedures.

## PROTOCOLS

See our web site at [www.scbt.com](http://www.scbt.com) or our catalog for detailed protocols and support products.

**MONOS**  
Satisfaction  
Guaranteed

Try **WSB1 (A-10): sc-393483** or **WSB1 (A-7): sc-393200**, our highly recommended monoclonal alternatives to WSB1 (C-15).