

NHE-1 (T-20): sc-16096

BACKGROUND

Na⁺/H⁺ exchangers-1-6 (Na⁺/H⁺ antiporters, NHE-1-6) are integral membrane proteins that are expressed in most mammalian tissues, where they regulate intracellular pH and cell volume. NHEs mediate the secondary active extrusion of hydrogen (H⁺) ions out of cells in exchange for extracellular sodium (Na⁺). Excluding NHE-1, which is ubiquitously expressed, the NHE isoforms (NHE-2-6) have distinct tissue- and cell type-dependent expression and inhibitory characteristics by amiloride analogs. Human NHE-1 protein, known also as solute carrier family 9 isoform-1, SLC9A1, is a ten transmembrane domain-spanning receptor that contains an N-terminal amphipathic domain and two putative N-glycosylation sites.

CHROMOSOMAL LOCATION

Genetic locus: SLC9A1 (human) mapping to 1p36.11; Slc9a1 (mouse) mapping to 4 D2.3.

SOURCE

NHE-1 (T-20) is an affinity purified goat polyclonal antibody raised against a peptide mapping near the N-terminus of NHE-1 of human origin.

PRODUCT

Each vial contains 200 µg IgG in 1.0 ml of PBS with < 0.1% sodium azide and 0.1% gelatin.

Blocking peptide available for competition studies, sc-16096 P, (100 µg peptide in 0.5 ml PBS containing < 0.1% sodium azide and 0.2% BSA).

STORAGE

Store at 4° C, ****DO NOT FREEZE****. Stable for one year from the date of shipment. Non-hazardous. No MSDS required.

APPLICATIONS

NHE-1 (T-20) is recommended for detection of NHE-1 of mouse, rat and human origin by Western Blotting (starting dilution 1:200, dilution range 1:100-1:1000), immunofluorescence (starting dilution 1:50, dilution range 1:50-1:500), immunohistochemistry (including paraffin-embedded sections) (starting dilution 1:50, dilution range 1:50-1:500) and solid phase ELISA (starting dilution 1:30, dilution range 1:30-1:3000).

NHE-1 (T-20) is also recommended for detection of NHE-1 in additional species, including equine, canine, bovine and porcine.

Suitable for use as control antibody for NHE-1 siRNA (h): sc-42650, NHE-1 siRNA (m): sc-42651, NHE-1 shRNA Plasmid (h): sc-42650-SH, NHE-1 shRNA Plasmid (m): sc-42651-SH, NHE-1 shRNA (h) Lentiviral Particles: sc-42650-V and NHE-1 shRNA (m) Lentiviral Particles: sc-42651-V.

Molecular Weight of NHE-1 precursor: 90 kDa.

Molecular Weight of glycosylated NHE-1: 110-130 kDa.

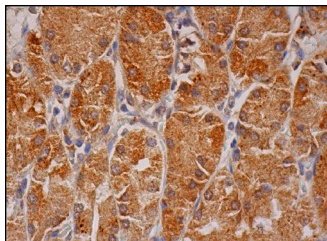
Molecular Weight of NHE-1 dimer: 210 kDa.

Positive Controls: MOLT-4 cell lysate: sc-2233 or K-562 whole cell lysate: sc-2203.

RECOMMENDED SECONDARY REAGENTS

To ensure optimal results, the following support (secondary) reagents are recommended: 1) Western Blotting: use donkey anti-goat IgG-HRP: sc-2020 (dilution range: 1:2000-1:100,000) or Cruz Marker™ compatible donkey anti-goat IgG-HRP: sc-2033 (dilution range: 1:2000-1:5000), Cruz Marker™ Molecular Weight Standards: sc-2035, TBS Blotto A Blocking Reagent: sc-2333 and Western Blotting Luminol Reagent: sc-2048. 2) Immunofluorescence: use donkey anti-goat IgG-FITC: sc-2024 (dilution range: 1:100-1:400) or donkey anti-goat IgG-TR: sc-2783 (dilution range: 1:100-1:400) with UltraCruz™ Mounting Medium: sc-24941. 3) Immunohistochemistry: use ImmunoCruz™: sc-2053 or ABC: sc-2023 goat IgG Staining Systems.

DATA



NHE-1 (T-20): sc-16096. Immunoperoxidase staining of formalin fixed, paraffin-embedded human lower stomach tissue showing cytoplasmic staining of glandular cells.

RESEARCH USE

For research use only, not for use in diagnostic procedures.

PROTOCOLS

See our web site at www.scbt.com or our catalog for detailed protocols and support products.


 MONOS
Satisfaction
Guaranteed

Try **NHE-1 (54): sc-136239**, our highly recommended monoclonal alternative to NHE-1 (T-20).