

CD300LB (C-13): sc-161003

BACKGROUND

CD300LB (CD300 molecule-like family member B), also known as CLM7, IREM3, TREM5 or CD300b, is a 201 amino acid single-pass type I membrane protein belonging to the CD300 family. Expressed exclusively in Myeloid lineages, CD300LB interacts with ITAM-bearing adapter DAP12 (DNAX-activating protein of 12 kDa), which enhances cell surface expression and activation properties. CD300LB is composed of a single extracellular Ig V-type domain followed by a transmembrane region containing a positively charged Lysine residue, a common feature among receptors that associate with activating adaptor proteins. CD300LB acts as a nonclassical activating receptor of the immunoglobulin (Ig) superfamily that is able to trigger signals by coupling distinct mediators and thus initiating different signaling pathways.

REFERENCES

1. Jackson, D.G., Hart, D.N., Starling, G. and Bell, J.I. 1992. Molecular cloning of a novel member of the immunoglobulin gene superfamily homologous to the polymeric immunoglobulin receptor. *Eur. J. Immunol.* 22: 1157-1163.
2. Lanier, L.L., Corliss, B.C., Wu, J., Leong, C. and Phillips, J.H. 1998. Immuno-receptor DAP12 bearing a tyrosine-based activation motif is involved in activating NK cells. *Nature* 391: 703-707.
3. Wu, J., Cherwinski, H., Spies, T., Phillips, J.H. and Lanier, L.L. 2000. DAP10 and DAP12 form distinct, but functionally cooperative, receptor complexes in natural killer cells. *J. Exp. Med.* 192: 1059-1068.
4. Martínez-Barriocanal, A. and Sayós, J. 2006. Molecular and functional characterization of CD300B, a new activating immunoglobulin receptor able to transduce signals through two different pathways. *J. Immunol.* 177: 2819-2830.
5. Online Mendelian Inheritance in Man, OMIM™. 2007. Johns Hopkins University, Baltimore, MD. MIM Number: 610705: World Wide Web URL: <http://www.ncbi.nlm.nih.gov/omim/>
6. Yamanishi, Y., Kitaura, J., Izawa, K., Matsuoka, T., Oki, T., Lu, Y., Shibata, F., Yamazaki, S., Kumagai, H., Nakajima, H., Maeda-Yamamoto, M., Tybulewicz, V.L., Takai, T. and Kitamura, T. 2008. Analysis of mouse LMIR5/CLM-7 as an activating receptor: differential regulation of LMIR5/CLM-7 in mouse versus human cells. *Blood* 111: 688-698.
7. Can, I., Tahara-Hanaoka, S., Hitomi, K., Nakano, T., Nakahashi-Oda, C., Kurita, N., Honda, S., Shibuya, K. and Shibuya, A. 2008. Caspase-independent cell death by CD300LF (MAIR-V), an inhibitory immunoglobulin-like receptor on Myeloid cells. *J. Immunol.* 180: 207-213.

CHROMOSOMAL LOCATION

Genetic locus: CD300LB (human) mapping to 17q25.1.

STORAGE

Store at 4° C, ****DO NOT FREEZE****. Stable for one year from the date of shipment. Non-hazardous. No MSDS required.

RESEARCH USE

For research use only, not for use in diagnostic procedures.

SOURCE

CD300LB (C-13) is an affinity purified goat polyclonal antibody raised against a peptide mapping within a C-terminal cytoplasmic domain of CD300LB of human origin.

PRODUCT

Each vial contains 200 µg IgG in 1.0 ml of PBS with < 0.1% sodium azide and 0.1% gelatin.

Blocking peptide available for competition studies, sc-161003 P, (100 µg peptide in 0.5 ml PBS containing < 0.1% sodium azide and 0.2% BSA).

APPLICATIONS

CD300LB (C-13) is recommended for detection of CD300LB of human origin by Western Blotting (starting dilution 1:200, dilution range 1:100-1:1000), immunoprecipitation [1-2 µg per 100-500 µg of total protein (1 ml of cell lysate)], immunofluorescence (starting dilution 1:50, dilution range 1:50-1:500) and solid phase ELISA (starting dilution 1:30, dilution range 1:30-1:3000); non cross-reactive with CD300LF or CD300LG.

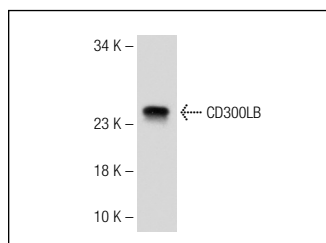
Suitable for use as control antibody for CD300LB siRNA (h): sc-94094, CD300LB shRNA Plasmid (h): sc-94094-SH and CD300LB shRNA (h) Lentiviral Particles: sc-94094-V.

Molecular Weight of CD300LB: 23 kDa.

RECOMMENDED SECONDARY REAGENTS

To ensure optimal results, the following support (secondary) reagents are recommended: 1) Western Blotting: use donkey anti-goat IgG-HRP: sc-2020 (dilution range: 1:2000-1:100,000) or Cruz Marker™ compatible donkey anti-goat IgG-HRP: sc-2033 (dilution range: 1:2000-1:5000), Cruz Marker™ Molecular Weight Standards: sc-2035, TBS Blotto A Blocking Reagent: sc-2333 and Western Blotting Luminol Reagent: sc-2048. 2) Immunoprecipitation: use Protein A/G PLUS-Agarose: sc-2003 (0.5 ml agarose/2.0 ml). 3) Immunofluorescence: use donkey anti-goat IgG-FITC: sc-2024 (dilution range: 1:100-1:400) or donkey anti-goat IgG-TR: sc-2783 (dilution range: 1:100-1:400) with UltraCruz™ Mounting Medium: sc-24941.

DATA



CD300LB (C-13): sc-161003. Western blot analysis of CD300LB expression in LADMAC whole cell lysate.

PROTOCOLS

See our web site at www.scbt.com or our catalog for detailed protocols and support products.