

MYBBP1A (S-14): sc-161122

BACKGROUND

MYBBP1A (MYB binding protein (P160) 1a), also known as P160 or PAP2, is a 1,328 amino acid protein that localizes to both the nucleus and the cytoplasm and is thought to shuttle between these 2 subcellular compartments. Expressed ubiquitously, MYBBP1A interacts with sequence specific DNA binding proteins, such as c-Jun and c-Myb, and, via these interactions, is thought to activate or repress transcription, thereby mediating gene expression. Due to its role in transcriptional regulation, MYBBP1A may be involved in tumor transformation and metastasis. MYBBP1A exists as two alternatively spliced isoforms and shares 80% sequence identity with its mouse counterpart, suggesting a conserved role between species.

REFERENCES

1. Favier, D. and Gonda, T.J. 1994. Detection of proteins that bind to the leucine zipper motif of c-Myb. *Oncogene* 9: 305-311.
2. Tavner, F.J., et al. 1998. Molecular cloning reveals that the p160 Myb-binding protein is a novel, predominantly nucleolar protein which may play a role in transactivation by Myb. *Mol. Cell. Biol.* 18: 989-1002.
3. Keough, R., et al. 1999. Molecular cloning and chromosomal mapping of the human homologue of MYB binding protein (P160) 1A (MYBBP1A) to 17p13.3. *Genomics* 62: 483-489.
4. Online Mendelian Inheritance in Man, OMIM[™]. 2000. Johns Hopkins University, Baltimore, MD. MIM Number: 604885. World Wide Web URL: <http://www.ncbi.nlm.nih.gov/omim/>
5. Fan, M., et al. 2004. Suppression of mitochondrial respiration through recruitment of p160 myb binding protein to PGC-1 α : modulation by p38 MAPK. *Genes Dev.* 18: 278-289.
6. Owen, H.R., et al. 2007. MYBBP1A is a novel repressor of NF κ B. *J. Mol. Biol.* 366: 725-736.

CHROMOSOMAL LOCATION

Genetic locus: MYBBP1A (human) mapping to 17p13.2; Mybbp1a (mouse) mapping to 11 B4.

SOURCE

MYBBP1A (S-14) is an affinity purified goat polyclonal antibody raised against a peptide mapping within an internal region of MYBBP1A of human origin.

PRODUCT

Each vial contains 200 μ g IgG in 1.0 ml of PBS with < 0.1% sodium azide and 0.1% gelatin.

Blocking peptide available for competition studies, sc-161122 P, (100 μ g peptide in 0.5 ml PBS containing < 0.1% sodium azide and 0.2% BSA).

STORAGE

Store at 4° C, ****DO NOT FREEZE****. Stable for one year from the date of shipment. Non-hazardous. No MSDS required.

APPLICATIONS

MYBBP1A (S-14) is recommended for detection of MYBBP1A of mouse, rat and human origin by Western Blotting (starting dilution 1:200, dilution range 1:100-1:1000), immunoprecipitation [1-2 μ g per 100-500 μ g of total protein (1 ml of cell lysate)], immunofluorescence (starting dilution 1:50, dilution range 1:50-1:500), immunohistochemistry (including paraffin-embedded sections) (starting dilution 1:50, dilution range 1:50-1:500) and solid phase ELISA (starting dilution 1:30, dilution range 1:30-1:3000).

MYBBP1A (S-14) is also recommended for detection of MYBBP1A in additional species, including equine, canine, bovine and porcine.

Suitable for use as control antibody for MYBBP1A siRNA (h): sc-93603, MYBBP1A siRNA (m): sc-149729, MYBBP1A shRNA Plasmid (h): sc-93603-SH, MYBBP1A shRNA Plasmid (m): sc-149729-SH, MYBBP1A shRNA (h) Lentiviral Particles: sc-93603-V and MYBBP1A shRNA (m) Lentiviral Particles: sc-149729-V.

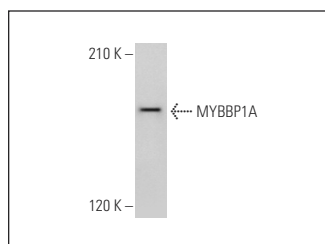
Molecular Weight of MYBBP1A: 160 kDa.

Positive Controls: NIH/3T3 whole cell lysate: sc-2210 or rat brain extract: sc-2392.

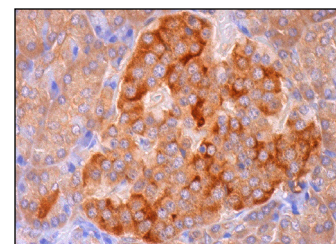
RECOMMENDED SECONDARY REAGENTS

To ensure optimal results, the following support (secondary) reagents are recommended: 1) Western Blotting: use donkey anti-goat IgG-HRP: sc-2020 (dilution range: 1:2000-1:100,000) or Cruz Marker[™] compatible donkey anti-goat IgG-HRP: sc-2033 (dilution range: 1:2000-1:5000), Cruz Marker[™] Molecular Weight Standards: sc-2035, TBS Blotto A Blocking Reagent: sc-2333 and Western Blotting Luminol Reagent: sc-2048. 2) Immunoprecipitation: use Protein A/G PLUS-Agarose: sc-2003 (0.5 ml agarose/2.0 ml). 3) Immunofluorescence: use donkey anti-goat IgG-FITC: sc-2024 (dilution range: 1:100-1:400) or donkey anti-goat IgG-TR: sc-2783 (dilution range: 1:100-1:400) with UltraCruz[™] Mounting Medium: sc-24941. 4) Immunohistochemistry: use ImmunoCruz[™]: sc-2053 or ABC: sc-2023 goat IgG Staining Systems.

DATA



MYBBP1A (S-14): sc-161122. Western blot analysis of MYBBP1A expression in rat brain tissue extract.



MYBBP1A (S-14): sc-161122. Immunoperoxidase staining of formalin fixed, paraffin-embedded human pancreas tissue showing cytoplasmic staining of exocrine glandular cells and Islets of Langerhans.

RESEARCH USE

For research use only, not for use in diagnostic procedures.