

# ORMDL1/2/3 (E-15): sc-161143

## BACKGROUND

The ORMDL (ORM1-like) family of proteins consist of ORMDL1, ORMDL2 and ORMDL3; all of which are human homologs of the *S. cerevisiae* ORM1 protein. Localized to the membrane of the endoplasmic reticulum, ORMDLs are multi-pass membrane proteins that are implicated in  $\gamma$ -secretase (BACE) function, as well as expression of Presenilin (PSI), a protein involved in Alzheimer's disease (AD). ORMDL1 (ORM1-like protein 1), also known as Adoplin-1, is a widely expressed 153 amino acid member of the ORMDL family. Expression of ORMDL1 is down-regulated in PSI mutations, suggesting a possible role as a therapeutic target for AD. ORMDL2 (ORM1-like protein 2), also known as Adoplin-2, and ORMDL3 (ORM1-like protein 3) are expressed in tissues such as heart, brain, lung, liver and kidney. ORMDL3 exists as two isoforms due to alternative splicing events and may be a determinant of susceptibility to childhood asthma.

## REFERENCES

- Hjelmqvist, L., Tuson, M., Marfany, G., Herrero, E., Balcells, S. and González-Duarte, R. 2002. ORMDL proteins are a conserved new family of endoplasmic reticulum membrane proteins. *Genome Biol.* 3: RESEARCH0027.
- Moffatt, M.F., Kabesch, M., Liang, L., Dixon, A.L., Strachan, D., Heath, S., Depner, M., von Berg, A., Bufer, A., Rietschel, E., Heinzmann, A., Simma, B., Frischer, T., Willis-Owen, S.A., Wong, K.C., Illig, T., Vogelberg, C., Weiland, S.K., von Mutius, E., Abecasis, G.R., Farrall, M., Gut, I.G., Lathrop, G.M. and Cookson, W.O. 2007. Genetic variants regulating ORMDL3 expression contribute to the risk of childhood asthma. *Nature* 448: 470-473.
- Araki, W., Takahashi-Sasaki, N., Chui, D.H., Saito, S., Takeda, K., Shirohani, K., Takahashi, K., Murayama, K.S., Kametani, F., Shiraishi, H., Komano, H. and Tabira, T. 2007. A family of membrane proteins associated with Presenilin expression and  $\gamma$ -secretase function. *FASEB J.* 22: 819-827.
- Hirota, T., Harada, M., Sakashita, M., Doi, S., Miyatake, A., Fujita, K., Enomoto, T., Ebisawa, M., Yoshihara, S., Noguchi, E., Saito, H., Nakamura, Y. and Tamari, M. 2007. Genetic polymorphism regulating ORM1-like 3 (*Saccharomyces cerevisiae*) expression is associated with childhood atopic asthma in a Japanese population. *J. Allergy Clin. Immunol.* 121:769-770

## SOURCE

ORMDL1/2/3 (E-15) is an affinity purified goat polyclonal antibody raised against a peptide mapping within an internal region of ORMDL3 of human origin.

## PRODUCT

Each vial contains 200  $\mu$ g IgG in 1.0 ml of PBS with < 0.1% sodium azide and 0.1% gelatin.

Blocking peptide available for competition studies, sc-161143 P, (100  $\mu$ g peptide in 0.5 ml PBS containing < 0.1% sodium azide and 0.2% BSA).

## STORAGE

Store at 4° C, **\*\*DO NOT FREEZE\*\***. Stable for one year from the date of shipment. Non-hazardous. No MSDS required.

## APPLICATIONS

ORMDL1/2/3 (E-15) is recommended for detection of ORMDL1, ORMDL2 and ORMDL3 of mouse, rat and human origin by Western Blotting (starting dilution 1:200, dilution range 1:100-1:1000), immunoprecipitation [1-2  $\mu$ g per 100-500  $\mu$ g of total protein (1 ml of cell lysate)], immunofluorescence (starting dilution 1:50, dilution range 1:50-1:500) and solid phase ELISA (starting dilution 1:30, dilution range 1:30-1:3000).

ORMDL1/2/3 (E-15) is also recommended for detection of ORMDL1, ORMDL2 and ORMDL3 in additional species, including equine, canine, bovine, porcine and avian.

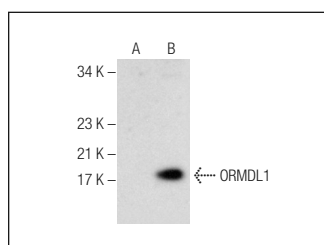
Molecular Weight of ORMDL1/2/3: 17 kDa.

Positive Controls: ORMDL1 (h): 293T Lysate: sc-122257.

## RECOMMENDED SECONDARY REAGENTS

To ensure optimal results, the following support (secondary) reagents are recommended: 1) Western Blotting: use donkey anti-goat IgG-HRP: sc-2020 (dilution range: 1:2000-1:100,000) or Cruz Marker™ compatible donkey anti-goat IgG-HRP: sc-2033 (dilution range: 1:2000-1:5000), Cruz Marker™ Molecular Weight Standards: sc-2035, TBS Blotto A Blocking Reagent: sc-2333 and Western Blotting Luminol Reagent: sc-2048. 2) Immunoprecipitation: use Protein A/G PLUS-Agarose: sc-2003 (0.5 ml agarose/2.0 ml). 3) Immunofluorescence: use donkey anti-goat IgG-FITC: sc-2024 (dilution range: 1:100-1:400) or donkey anti-goat IgG-TR: sc-2783 (dilution range: 1:100-1:400) with UltraCruz™ Mounting Medium: sc-24941.

## DATA



ORMDL1/2/3 (E-15): sc-161143. Western blot analysis of ORMDL1 expression in non-transfected: sc-117752 (A) and mouse ORMDL1 transfected: sc-122257 (B) 293T whole cell lysates.

## RESEARCH USE

For research use only, not for use in diagnostic procedures.

## PROTOCOLS

See our web site at [www.scbt.com](http://www.scbt.com) or our catalog for detailed protocols and support products.