

PAT1 (N-13): sc-161150

BACKGROUND

The proton-coupled amino acid transporter family consists of four family members, namely PAT1, PAT2, PAT3 and PAT4, all of which mediate the 1:1 symport of protons and small neutral amino acids and derivatives across both intracellular and plasma membranes. Substrates for the PAT family members include L- and D-Proline, Glycine and L-Alanine, 3-Amino-1-propanesulfonic acid, L-Azetidine-2-carboxylic acid and *cis*-4-Hydroxy-D-proline. PAT1 expression is high in intestine and brain where it localizes to the brush border membrane, thereby allowing PAT1 to serve as a novel route for oral drug delivery. PAT2 shows high expression in spinal cord and brain, while PAT3 expression is found in testis. PAT4 is a multi-pass membrane protein that is expressed as two alternatively spliced isoforms. All four PAT family members contain three conserved histidine residues with His-55 found to be essential for catalytic activity of PAT1.

REFERENCES

1. Boll, M., et al. 2003. A cluster of proton/amino acid transporter genes in the human and mouse genomes. *Genomics* 82: 47-56.
2. Foltz, M., et al. 2004. Substrate specificity and transport mode of the proton-dependent amino acid transporter mPAT2. *Eur. J. Biochem.* 271: 3340-3347.
3. Rubio-Aliaga, I., et al. 2004. The proton/amino acid cotransporter PAT2 is expressed in neurons with a different subcellular localization than its paralog PAT1. *J. Biol. Chem.* 279: 2754-2760.
4. Boll, M., et al. 2004. The SLC36 family: proton-coupled transporters for the absorption of selected amino acids from extracellular and intracellular proteolysis. *Pflugers Arch.* 447: 776-779.
5. Metzner, L., et al. 2006. Substrate specificity of the amino acid transporter PAT1. *Amino Acids* 31: 111-117.
6. Metzner, L. and Brandsch, M. 2006. Influence of a proton gradient on the transport kinetics of the H⁺/amino acid cotransporter PAT1 in Caco-2 cells. *Eur. J. Pharm. Biopharm.* 63: 360-364.

CHROMOSOMAL LOCATION

Genetic locus: SLC36A1 (human) mapping to 5q33.1; Slc36a1 (mouse) mapping to 11 B1.3.

SOURCE

PAT1 (N-13) is an affinity purified goat polyclonal antibody raised against a peptide mapping at the N-terminus of PAT1 of human origin.

PRODUCT

Each vial contains 200 µg IgG in 1.0 ml of PBS with < 0.1% sodium azide and 0.1% gelatin.

Blocking peptide available for competition studies, sc-161150 P, (100 µg peptide in 0.5 ml PBS containing < 0.1% sodium azide and 0.2% BSA).

RESEARCH USE

For research use only, not for use in diagnostic procedures.

APPLICATIONS

PAT1 (N-13) is recommended for detection of PAT1 of mouse, rat and human origin by Western Blotting (starting dilution 1:200, dilution range 1:100-1:1000), immunoprecipitation [1-2 µg per 100-500 µg of total protein (1 ml of cell lysate)], immunofluorescence (starting dilution 1:50, dilution range 1:50-1:500), immunohistochemistry (including paraffin-embedded sections) (starting dilution 1:50, dilution range 1:50-1:500) and solid phase ELISA (starting dilution 1:30, dilution range 1:30-1:3000); non cross-reactive with other PAT family members.

PAT1 (N-13) is also recommended for detection of PAT1 in additional species, including equine, canine and porcine.

Suitable for use as control antibody for PAT1 siRNA (h): sc-92011, PAT1 siRNA (m): sc-152031, PAT1 shRNA Plasmid (h): sc-92011-SH, PAT1 shRNA Plasmid (m): sc-152031-SH, PAT1 shRNA (h) Lentiviral Particles: sc-92011-V and PAT1 shRNA (m) Lentiviral Particles: sc-152031-V.

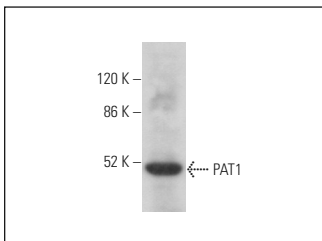
Molecular Weight of PAT1: 53 kDa.

Positive Control: mouse brain extract: sc-2253.

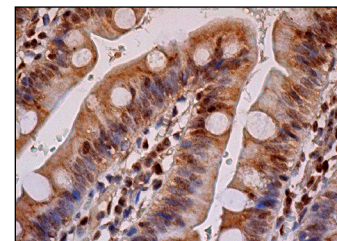
RECOMMENDED SECONDARY REAGENTS

To ensure optimal results, the following support (secondary) reagents are recommended: 1) Western Blotting: use donkey anti-goat IgG-HRP: sc-2020 (dilution range: 1:2000-1:100,000) or Cruz Marker™ compatible donkey anti-goat IgG-HRP: sc-2033 (dilution range: 1:2000-1:5000), Cruz Marker™ Molecular Weight Standards: sc-2035, TBS Blotto A Blocking Reagent: sc-2333 and Western Blotting Luminol Reagent: sc-2048. 2) Immunoprecipitation: use Protein A/G PLUS-Agarose: sc-2003 (0.5 ml agarose/2.0 ml). 3) Immunofluorescence: use donkey anti-goat IgG-FITC: sc-2024 (dilution range: 1:100-1:400) or donkey anti-goat IgG-TR: sc-2783 (dilution range: 1:100-1:400) with UltraCruz™ Mounting Medium: sc-24941. 4) Immunohistochemistry: use ImmunoCruz™: sc-2053 or ABC: sc-2023 goat IgG Staining Systems.

DATA



PAT1 (N-13): sc-161150. Western blot analysis of PAT1 expression in mouse brain tissue extract.



PAT1 (N-13): sc-161150. Immunoperoxidase staining of formalin fixed, paraffin-embedded human small intestine tissue showing cytoplasmic and nuclear staining of glandular cells.

STORAGE

Store at 4° C, **DO NOT FREEZE**. Stable for one year from the date of shipment. Non-hazardous. No MSDS required.