

PRR11 (C-12): sc-161167

BACKGROUND

Proline-rich proteins are often involved in protein-protein interactions and typically act as ligands for SH3, WW and EVH1 domains. PRR11 (proline rich 11) is a 360 amino acid protein that is encoded by a gene located on human chromosome 17. Human chromosome 17 comprises over 2.5% of the human genome and encodes over 1,200 genes. Two key tumor suppressor genes are associated with chromosome 17, namely, p53 and BRCA1. Tumor suppressor p53 is necessary for maintenance of cellular genetic integrity by moderating cell fate through DNA repair versus cell death. Malfunction or loss of p53 expression is associated with malignant cell growth and Li-Fraumeni syndrome. Like p53, BRCA1 is directly involved in DNA repair, though specifically it is recognized as a genetic determinant of early onset breast cancer and predisposition to cancers of the ovary, colon, prostate gland and fallopian tubes.

REFERENCES

1. Welsch, M.J., Kronic, A. and Medenica, M.M. 2005. Birt-Hogg-Dube syndrome. *Int. J. Dermatol.* 44: 668-673.
2. Nusbaum, R., Vogel, K.J. and Ready, K. 2006-2007. Susceptibility to breast cancer: hereditary syndromes and low penetrance genes. *Breast Dis.* 27: 21-50.
3. Al-Dirbashi, O.Y., Rashed, M.S., Al-Qahtani, K., Al-Mokhadab, M.A., Kurdi, W. and Al-Sayed, M.A. 2007. Quantification of N-acetylaspartic acid in urine by LC-MS/MS for the diagnosis of Canavan disease. *J. Inher. Metab. Dis.* 30: 612.
4. Dann, R.B., Kelley, J.L. and Zorn, K.K. 2007. Strategies for ovarian cancer prevention. *Obstet. Gynecol. Clin. North Am.* 34: 667-686.
5. Farrell, C.J. and Plotkin, S.R. 2007. Genetic causes of brain tumors: neurofibromatosis, tuberous sclerosis, von Hippel-Lindau, and other syndromes. *Neurol. Clin.* 25: 925-946.
6. Suela, J., Largo, C., Ferreira, B., Alvarez, S., Robledo, M., González-Neira, A., Calasanz, M.J. and Cigudosa, J.C. 2007. Neurofibromatosis 1, and not TP53, seems to be the main target of chromosome 17 deletions in *de novo* acute myeloid leukemia. *J. Clin. Oncol.* 25: 1151-1152.
7. Tai, Y.C., Domchek, S., Parmigiani, G. and Chen, S. 2007. Breast cancer risk among male BRCA1 and BRCA2 mutation carriers. *J. Natl. Cancer Inst.* 99: 1811-1814.
8. Yan, J., Jiang, J., Lim, C.A., Wu, Q., Ng, H.H. and Chin, K.C. 2007. Blimp-1 regulates cell growth through repression of p53 transcription. *Proc. Natl. Acad. Sci. USA* 104: 1841-1846.

CHROMOSOMAL LOCATION

Genetic locus: PRR11 (human) mapping to 17q22; Prr11 (mouse) mapping to 11 C.

SOURCE

PRR11 (C-12) is an affinity purified goat polyclonal antibody raised against a peptide mapping at the C-terminus of PRR11 of human origin.

PRODUCT

Each vial contains 200 µg IgG in 1.0 ml of PBS with < 0.1% sodium azide and 0.1% gelatin.

Blocking peptide available for competition studies, sc-161167 P, (100 µg peptide in 0.5 ml PBS containing < 0.1% sodium azide and 0.2% BSA).

APPLICATIONS

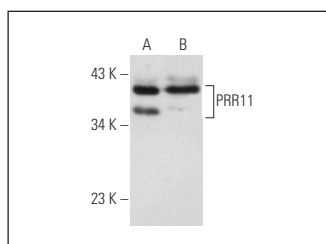
PRR11 (C-12) is recommended for detection of PRR11 of mouse, rat and human origin by Western Blotting (starting dilution 1:200, dilution range 1:100-1:1000), immunoprecipitation [1-2 µg per 100-500 µg of total protein (1 ml of cell lysate)], immunofluorescence (starting dilution 1:50, dilution range 1:50-1:500) and solid phase ELISA (starting dilution 1:30, dilution range 1:30-1:3000); non cross-reactive with other PRR family members.

Suitable for use as control antibody for PRR11 siRNA (h): sc-93637, PRR11 siRNA (m): sc-152505, PRR11 shRNA Plasmid (h): sc-93637-SH, PRR11 shRNA Plasmid (m): sc-152505-SH, PRR11 shRNA (h) Lentiviral Particles: sc-93637-V and PRR11 shRNA (m) Lentiviral Particles: sc-152505-V.

Molecular Weight of PRR11: 40 kDa.

Positive Controls: HeLa whole cell lysate: sc-2200 or PC-3 cell lysate: sc-2220.

DATA



PRR11 (C-12): sc-161167. Western blot analysis of PRR11 expression in HeLa (A) and PC-3 (B) whole cell lysates.

STORAGE

Store at 4° C, **DO NOT FREEZE**. Stable for one year from the date of shipment. Non-hazardous. No MSDS required.

RESEARCH USE

For research use only, not for use in diagnostic procedures.

PROTOCOLS

See our web site at www.scbt.com or our catalog for detailed protocols and support products.