

RhebL1 (C-14): sc-161185

BACKGROUND

RhebL1 (ras homolog enriched in brain-like protein 1), also known as Rheb2 or GTPase RhebL1, is a 183 amino acid protein that belongs to the small GTPase superfamily and Rheb family. Localizing to the cell membrane as well as the cytoplasm, RhebL1 is ubiquitously expressed and is increased two-fold in many tumor cell lines. RhebL1 exhibits GTPase activity and may activate NFκB-mediated gene transcription. Regulating the activity of Rictor, RhebL1 also promotes signal transduction. RhebL1 exists as two alternatively spliced isoforms and is encoded by a gene that maps to human chromosome 12q13.12 and mouse chromosome 15 F1. Human chromosome 12 encodes over 1,100 genes and comprises approximately 4.5% of the human genome. Chromosome 12 is associated with a variety of diseases and afflictions, including Hypochondrogenesis, achondrogenesis, Kniest dysplasia, Noonan syndrome and trisomy 12p, which causes facial developmental defects and seizure disorders.

REFERENCES

- Allen, T.L., et al. 1996. Cytogenetic and molecular analysis in trisomy 12p. *Am. J. Med. Genet.* 63: 250-256.
- Tabancay, A.P., et al. 2003. Identification of dominant negative mutants of Rheb GTPase and their use to implicate the involvement of human Rheb in the activation of p70S6K. *J. Biol. Chem.* 278: 39921-39930.
- Tee, A.R., et al. 2005. Analysis of mTOR signaling by the small G proteins, Rheb and RhebL1. *FEBS Lett.* 579: 4763-4768.
- Basso, A.D., et al. 2005. The farnesyl transferase inhibitor (FTI) SCH66336 (lonafarnib) inhibits Rheb farnesylation and mTOR signaling. Role in FTI enhancement of taxane and tamoxifen anti-tumor activity. *J. Biol. Chem.* 280: 31101-31108.
- Yuan, J., et al. 2005. Identification and characterization of RHEBL1, a novel member of Ras family, which activates transcriptional activities of NFκB. *Mol. Biol. Rep.* 32: 205-214.
- Robb, V.A., et al. 2007. Activation of the mTOR signaling pathway in renal clear cell carcinoma. *J. Urol.* 177: 346-352.

CHROMOSOMAL LOCATION

Genetic locus: RHEBL1 (human) mapping to 12q13.12; Rheb1 (mouse) mapping to 15 F1.

SOURCE

RhebL1 (C-14) is an affinity purified goat polyclonal antibody raised against a peptide mapping near the C-terminus of RhebL1 of human origin.

PRODUCT

Each vial contains 200 µg IgG in 1.0 ml of PBS with < 0.1% sodium azide and 0.1% gelatin.

Blocking peptide available for competition studies, sc-161185 P, (100 µg peptide in 0.5 ml PBS containing < 0.1% sodium azide and 0.2% BSA).

APPLICATIONS

RhebL1 (C-14) is recommended for detection of RhebL1 of mouse, rat and human origin by Western Blotting (starting dilution 1:200, dilution range 1:100-1:1000), immunoprecipitation [1-2 µg per 100-500 µg of total protein (1 ml of cell lysate)], immunofluorescence (starting dilution 1:50, dilution range 1:50-1:500) and solid phase ELISA (starting dilution 1:30, dilution range 1:30-1:3000).

RhebL1 (C-14) is also recommended for detection of RhebL1 in additional species, including equine, canine and bovine.

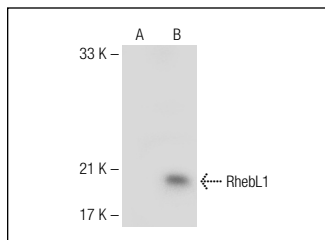
Suitable for use as control antibody for RhebL1 siRNA (h): sc-95811, RhebL1 siRNA (m): sc-152852, RhebL1 shRNA Plasmid (h): sc-95811-SH, RhebL1 shRNA Plasmid (m): sc-152852-SH, RhebL1 shRNA (h) Lentiviral Particles: sc-95811-V and RhebL1 shRNA (m) Lentiviral Particles: sc-152852-V.

Molecular Weight of RhebL1 isoform 1: 21 kDa.

Molecular Weight of RhebL1 isoform 2: 8 kDa.

Positive Controls: RhebL1 (h): 293T Lysate: sc-114548.

DATA



RhebL1 (C-14): sc-161185. Western blot analysis of RhebL1 expression in non-transfected: sc-117752 (A) and human RhebL1 transfected: sc-114548 (B) 293T whole cell lysates.

STORAGE

Store at 4° C, ****DO NOT FREEZE****. Stable for one year from the date of shipment. Non-hazardous. No MSDS required.

RESEARCH USE

For research use only, not for use in diagnostic procedures.

PROTOCOLS

See our web site at www.scbt.com or our catalog for detailed protocols and support products.


 MONOS
Satisfaction
Guaranteed

Try **RhebL1 (A-2): sc-515057** or **RhebL1 (F-5): sc-514095**, our highly recommended monoclonal alternatives to RhebL1 (C-14).