

C1orf25 (D-19): sc-161405

BACKGROUND

C1orf25, also known as TRM1L (TRMT1-like protein), MST070 or MSTP070, is a 733 amino acid protein that belongs to the TRM1 family of proteins. Expressed in a wide variety of tissues, C1orf25 contains one C₂H₂-type zinc finger and shares sequence similarity with TRMT1, a tRNA methyltransferase that dimethylates guanine at position 26 of tRNAs. As is suggested by observations of C1orf25-deficient mice, C1orf25 is believed to play a role in exploratory behavior and motor coordination. The gene encoding C1orf25 localizes to chromosome 1 and, due to alternative splicing events, C1orf25 exists as at least two isoforms.

REFERENCES

1. Watson, M.L., et al. 1990. Genomic organization of the selectin family of leukocyte adhesion molecules on human and mouse chromosome 1. *J. Exp. Med.* 172: 263-272.
2. Sood, R., et al. 2001. Cloning and characterization of 13 novel transcripts and the human RGS8 gene from the 1q25 region encompassing the hereditary prostate cancer (HPC1) locus. *Genomics* 73: 211-222.
3. Blackwood, D.H., et al. 2001. Schizophrenia and affective disorders— cosegregation with a translocation at chromosome 1q42 that directly disrupts brain-expressed genes: clinical and P300 findings in a family. *Am. J. Hum. Genet.* 69: 428-433
4. Online Mendelian Inheritance in Man, OMIM™. 2002. Johns Hopkins University, Baltimore, MD. MIM Number: 611673. World Wide Web URL: <http://www.ncbi.nlm.nih.gov/omim/>
5. Weise, A., et al. 2005. New insights into the evolution of chromosome 1. *Cytogenet. Genome Res.* 108: 217-222.
6. Gregory, S.G., et al. 2006. The DNA sequence and biological annotation of human chromosome 1. *Nature* 441: 315-321.
7. Hennah, W., et al. 2006. Genes and schizophrenia: beyond schizophrenia: the role of DISC1 in major mental illness. *Schizophr. Bull.* 32: 409-416.

CHROMOSOMAL LOCATION

Genetic locus: TRMT1L (human) mapping to 1q25.3; Trmt1l (mouse) mapping to 1 G2.

SOURCE

C1orf25 (D-19) is an affinity purified goat polyclonal antibody raised against a peptide mapping within an internal region of C1orf25 of human origin.

PRODUCT

Each vial contains 200 µg IgG in 1.0 ml of PBS with < 0.1% sodium azide and 0.1% gelatin.

Blocking peptide available for competition studies, sc-161405 P, (100 µg peptide in 0.5 ml PBS containing < 0.1% sodium azide and 0.2% BSA).

RESEARCH USE

For research use only, not for use in diagnostic procedures.

APPLICATIONS

C1orf25 (D-19) is recommended for detection of C1orf25 of mouse, rat and human origin by Western Blotting (starting dilution 1:200, dilution range 1:100-1:1000), immunoprecipitation [1-2 µg per 100-500 µg of total protein (1 ml of cell lysate)], immunofluorescence (starting dilution 1:50, dilution range 1:50-1:500) and solid phase ELISA (starting dilution 1:30, dilution range 1:30-1:3000); non cross-reactive with other C1orf family members.

C1orf25 (D-19) is also recommended for detection of C1orf25 in additional species, including equine, canine, bovine and porcine.

Suitable for use as control antibody for C1orf25 siRNA (h): sc-78759, C1orf25 siRNA (m): sc-141840, C1orf25 shRNA Plasmid (h): sc-78759-SH, C1orf25 shRNA Plasmid (m): sc-141840-SH, C1orf25 shRNA (h) Lentiviral Particles: sc-78759-V and C1orf25 shRNA (m) Lentiviral Particles: sc-141840-V.

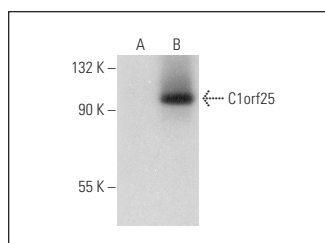
Molecular Weight of C1orf25: 82/44 kDa.

Positive Controls: C1orf25 (m): 293T Lysate: sc-118905.

RECOMMENDED SECONDARY REAGENTS

To ensure optimal results, the following support (secondary) reagents are recommended: 1) Western Blotting: use donkey anti-goat IgG-HRP: sc-2020 (dilution range: 1:2000-1:100,000) or Cruz Marker™ compatible donkey anti-goat IgG-HRP: sc-2033 (dilution range: 1:2000-1:5000), Cruz Marker™ Molecular Weight Standards: sc-2035, TBS Blotto A Blocking Reagent: sc-2333 and Western Blotting Luminol Reagent: sc-2048. 2) Immunoprecipitation: use Protein A/G PLUS-Agarose: sc-2003 (0.5 ml agarose/2.0 ml). 3) Immunofluorescence: use donkey anti-goat IgG-FITC: sc-2024 (dilution range: 1:100-1:400) or donkey anti-goat IgG-TR: sc-2783 (dilution range: 1:100-1:400) with UltraCruz™ Mounting Medium: sc-24941.

DATA



C1orf25 (D-19): sc-161405. Western blot analysis of C1orf25 expression in non-transfected: sc-117752 (A) and mouse C1orf25 transfected: sc-118905 (B) 293T whole cell lysates.

STORAGE

Store at 4° C, **DO NOT FREEZE**. Stable for one year from the date of shipment. Non-hazardous. No MSDS required.

PROTOCOLS

See our web site at www.scbt.com or our catalog for detailed protocols and support products.