

CC2D1B (G-14): sc-161436

BACKGROUND

CC2D1B is an 858 amino acid protein encoded by a gene mapping to human chromosome 1. Chromosome 1 is the largest human chromosome, spanning about 260 million base pairs and making up 8% of the human genome. There are about 3,000 genes on chromosome 1 and, considering the great number of genes, there are also a large number of diseases associated with chromosome 1. Notably, the rare aging disease Hutchinson-Gilford progeria is associated with the LMNA gene which encodes Lamin A. When defective, the LMNA gene product can build up in the nucleus and cause characteristic nuclear blebs. The mechanism of rapidly enhanced aging is unclear and is a topic of continuing exploration. The MUTYH gene is located on chromosome 1 and is partially responsible for familial adenomatous polyposis. Stickler syndrome, Parkinson's, Gaucher disease and Usher syndrome are also associated with chromosome 1. A breakpoint has been identified in 1q which disrupts the DISC1 gene and is linked to schizophrenia. Aberrations in chromosome 1 are found in a variety of cancers including head and neck cancer, malignant melanoma and multiple myeloma.

REFERENCES

1. Watson, M.L., et al. 1990. Genomic organization of the selectin family of leukocyte adhesion molecules on human and mouse chromosome 1. *J. Exp. Med.* 172: 263-272.
2. Blackwood, D.H., et al. 2001. Schizophrenia and affective disorders— cosegregation with a translocation at chromosome 1q42 that directly disrupts brain-expressed genes: clinical and P300 findings in a family. *Am. J. Hum. Genet.* 69: 428-433.
3. Weise, A., et al. 2005. New insights into the evolution of chromosome 1. *Cytogenet. Genome Res.* 108: 217-222.
4. Lans, H. and Hoeijmakers, J.H. 2006. Cell biology: aging nucleus gets out of shape. *Nature* 440: 32-34.
5. Gregory, S.G., et al. 2006. The DNA sequence and biological annotation of human chromosome 1. *Nature* 441: 315-321.
6. Hennah, W., et al. 2006. Genes and schizophrenia: beyond schizophrenia: the role of DISC1 in major mental illness. *Schizophr. Bull.* 32: 409-416.
7. Scaffidi, P. and Misteli, T. 2006. Lamin A-dependent nuclear defects in human aging. *Science* 312: 1059-1063.

CHROMOSOMAL LOCATION

Genetic locus: CC2D1B (human) mapping to 1p32.3; Cc2d1b (mouse) mapping to 4 C7.

SOURCE

CC2D1B (G-14) is an affinity purified goat polyclonal antibody raised against a peptide mapping within an internal region of CC2D1B of human origin.

STORAGE

Store at 4° C, ****DO NOT FREEZE****. Stable for one year from the date of shipment. Non-hazardous. No MSDS required.

PRODUCT

Each vial contains 200 µg IgG in 1.0 ml of PBS with < 0.1% sodium azide and 0.1% gelatin.

Blocking peptide available for competition studies, sc-161436 P, (100 µg peptide in 0.5 ml PBS containing < 0.1% sodium azide and 0.2% BSA).

APPLICATIONS

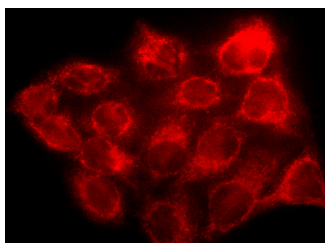
CC2D1B (G-14) is recommended for detection of CC2D1B of mouse, rat and human origin by Western Blotting (starting dilution 1:200, dilution range 1:100-1:1000), immunofluorescence (starting dilution 1:50, dilution range 1:50-1:500) and solid phase ELISA (starting dilution 1:30, dilution range 1:30-1:3000).

Suitable for use as control antibody for CC2D1B siRNA (h): sc-78613, CC2D1B siRNA (m): sc-142039, CC2D1B shRNA Plasmid (h): sc-78613-SH, CC2D1B shRNA Plasmid (m): sc-142039-SH, CC2D1B shRNA (h) Lentiviral Particles: sc-78613-V and CC2D1B shRNA (m) Lentiviral Particles: sc-142039-V.

RECOMMENDED SECONDARY REAGENTS

To ensure optimal results, the following support (secondary) reagents are recommended: 1) Western Blotting: use donkey anti-goat IgG-HRP: sc-2020 (dilution range: 1:2000-1:100,000) or Cruz Marker™ compatible donkey anti-goat IgG-HRP: sc-2033 (dilution range: 1:2000-1:5000), Cruz Marker™ Molecular Weight Standards: sc-2035, TBS Blotto A Blocking Reagent: sc-2333 and Western Blotting Luminol Reagent: sc-2048. 2) Immunofluorescence: use donkey anti-goat IgG-FITC: sc-2024 (dilution range: 1:100-1:400) or donkey anti-goat IgG-TR: sc-2783 (dilution range: 1:100-1:400) with UltraCruz™ Mounting Medium: sc-24941.

DATA



CC2D1B (G-14): sc-161436. Immunofluorescence staining of methanol-fixed HeLa cells showing cytoplasmic localization.

RESEARCH USE

For research use only, not for use in diagnostic procedures.

MONOS
Satisfaction
Guaranteed

Try **CC2D1B (E-12): sc-271761** or **CC2D1B (F-5): sc-271760**, our highly recommended monoclonal alternatives to CC2D1B (G-14).