

CCT B (E-13): sc-161447

BACKGROUND

CTP:phosphocholine cytidyltransferase (CCT) is a key enzyme that regulates the biosynthesis of phosphatidylcholine, a major component of biological membranes. CCT B (choline-phosphate cytidyltransferase B), also known as Phosphorylcholine transferase B, is a 369 amino acid cytoplasmic protein that, along with CCT A, controls phosphatidylcholine synthesis in mammals. Highly expressed in placenta, brain, testis and ovary, CCT B is extensively phosphorylated during its post-translational modification. Knockdown of CCT B mRNA results in gonadal dysfunction in mice. CCT B utilizes CTP and choline phosphate to make diphosphate and CDP-choline, a reaction that is dependent upon the presence of stimulatory lipids. There are three isoforms of CCT B that are produced as a result of alternative splicing events.

REFERENCES

- Kent, C. 1997. CTP:phosphocholine cytidyltransferase. *Biochim. Biophys. Acta* 1348: 79-90.
- Lykidis, A., Murti, K.G. and Jackowski, S. 1998. Cloning and characterization of a second human CTP:phosphocholine cytidyltransferase. *J. Biol. Chem.* 273: 14022-14029.
- Clement, J.M. and Kent, C. 1999. CTP:phosphocholine cytidyltransferase: insights into regulatory mechanisms and novel functions. *Biochem. Biophys. Res. Commun.* 257: 643-650.
- Lykidis, A., Baburina, I. and Jackowski, S. 1999. Distribution of CTP:phosphocholine cytidyltransferase (CCT) isoforms. Identification of a new CCT β splice variant. *J. Biol. Chem.* 274: 26992-27001.
- Cornell, R.B. and Northwood, I.C. 2000. Regulation of CTP:phosphocholine cytidyltransferase by amphitropism and relocalization. *Trends Biochem. Sci.* 25: 441-447.
- Online Mendelian Inheritance in Man, OMIM™. 2000. Johns Hopkins University, Baltimore, MD. MIM Number: 604926. World Wide Web URL: <http://www.ncbi.nlm.nih.gov/omim/>
- Karim, M., Jackson, P. and Jackowski, S. 2003. Gene structure, expression and identification of a new CTP:phosphocholine cytidyltransferase β isoform. *Biochim. Biophys. Acta* 1633: 1-12.
- Marcucci, H., Elena, C., Gilardoni, P. and Banchio, C. 2008. Characterization of the murine CTP:phosphocholine cytidyltransferase β gene promoter. *Biochim. Biophys. Acta* 1781: 254-262.
- Lee, J., Johnson, J., Ding, Z., Paetzel, M. and Cornell, R.B. 2009. Crystal structure of a mammalian CTP:phosphocholine cytidyltransferase catalytic domain reveals novel active site residues within a highly conserved nucleotidyltransferase fold. *J. Biol. Chem.* 284: 33535-33548.

CHROMOSOMAL LOCATION

Genetic locus: PCYT1B (human) mapping to Xp22.11; Pcyt1b (mouse) mapping to X C3.

SOURCE

CCT B (E-13) is an affinity purified goat polyclonal antibody raised against a peptide mapping within an internal region of CCT B of human origin.

PRODUCT

Each vial contains 200 μ g IgG in 1.0 ml of PBS with < 0.1% sodium azide and 0.1% gelatin.

Blocking peptide available for competition studies, sc-161447 P, (100 μ g peptide in 0.5 ml PBS containing < 0.1% sodium azide and 0.2% BSA).

APPLICATIONS

CCT B (E-13) is recommended for detection of CCT B of mouse, rat and human origin by Western Blotting (starting dilution 1:200, dilution range 1:100-1:1000), immunoprecipitation [1-2 μ g per 100-500 μ g of total protein (1 ml of cell lysate)], immunofluorescence (starting dilution 1:50, dilution range 1:50-1:500) and solid phase ELISA (starting dilution 1:30, dilution range 1:30-1:3000); non cross-reactive with CCT A.

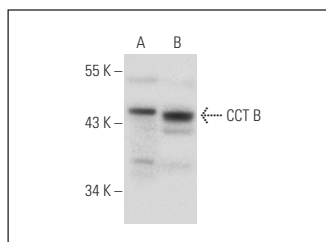
CCT B (E-13) is also recommended for detection of CCT B in additional species, including equine, canine, bovine, porcine and avian.

Suitable for use as control antibody for CCT B siRNA (h): sc-91132, CCT B siRNA (m): sc-142176, CCT B shRNA Plasmid (h): sc-91132-SH, CCT B shRNA Plasmid (m): sc-142176-SH, CCT B shRNA (h) Lentiviral Particles: sc-91132-V and CCT B shRNA (m) Lentiviral Particles: sc-142176-V.

Molecular Weight of CCT B: 35/42 kDa.

Positive Controls: PC-3 cell lysate: sc-2220 or SK-BR-3 cell lysate: sc-2218.

DATA



CCT B (E-13): sc-161447. Western blot analysis of CCT B expression in PC-3 (A) and SK-BR-3 (B) whole cell lysates.

STORAGE

Store at 4° C, ****DO NOT FREEZE****. Stable for one year from the date of shipment. Non-hazardous. No MSDS required.

RESEARCH USE

For research use only, not for use in diagnostic procedures.

PROTOCOLS

See our web site at www.scbt.com or our catalog for detailed protocols and support products.