

HYLS1 (E-14): sc-161719

BACKGROUND

The hydrolethalus syndrome protein 1 (HYLS1) is a widely conserved protein that plays an essential role in cilia formation. A single amino acid mutation in the HYLS1 gene leads to a perinatal lethal disorder termed hydrolethalus syndrome, a severe fetal malformation syndrome characterized by central nervous system (CNS) malformation such as hydrocephaly and absent midline structures of the brain, micrognathia, defective lobation of the lungs and polydactyly. The gene encoding HYLS1 maps to human chromosome 11, which makes up around 4% of human genomic DNA and is considered a gene and disease association dense chromosome. The chromosome 11 encoded Atm gene is important for regulation of cell cycle arrest and apoptosis following double strand DNA breaks. Atm mutation leads to the disorder known as ataxia-telangiectasia.

REFERENCES

- Grossfeld, P.D., et al. 2004. The 11q terminal deletion disorder: a prospective study of 110 cases. *Am. J. Med. Genet. A* 129A: 51-61.
- Mee, L., et al. 2005. Hydrolethalus syndrome is caused by a missense mutation in a novel gene HYLS1. *Hum. Mol. Genet.* 14: 1475-1488.
- Taylor, T.D., et al. 2006. Human chromosome 11 DNA sequence and analysis including novel gene identification. *Nature* 440: 497-500.
- Lee, S.P., et al. 2007. Phase I study of eptifibatid in patients with sickle cell anaemia. *Br. J. Haematol.* 139: 612-620.
- Lee, J.H. and Paull, T.T. 2007. Activation and regulation of Atm kinase activity in response to DNA double-strand breaks. *Oncogene* 26: 7741-7748.
- Paetau, A., et al. 2008. Hydrolethalus syndrome: neuropathology of 21 cases confirmed by HYLS1 gene mutation analysis. *J. Neuropathol. Exp. Neurol.* 67: 750-762.
- Kaste, S.C., et al. 2008. Wilms tumour: prognostic factors, staging, therapy and late effects. *Pediatr. Radiol.* 38: 2-17.
- Dammermann, A., et al. 2009. The hydrolethalus syndrome protein HYLS1 links core centriole structure to cilia formation. *Genes Dev.* 23: 2046-2059.
- Honkala, H., et al. 2009. Unraveling the disease pathogenesis behind lethal hydrolethalus syndrome revealed multiple changes in molecular and cellular level. *Pathogenetics* 2: 2.

CHROMOSOMAL LOCATION

Genetic locus: HYLS1 (human) mapping to 11q24.2; Hyls1 (mouse) mapping to 9 A4.

SOURCE

HYLS1 (E-14) is an affinity purified goat polyclonal antibody raised against a peptide mapping within an internal region of HYLS1 of human origin.

STORAGE

Store at 4° C, ****DO NOT FREEZE****. Stable for one year from the date of shipment. Non-hazardous. No MSDS required.

PRODUCT

Each vial contains 200 µg IgG in 1.0 ml of PBS with < 0.1% sodium azide and 0.1% gelatin.

Blocking peptide available for competition studies, sc-161719 P, (100 µg peptide in 0.5 ml PBS containing < 0.1% sodium azide and 0.2% BSA).

APPLICATIONS

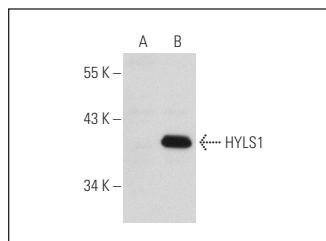
HYLS1 (E-14) is recommended for detection of HYLS1 of mouse, rat and human origin by Western Blotting (starting dilution 1:200, dilution range 1:100-1:1000), immunoprecipitation [1-2 µg per 100-500 µg of total protein (1 ml of cell lysate)], immunofluorescence (starting dilution 1:50, dilution range 1:50-1:500) and solid phase ELISA (starting dilution 1:30, dilution range 1:30-1:3000).

Suitable for use as control antibody for HYLS1 siRNA (h): sc-96710, HYLS1 shRNA Plasmid (h): sc-96710-SH and HYLS1 shRNA (h) Lentiviral Particles: sc-96710-V.

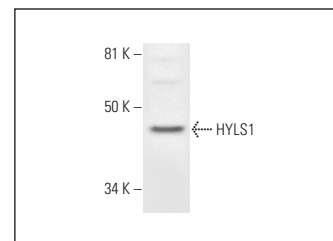
Molecular Weight of HYLS1: 40 kDa.

Positive Controls: HYLS1 (h): 293 Lysate: sc-111891 or LADMAC whole cell lysate: sc-364189.

DATA



HYLS1 (E-14): sc-161719. Western blot analysis of HYLS1 expression in non-transfected: sc-110760 (A) and human HYLS1 transfected: sc-111891 (B) 293 whole cell lysates.



HYLS1 (E-14): sc-161719. Western blot analysis of HYLS1 expression in LADMAC whole cell lysate.

RESEARCH USE

For research use only, not for use in diagnostic procedures.

PROTOCOLS

See our web site at www.scbt.com or our catalog for detailed protocols and support products.

MONOS
Satisfaction
Guaranteed

Try **HYLS1 (F-12): sc-393492** or **HYLS1 (D-9): sc-376721**, our highly recommended monoclonal alternatives to HYLS1 (E-14).