

Muskelin (T-14): sc-161889

BACKGROUND

Muskelin, also designated MKLN1 or TWA2, is a 735 amino acid nuclear and cytoplasmic protein that mediates cytoskeletal responses and cell spreading to Thrombospondin 1, an extracellular matrix glycoprotein. Forming a CTLH complex with RMND5A, Ran BP-M and TWA1, Muskelin exists as two alternatively spliced isoforms. Muskelin is implicated as an isoform-specific anchoring protein for the prostaglandin EP3 receptor, and contains one LisH domain, a CTLH domain, six kelch repeats and an N-terminal discoidin-like domain through which it self-associates via a head-to-tail mechanism. Human and mouse Muskelin share 98% amino acid sequence homology and are encoded by genes located on chromosomes 7q32.3 and 6 A3.3, respectively.

CHROMOSOMAL LOCATION

Genetic locus: MKLN1 (human) mapping to 7q32.3; Mkl1 (mouse) mapping to 6 A3.3.

SOURCE

Muskelin (T-14) is an affinity purified goat polyclonal antibody raised against a peptide mapping near the C-terminus of Muskelin of human origin.

PRODUCT-

Each vial contains 200 µg IgG in 1.0 ml of PBS with < 0.1% sodium azide and 0.1% gelatin.

Blocking peptide available for competition studies, sc-161889 P, (100 µg peptide in 0.5 ml PBS containing < 0.1% sodium azide and 0.2% BSA).

STORAGE

Store at 4° C, ****DO NOT FREEZE****. Stable for one year from the date of shipment. Non-hazardous. No MSDS required.

APPLICATIONS

Muskelin (T-14) is recommended for detection of Muskelin of mouse, rat and human origin by Western Blotting (starting dilution 1:200, dilution range 1:100-1:1000), immunoprecipitation [1-2 µg per 100-500 µg of total protein (1 ml of cell lysate)], immunofluorescence (starting dilution 1:50, dilution range 1:50-1:500) and solid phase ELISA (starting dilution 1:30, dilution range 1:30-1:3000).

Muskelin (T-14) is also recommended for detection of Muskelin in additional species, including equine, bovine, porcine and avian.

Suitable for use as control antibody for Muskelin siRNA (h): sc-89673, Muskelin siRNA (m): sc-149721, Muskelin shRNA Plasmid (h): sc-89673-SH, Muskelin shRNA Plasmid (m): sc-149721-SH, Muskelin shRNA (h) Lentiviral Particles: sc-89673-V and Muskelin shRNA (m) Lentiviral Particles: sc-149721-V.

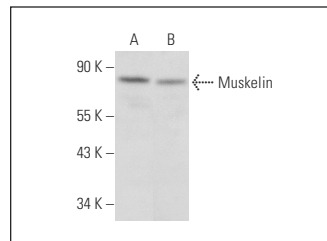
Molecular Weight of Muskelin: 82 kDa.

Positive Controls: Hep G2 cell lysate: sc-2227 or NCI-H460 whole cell lysate: sc-364235.

RECOMMENDED SECONDARY REAGENTS

To ensure optimal results, the following support (secondary) reagents are recommended: 1) Western Blotting: use donkey anti-goat IgG-HRP: sc-2020 (dilution range: 1:2000-1:100,000) or Cruz Marker™ compatible donkey anti-goat IgG-HRP: sc-2033 (dilution range: 1:2000-1:5000), Cruz Marker™ Molecular Weight Standards: sc-2035, TBS Blotto A Blocking Reagent: sc-2333 and Western Blotting Luminol Reagent: sc-2048. 2) Immunoprecipitation: use Protein A/G PLUS-Agarose: sc-2003 (0.5 ml agarose/2.0 ml). 3) Immunofluorescence: use donkey anti-goat IgG-FITC: sc-2024 (dilution range: 1:100-1:400) or donkey anti-goat IgG-TR: sc-2783 (dilution range: 1:100-1:400) with UltraCruz™ Mounting Medium: sc-24941.

DATA



Muskelin (T-14): sc-161889. Western blot analysis of Muskelin expression in NCI-H460 (A) and Hep G2 (B) whole cell lysates.

RESEARCH USE

For research use only, not for use in diagnostic procedures.

PROTOCOLS

See our web site at www.scbt.com or our catalog for detailed protocols and support products.


 MONOS
Satisfaction
Guaranteed

Try **Muskelin (C-12): sc-398956**, our highly recommended monoclonal alternative to Muskelin (T-14).