

NPWBP (N-12): sc-161959

BACKGROUND

NPWBP (Npw38-binding protein), also known as WW domain-binding protein 11 and SH3 domain-binding protein SNP70, is a 641 amino acid protein that contains 2 proline-rich regions that bind to the WW domain of PQBP-1, a transcription repressor that associates with polyglutamine tract-containing transcription regulators. Highly expressed in kidney, pancreas, brain, placenta, heart and skeletal muscle, NPWBP is predominantly located within the nucleus with granular heterogeneous distribution. However, during mitosis NPWBP is distributed in the cytoplasm. In the nucleus, NPWBP co-localizes with two mRNA splicing factors, SC35 and U2 snRNP B, which suggests that it plays a role in pre-mRNA processing.

REFERENCES

1. Komuro, A., Saeki, M. and Kato, S. 1999. Association of two nuclear proteins, Npw38 and NPWBP, via the interaction between the WW domain and a novel proline-rich motif containing glycine and arginine. *J. Biol. Chem.* 274: 36513-36519.
2. Komuro, A., Saeki, M. and Kato, S. 1999. Npw38, a novel nuclear protein possessing a WW domain capable of activating basal transcription. *Nucleic Acids Res.* 27: 1957-1965.
3. Sudol, M., Sliwa, K. and Russo, T. 2001. Functions of WW domains in the nucleus. *FEBS Lett.* 490: 190-195.
4. Craggs, G., Finan, P.M., Lawson, D., Wingfield, J., Perera, T., Gadher, S., Totty, N.F. and Kellie, S. 2001. A nuclear SH3 domain-binding protein that colocalizes with mRNA splicing factors and intermediate filament-containing perinuclear networks. *J. Biol. Chem.* 276: 30552-30560.
5. Macias, M.J., Wiesner, S. and Sudol, M. 2002. WW and SH3 domains, two different scaffolds to recognize proline-rich ligands. *FEBS Lett.* 513: 30-37.
6. Kofler, M., Motzny, K., Beyermann, M. and Freund, C. 2005. Novel interaction partners of the CD2BP2-GYF domain. *J. Biol. Chem.* 280: 33397-33402.
7. Huang, X., Beullens, M., Zhang, J., Zhou, Y., Nicolaescu, E., Lesage, B., Hu, Q., Wu, J., Bollen, M. and Shi, Y. 2009. Structure and function of the two tandem WW domains of the pre-mRNA splicing factor FBP21 (formin-binding protein 21). *J. Biol. Chem.* 284: 25375-25387.

CHROMOSOMAL LOCATION

Genetic locus: WBP11 (human) mapping to 12p12.3; Wbp11 (mouse) mapping to 6 G1.

SOURCE

NPWBP (N-12) is an affinity purified goat polyclonal antibody raised against a peptide mapping near the N-terminus of NPWBP of human origin.

STORAGE

Store at 4° C, ****DO NOT FREEZE****. Stable for one year from the date of shipment. Non-hazardous. No MSDS required.

PRODUCT

Each vial contains 200 µg IgG in 1.0 ml of PBS with < 0.1% sodium azide and 0.1% gelatin.

Blocking peptide available for competition studies, sc-161959 P, (100 µg peptide in 0.5 ml PBS containing < 0.1% sodium azide and 0.2% BSA).

APPLICATIONS

NPWBP (N-12) is recommended for detection of NPWBP of mouse, rat and human origin by Western Blotting (starting dilution 1:200, dilution range 1:100-1:1000), immunoprecipitation [1-2 µg per 100-500 µg of total protein (1 ml of cell lysate)], immunofluorescence (starting dilution 1:50, dilution range 1:50-1:500) and solid phase ELISA (starting dilution 1:30, dilution range 1:30-1:3000).

Suitable for use as control antibody for NPWBP siRNA (h): sc-95727, NPWBP siRNA (m): sc-150059, NPWBP shRNA Plasmid (h): sc-95727-SH, NPWBP shRNA Plasmid (m): sc-150059-SH, NPWBP shRNA (h) Lentiviral Particles: sc-95727-V and NPWBP shRNA (m) Lentiviral Particles: sc-150059-V.

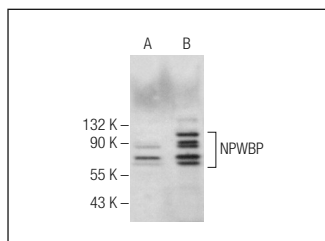
Molecular Weight of NPWBP: 70 kDa.

Positive Controls: NPWBP (m): 293T Lysate: sc-122117.

RECOMMENDED SECONDARY REAGENTS

To ensure optimal results, the following support (secondary) reagents are recommended: 1) Western Blotting: use donkey anti-goat IgG-HRP: sc-2020 (dilution range: 1:2000-1:100,000) or Cruz Marker™ compatible donkey anti-goat IgG-HRP: sc-2033 (dilution range: 1:2000-1:5000), Cruz Marker™ Molecular Weight Standards: sc-2035, TBS Blotto A Blocking Reagent: sc-2333 and Western Blotting Luminol Reagent: sc-2048. 2) Immunoprecipitation: use Protein A/G PLUS-Agarose: sc-2003 (0.5 ml agarose/2.0 ml). 3) Immunofluorescence: use donkey anti-goat IgG-FITC: sc-2024 (dilution range: 1:100-1:400) or donkey anti-goat IgG-TR: sc-2783 (dilution range: 1:100-1:400) with UltraCruz™ Mounting Medium: sc-24941.

DATA



NPWBP (N-12): sc-161959. Western blot analysis of NPWBP expression in non-transfected: sc-117752 (A) and mouse NPWBP transfected: sc-122117 (B) 293T whole cell lysates.

RESEARCH USE

For research use only, not for use in diagnostic procedures.