

SCYL1 (S-15): sc-162157

BACKGROUND

SCYL1 (SCY1-like protein 1), also known as NTKL (N-terminal kinase-like protein), CVAK90 (coated vesicle-associated kinase of 90 kDa), GKLP, TAPK, TEIF or TRAP (telomerase regulation-associated protein), is an 808 amino acid protein that belongs to the protein kinase superfamily. SCYL1 contains three heat domains and one protein kinase domain, which is thought to be catalytically inactive. SCYL1 regulates COPI-mediated traffic and interacts with COPA, COPB1, COPB2, AP2B1 and GORAB. SCYL1 undergoes alternative splicing events to produce six isoforms. Isoform 6 localizes to the nucleus where it acts as a transcriptional activator and binds three GC-rich sites (box A, B and C) in the region of the β -polymerase and TERT promoter. Isoforms 1, 2 and 3 are known to localize to the cytoplasm. The gene encoding SCYL1 maps to human chromosome 11.

REFERENCES

1. Van Asseldonk, M., et al. 2000. Construction of a 350-kb sequence-ready 11q13 cosmid contig encompassing the markers D11S4933 and D11S546: mapping of 11 genes and 3 tumor-associated translocation breakpoints. *Genomics* 66: 35-42.
2. Kato, M., et al. 2002. Identification and characterization of the human protein kinase-like gene NTKL: mitosis-specific centrosomal localization of an alternatively spliced isoform. *Genomics* 79: 760-767.
3. Tang, Z., et al. 2004. Molecular cloning and characterization of a human gene involved in transcriptional regulation of hTERT. *Biochem. Biophys. Res. Commun.* 324: 1324-1332.
4. Zhao, Y., et al. 2005. Transcriptional upregulation of DNA polymerase β by TEIF. *Biochem. Biophys. Res. Commun.* 333: 908-916.
5. Olsen, J.V., et al. 2006. Global, *in vivo*, and site-specific phosphorylation dynamics in signaling networks. *Cell* 127: 635-648.
6. Schmid, E.M., et al. 2006. Role of the AP2 β -appendage hub in recruiting partners for clathrin-coated vesicle assembly. *PLoS Biol.* 4: e262.

CHROMOSOMAL LOCATION

Genetic locus: SCYL1 (human) mapping to 11q13.1; Scyl1 (mouse) mapping to 19 A.

SOURCE

SCYL1 (S-15) is an affinity purified goat polyclonal antibody raised against a peptide mapping within an internal region of SCYL1 of human origin.

PRODUCT

Each vial contains 200 μ g IgG in 1.0 ml of PBS with < 0.1% sodium azide and 0.1% gelatin.

Blocking peptide available for competition studies, sc-162157 P, (100 μ g peptide in 0.5 ml PBS containing < 0.1% sodium azide and 0.2% BSA).

STORAGE

Store at 4° C, ****DO NOT FREEZE****. Stable for one year from the date of shipment. Non-hazardous. No MSDS required.

APPLICATIONS

SCYL1 (S-15) is recommended for detection of SCYL1 of mouse, rat and human origin by Western Blotting (starting dilution 1:200, dilution range 1:100-1:1000), immunoprecipitation [1-2 μ g per 100-500 μ g of total protein (1 ml of cell lysate)], immunofluorescence (starting dilution 1:50, dilution range 1:50-1:500) and solid phase ELISA (starting dilution 1:30, dilution range 1:30-1:3000); non cross-reactive with SCYL2 or SCYL3.

SCYL1 (S-15) is also recommended for detection of SCYL1 in additional species, including equine, canine, bovine and porcine.

Suitable for use as control antibody for SCYL1 siRNA (h): sc-96792, SCYL1 siRNA (m): sc-153277, SCYL1 shRNA Plasmid (h): sc-96792-SH, SCYL1 shRNA Plasmid (m): sc-153277-SH, SCYL1 shRNA (h) Lentiviral Particles: sc-96792-V and SCYL1 shRNA (m) Lentiviral Particles: sc-153277-V.

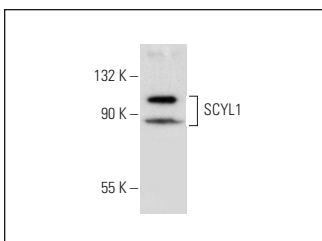
Molecular Weight of SCYL1 isoforms: 90/88/79/86/69 kDa.

Positive Controls: Y79 cell lysate: sc-2240.

RECOMMENDED SECONDARY REAGENTS

To ensure optimal results, the following support (secondary) reagents are recommended: 1) Western Blotting: use donkey anti-goat IgG-HRP: sc-2020 (dilution range: 1:2000-1:100,000) or Cruz Marker™ compatible donkey anti-goat IgG-HRP: sc-2033 (dilution range: 1:2000-1:5000), Cruz Marker™ Molecular Weight Standards: sc-2035, TBS Blotto A Blocking Reagent: sc-2333 and Western Blotting Luminol Reagent: sc-2048. 2) Immunoprecipitation: use Protein A/G PLUS-Agarose: sc-2003 (0.5 ml agarose/2.0 ml). 3) Immunofluorescence: use donkey anti-goat IgG-FITC: sc-2024 (dilution range: 1:100-1:400) or donkey anti-goat IgG-TR: sc-2783 (dilution range: 1:100-1:400) with UltraCruz™ Mounting Medium: sc-24941.

DATA



SCYL1 (S-15): sc-162157. Western blot analysis of SCYL1 expression in Y79 whole cell lysate.

RESEARCH USE

For research use only, not for use in diagnostic procedures.

MONOS
Satisfaction
Guaranteed

Try **SCYL1 (KA.72): sc-130466**, our highly recommended monoclonal alternative to SCYL1 (S-15).