

SH3BGRL (C-12): sc-162185

BACKGROUND

SH3BGRL (SH3 domain binding glutamic acid-rich protein like), also known as SH3BGR, is a 114 amino acid protein that is ubiquitously expressed and is encoded by a gene which maps to the X chromosome of both human and mouse. Chromosome X, one of the two human sex chromosomes, contains nearly 153 million base pairs and encodes over 1,000 genes. In conjunction with chromosome Y, chromosome X is responsible for sex determination, as an X and a Y chromosome lead to normal male development, while two copies of an X chromosome lead to normal female development. There are a number of conditions related to an abnormal number and combination of sex chromosomes, some of which include Turner's syndrome, color blindness, hemophilia and Duchenne muscular dystrophy.

CHROMOSOMAL LOCATION

Genetic locus: SH3BGRL (human) mapping to Xq21.1; Sh3bgrl (mouse) mapping to X D.

SOURCE

SH3BGRL (C-12) is an affinity purified goat polyclonal antibody raised against a peptide mapping near the C-terminus of SH3BGRL of human origin.

PRODUCT

Each vial contains 200 µg IgG in 1.0 ml of PBS with < 0.1% sodium azide and 0.1% gelatin.

Blocking peptide available for competition studies, sc-162185 P, (100 µg peptide in 0.5 ml PBS containing < 0.1% sodium azide and 0.2% BSA).

STORAGE

Store at 4° C, ****DO NOT FREEZE****. Stable for one year from the date of shipment. Non-hazardous. No MSDS required.

APPLICATIONS

SH3BGRL (C-12) is recommended for detection of SH3BGRL of mouse, rat and human origin by Western Blotting (starting dilution 1:200, dilution range 1:100-1:1000), immunoprecipitation [1-2 µg per 100-500 µg of total protein (1 ml of cell lysate)], immunofluorescence (starting dilution 1:50, dilution range 1:50-1:500) and solid phase ELISA (starting dilution 1:30, dilution range 1:30-1:3000); non cross-reactive with SH3BGRL2 or SH3BGRL3.

SH3BGRL (C-12) is also recommended for detection of SH3BGRL in additional species, including equine, bovine, porcine and avian.

Suitable for use as control antibody for SH3BGRL siRNA (h): sc-91244, SH3BGRL siRNA (m): sc-153433, SH3BGRL shRNA Plasmid (h): sc-91244-SH, SH3BGRL shRNA Plasmid (m): sc-153433-SH, SH3BGRL shRNA (h) Lentiviral Particles: sc-91244-V and SH3BGRL shRNA (m) Lentiviral Particles: sc-153433-V.

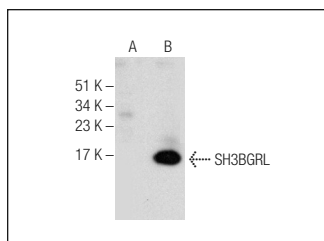
Molecular Weight of SH3BGRL: 13 kDa.

Positive Controls: SH3BGRL (m): 293T Lysate: sc-123531.

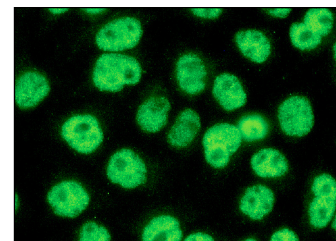
RECOMMENDED SECONDARY REAGENTS

To ensure optimal results, the following support (secondary) reagents are recommended: 1) Western Blotting: use donkey anti-goat IgG-HRP: sc-2020 (dilution range: 1:2000-1:100,000) or Cruz Marker™ compatible donkey anti-goat IgG-HRP: sc-2033 (dilution range: 1:2000-1:5000), Cruz Marker™ Molecular Weight Standards: sc-2035, TBS Blotto A Blocking Reagent: sc-2333 and Western Blotting Luminol Reagent: sc-2048. 2) Immunoprecipitation: use Protein A/G PLUS-Agarose: sc-2003 (0.5 ml agarose/2.0 ml). 3) Immunofluorescence: use donkey anti-goat IgG-FITC: sc-2024 (dilution range: 1:100-1:400) or donkey anti-goat IgG-TR: sc-2783 (dilution range: 1:100-1:400) with UltraCruz™ Mounting Medium: sc-24941.

DATA



SH3BGRL (C-12): sc-162185. Western blot analysis of SH3BGRL expression in non-transfected: sc-117752 (A) and mouse SH3BGRL transfected: sc-123531 (B) 293T whole cell lysates.



SH3BGRL (C-12): sc-162185. Immunofluorescence staining of methanol-fixed HeLa cells showing nuclear staining.

RESEARCH USE

For research use only, not for use in diagnostic procedures.

PROTOCOLS

See our web site at www.scbt.com or our catalog for detailed protocols and support products.



Try **SH3BGRL (E-5): sc-377108**, our highly recommended monoclonal alternative to SH3BGRL (C-12).