

UBE3B (G-14): sc-162368

BACKGROUND

E3 ubiquitin ligases are a large family of proteins that are engaged in the regulation of the turnover and activity of many target proteins and are classified into three major structurally distinct types: N-end rule E3s, E3s containing the HECT (homology to E6AP C-terminus) domain and E3s with RING fingers. UBE3B (ubiquitin protein ligase E3B) is a 1,068 amino acid widely expressed protein containing one HECT (E6AP-type E3 ubiquitin-protein ligase) domain and an IQ domain. UBE3B is a E3 ubiquitin-protein ligase that accepts ubiquitin from an E2 ubiquitin-conjugating enzyme in the form of a thioester, and then directly transfers the ubiquitin to targeted substrates. UBE3B exists as three alternatively spliced isoforms and is encoded by a gene located in human chromosome 12, which encodes over 1,100 genes and comprises approximately 4.5% of the human genome.

REFERENCES

1. Lomax, M.I., et al. 2000. Differential display and gene arrays to examine auditory plasticity. *Hear. Res.* 147: 293-302.
2. Greene, C.C., et al. 2001. DFNA25, a novel locus for dominant nonsyndromic hereditary hearing impairment, maps to 12q21-24. *Am. J. Hum. Genet.* 68: 254-260.
3. You, J., et al. 2001. A HECT domain E3 enzyme assembles novel polyubiquitin chains. *J. Biol. Chem.* 276: 19871-19878.
4. Lomax, M.I., et al. 2001. Differential gene expression following noise trauma in birds and mammals. *Noise Health* 3: 19-35.
5. Gong, T.W., et al. 2003. Characterization of the human UBE3B gene: structure, expression, evolution, and alternative splicing. *Genomics* 82: 143-152.
6. Ardley, H.C., et al. 2005. E3 ubiquitin ligases. *Essays Biochem.* 41: 15-30.
7. Sun, Y. 2005. Overview of approaches for screening for ubiquitin ligase inhibitors. *Methods Enzymol.* 399: 654-663.
8. Schüle, R., et al. 2009. Autosomal dominant spastic paraplegia with peripheral neuropathy maps to chr12q23-24. *Neurology* 72: 1893-1898.
9. Fogarty, M.P., et al. 2010. Allelic expression imbalance at high-density lipoprotein cholesterol locus MMAB-MVK. *Hum. Mol. Genet.* 19: 1921-1929.

CHROMOSOMAL LOCATION

Genetic locus: UBE3B (human) mapping to 12q24.11; Ube3b (mouse) mapping to 5 F.

SOURCE

UBE3B (G-14) is an affinity purified goat polyclonal antibody raised against a peptide mapping within an internal region of UBE3B of human origin.

PRODUCT

Each vial contains 200 µg IgG in 1.0 ml of PBS with < 0.1% sodium azide and 0.1% gelatin.

Blocking peptide available for competition studies, sc-162368 P, (100 µg peptide in 0.5 ml PBS containing < 0.1% sodium azide and 0.2% BSA).

APPLICATIONS

UBE3B (G-14) is recommended for detection of UBE3B of mouse, rat and human origin by Western Blotting (starting dilution 1:200, dilution range 1:100-1:1000), immunoprecipitation [1-2 µg per 100-500 µg of total protein (1 ml of cell lysate)], immunofluorescence (starting dilution 1:50, dilution range 1:50-1:500) and solid phase ELISA (starting dilution 1:30, dilution range 1:30-1:3000); non cross-reactive with UBE3C.

UBE3B (G-14) is also recommended for detection of UBE3B in additional species, including equine, canine, bovine, porcine and avian.

Suitable for use as control antibody for UBE3B siRNA (h): sc-96189, UBE3B siRNA (m): sc-154859, UBE3B shRNA Plasmid (h): sc-96189-SH, UBE3B shRNA Plasmid (m): sc-154859-SH, UBE3B shRNA (h) Lentiviral Particles: sc-96189-V and UBE3B shRNA (m) Lentiviral Particles: sc-154859-V.

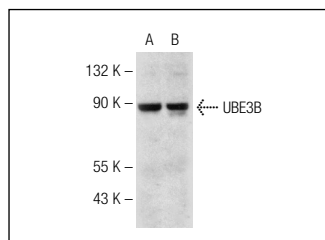
Molecular Weight of UBE3B_v1: 123 kDa.

Molecular Weight of UBE3B_v2: 82 kDa.

Molecular Weight of UBE3B_v3: 29 kDa.

Positive Controls: PC-3 cell lysate: sc-2220 or SK-MEL-28 cell lysate: sc-2236.

DATA



UBE3B (G-14): sc-162368. Western blot analysis of UBE3B expression in SK-MEL-28 (A) and PC-3 (B) whole cell lysates.

STORAGE

Store at 4° C, ****DO NOT FREEZE****. Stable for one year from the date of shipment. Non-hazardous. No MSDS required.

RESEARCH USE

For research use only, not for use in diagnostic procedures.

PROTOCOLS

See our web site at www.scbt.com or our catalog for detailed protocols and support products.