

yrdC (E-15): sc-162423

BACKGROUND

YrdC (yrdC domain-containing protein), also known as IRIP (ischemia/reperfusion-inducible protein homolog), SUA5 or DRIP3 (dopamine receptor-interacting protein 3), is a 279 amino acid ubiquitously expressed protein found at highest levels in brain, liver and pancreas. A member of the SUA5 family, yrdC is involved in certain aspects of transporter activity, such as the regulation of efflux transporter activity and cargo assembly. YrdC is a peripheral membrane protein that contains one yrdC-like domain, interacts with RSC1A1 and localizes to mitochondrial and plasma membranes. The gene encoding yrdC maps to human chromosome 1, which spans 260 million base pairs, contains over 3,000 genes and comprises nearly 8% of the human genome. Chromosome 1 houses a large number of disease-associated genes, including those that are involved in familial adenomatous polyposis, Stickler syndrome, Parkinson's disease, Gaucher disease, schizophrenia and Usher syndrome.

REFERENCES

- Lai, E., et al. 1989. Physical maps of the mouse and human immunoglobulin-like loci. *Adv. Immunol.* 46: 1-59.
- Lau, E.K., et al. 1999. Two novel polymorphic sequences in the glucocerebrosidase gene region enhance mutational screening and founder effect studies of patients with Gaucher disease. *Hum. Genet.* 104: 293-300.
- Chen, J., et al. 2003. Isolation and identification of a novel cDNA that encodes human yrdC protein. *J. Hum. Genet.* 48: 164-169.
- Plasilova, et al. 2004. Exclusion of an extracolonic disease modifier locus on chromosome 1p33-36 in a large Swiss familial adenomatous polyposis kindred. *Eur. J. Hum. Genet.* 12: 365-371.
- Jiang, W., et al. 2005. IRIP, a new ischemia/reperfusion-inducible protein that participates in the regulation of transporter activity. *Mol. Cell. Biol.* 25: 6496-6508.
- Jeronimo, C., et al. 2007. Systematic analysis of the protein interaction network for the human transcription machinery reveals the identity of the 7SK capping enzyme. *Mol. Cell* 27: 262-274.
- Online Mendelian Inheritance in Man, OMIM™. 2008. Johns Hopkins University, Baltimore, MD. MIM Number: 612276. World Wide Web URL: <http://www.ncbi.nlm.nih.gov/omim/>
- Holliday, E.G., et al. 2009. Strong evidence for a novel schizophrenia risk locus on chromosome 1p31.1 in homogeneous pedigrees from Tamil Nadu, India. *Am. J. Psychiatry* 166: 206-215.
- Prokopenko, O. and Mirochnitchenko, O. 2009. Ischemia-reperfusion-inducible protein modulates cell sensitivity to anticancer drugs by regulating activity of efflux transporter. *Am. J. Physiol., Cell Physiol.* 296: C1086-C1097.

CHROMOSOMAL LOCATION

Genetic locus: YRDC (human) mapping to 1p34.3; Yrdc (mouse) mapping to 4 D2.2.

SOURCE

yrdC (E-15) is an affinity purified goat polyclonal antibody raised against a peptide mapping within an internal region of yrdC of human origin.

PRODUCT

Each vial contains 200 µg IgG in 1.0 ml of PBS with < 0.1% sodium azide and 0.1% gelatin.

Blocking peptide available for competition studies, sc-162423 P, (100 µg peptide in 0.5 ml PBS containing < 0.1% sodium azide and 0.2% BSA).

APPLICATIONS

yrdC (E-15) is recommended for detection of yrdC of mouse, rat and human origin by Western Blotting (starting dilution 1:200, dilution range 1:100-1:1000), immunofluorescence (starting dilution 1:50, dilution range 1:50-1:500) and solid phase ELISA (starting dilution 1:30, dilution range 1:30-1:3000).

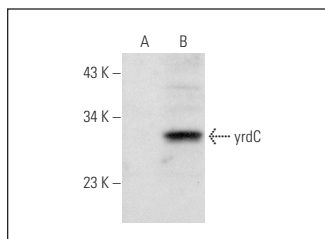
yrdC (E-15) is also recommended for detection of yrdC in additional species, including bovine.

Suitable for use as control antibody for yrdC siRNA (h): sc-88267, yrdC siRNA (m): sc-155419, yrdC shRNA Plasmid (h): sc-88267-SH, yrdC shRNA Plasmid (m): sc-155419-SH, yrdC shRNA (h) Lentiviral Particles: sc-88267-V and yrdC shRNA (m) Lentiviral Particles: sc-155419-V.

Molecular Weight of yrdC: 30 kDa.

Positive Controls: yrdC (h2): 293T Lysate: sc-111424.

DATA



yrdC (E-15): sc-162423. Western blot analysis of yrdC expression in non-transfected: sc-117752 (A) and human yrdC transfected: sc-111424 (B) 293T whole cell lysates.

STORAGE

Store at 4° C, ****DO NOT FREEZE****. Stable for one year from the date of shipment. Non-hazardous. No MSDS required.

RESEARCH USE

For research use only, not for use in diagnostic procedures.

PROTOCOLS

See our web site at www.scbt.com or our catalog for detailed protocols and support products.