

Get4 (S-16): sc-162612

BACKGROUND

Get4 (Golgi to ER traffic protein 4 homolog), also known as CEE (conserved edge-expressed protein), TRC35 (transmembrane domain recognition complex 35 kDa subunit) or CGI-20, is a 327 amino acid cytoplasmic protein that exists as 2 alternatively spliced isoforms. Get4 forms a multiprotein complex, known as the BAT3 complex, with UBL4A, BAT3 and ARSA. The BAT3 complex plays a role in transporting tail-anchored membrane proteins to the endoplasmic reticulum membrane. The gene encoding Get4 maps to human chromosome 7p22.3. Human chromosome 7 houses over 1,000 genes, comprises nearly 5% of the human genome and has been linked to Osteogenesis imperfecta, Pendred syndrome, Lissencephaly, Citrullinemia and Shwachman-Diamond syndrome.

REFERENCES

1. Tspirouras, P., et al. 1983. Restriction fragment length polymorphism associated with the pro α 2(I) gene of human type I procollagen. Application to a family with an autosomal dominant form of osteogenesis imperfecta. *J. Clin. Invest.* 72: 1262-1267.
2. Lai, C.H., et al. 2000. Identification of novel human genes evolutionarily conserved in *Caenorhabditis elegans* by comparative proteomics. *Genome Res.* 10: 703-713.
3. Iwasaki, S., et al. 2001. Long-term audiological feature in Pendred syndrome caused by PDS mutation. *Arch. Otolaryngol. Head Neck Surg.* 127: 705-708.
4. Reiner, O., et al. 2006. Lissencephaly 1 linking to multiple diseases: mental retardation, neurodegeneration, schizophrenia, male sterility, and more. *Neuromolecular Med.* 8: 547-565.
5. Fernandes, J.M., et al. 2008. Genomic, evolutionary, and expression analyses of cee, an ancient gene involved in normal growth and development. *Genomics* 91: 315-325.
6. Chang, Y.W., et al. 2010. Crystal structure of Get4-Get5 complex and its interactions with Sgt2, Get3, and Ydj1. *J. Biol. Chem.* 285: 9962-9970.
7. Mariappan, M., et al. 2010. A ribosome-associating factor chaperones tail-anchored membrane proteins. *Nature* 466: 1120-1124.

CHROMOSOMAL LOCATION

Genetic locus: GET4 (human) mapping to 7p22.3; Get4 (mouse) mapping to 5 G2.

SOURCE

Get4 (S-16) is an affinity purified goat polyclonal antibody raised against a peptide mapping within an internal region of Get4 of human origin.

PRODUCT

Each vial contains 200 μ g IgG in 1.0 ml of PBS with < 0.1% sodium azide and 0.1% gelatin.

Blocking peptide available for competition studies, sc-162612 P, (100 μ g peptide in 0.5 ml PBS containing < 0.1% sodium azide and 0.2% BSA).

APPLICATIONS

Get4 (S-16) is recommended for detection of Get4 of mouse, rat and human origin by Western Blotting (starting dilution 1:200, dilution range 1:100-1:1000), immunoprecipitation [1-2 μ g per 100-500 μ g of total protein (1 ml of cell lysate)], immunofluorescence (starting dilution 1:50, dilution range 1:50-1:500) and solid phase ELISA (starting dilution 1:30, dilution range 1:30-1:3000).

Get4 (S-16) is also recommended for detection of Get4 in additional species, including equine, bovine and avian.

Suitable for use as control antibody for Get4 siRNA (h): sc-89392, Get4 siRNA (m): sc-108148, Get4 shRNA Plasmid (h): sc-89392-SH, Get4 shRNA Plasmid (m): sc-108148-SH, Get4 shRNA (h) Lentiviral Particles: sc-89392-V and Get4 shRNA (m) Lentiviral Particles: sc-108148-V.

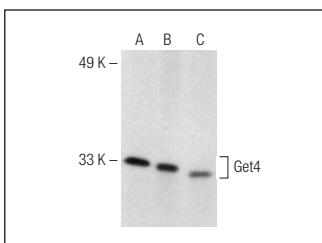
Molecular Weight of Get4 isoform 1/2: 37/31 kDa.

Positive Controls: F9 cell lysate: sc-2245, K-562 whole cell lysate: sc-2203 or LNCaP cell lysate: sc-2231.

RECOMMENDED SECONDARY REAGENTS

To ensure optimal results, the following support (secondary) reagents are recommended: 1) Western Blotting: use donkey anti-goat IgG-HRP: sc-2020 (dilution range: 1:2000-1:100,000) or Cruz Marker™ compatible donkey anti-goat IgG-HRP: sc-2033 (dilution range: 1:2000-1:5000), Cruz Marker™ Molecular Weight Standards: sc-2035, TBS Blotto A Blocking Reagent: sc-2333 and Western Blotting Luminol Reagent: sc-2048. 2) Immunoprecipitation: use Protein A/G PLUS-Agarose: sc-2003 (0.5 ml agarose/2.0 ml). 3) Immunofluorescence: use donkey anti-goat IgG-FITC: sc-2024 (dilution range: 1:100-1:400) or donkey anti-goat IgG-TR: sc-2783 (dilution range: 1:100-1:400) with UltraCruz™ Mounting Medium: sc-24941.

DATA



Get4 (S-16): sc-162612. Western blot analysis of Get4 expression in F9 (A), K-562 (B) and LNCaP (C) whole cell lysates.

STORAGE

Store at 4° C, **DO NOT FREEZE**. Stable for one year from the date of shipment. Non-hazardous. No MSDS required.

RESEARCH USE

For research use only, not for use in diagnostic procedures.