

# Pax-8 A/B (A-15): sc-16279

## BACKGROUND

The pax family encodes transcription factors that function during embryogenesis and regulate the temporal and position-dependent differentiation of cells. Pax-8 is expressed in the developing and adult thyroid, the developing secretory system and at lower levels, in the adult kidney. Pax-8 complexes with TTF-1 and TTF-2 to induce thyroid follicular cell differentiation and thyroid hormone biosynthesis by regulating the expression of sodium iodide symporter (NIS), thyroid peroxidase (TPO), thyroglobulin (TG) and the thyrotropin receptor (TSHR). Treatment of FRTL-5 cells with TGF $\beta$ 1 decreases Pax-8 mRNA levels and Pax-8 DNA binding activity, which suppresses the expression of TG and the formation of thyrocytes. Patients who have autosomal dominant mutations of the Pax-8 gene develop thyroid dysgenesis. The Pax-8 gene produces six isoforms, A to F, that are generated by alternative splicing and differ in their carboxy-terminal regions. The Pax-8 isoforms display different DNA binding capacities are thought to be functionally distinct. The gene which encodes Pax-8 maps to human chromosome 2q13.

## CHROMOSOMAL LOCATION

Genetic locus: PAX8 (human) mapping to 2q13; Pax8 (mouse) mapping to 2 A3.

## SOURCE

Pax-8 A/B (A-15) is an affinity purified goat polyclonal antibody raised against a peptide mapping within an internal region of Pax-8 A/B of human origin.

## PRODUCT

Each vial contains 200  $\mu$ g IgG in 1.0 ml of PBS with < 0.1% sodium azide and 0.1% gelatin. Also available as TransCruz reagent for Gel Supershift and ChIP applications, sc-16279 X, 200  $\mu$ g/0.1 ml.

Blocking peptide available for competition studies, sc-16279 P, (100  $\mu$ g peptide in 0.5 ml PBS containing < 0.1% sodium azide and 0.2% BSA).

## APPLICATIONS

Pax-8 A/B (A-15) is recommended for detection of Pax-8 A and Pax-8 B of mouse, rat and human origin by Western Blotting (starting dilution 1:200, dilution range 1:100-1:1000), immunoprecipitation [1-2  $\mu$ g per 100-500  $\mu$ g of total protein (1 ml of cell lysate)], immunofluorescence (starting dilution 1:50, dilution range 1:50-1:500) and solid phase ELISA (starting dilution 1:30, dilution range 1:30-1:3000). Pax-8 A/B (A-15) is also recommended for detection of Pax-8 A and Pax-8 B in additional species, including equine, canine and bovine.

Suitable for use as control antibody for Pax-8 siRNA (h): sc-38751, Pax-8 siRNA (m): sc-38752, Pax-8 shRNA Plasmid (h): sc-38751-SH, Pax-8 shRNA Plasmid (m): sc-38752-SH, Pax-8 shRNA (h) Lentiviral Particles: sc-38751-V and Pax-8 shRNA (m) Lentiviral Particles: sc-38752-V.

Pax-8 A/B (A-15) X TransCruz antibody is recommended for Gel Supershift and ChIP applications.

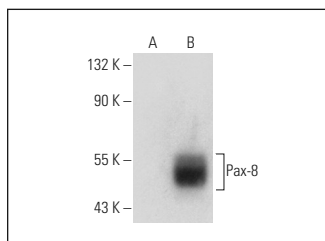
Molecular Weight of Pax-8 A/B: 62 kDa.

Positive Controls: Pax-8 (m): 293T Lysate: sc-127301.

## RECOMMENDED SECONDARY REAGENTS

To ensure optimal results, the following support (secondary) reagents are recommended: 1) Western Blotting: use donkey anti-goat IgG-HRP: sc-2020 (dilution range: 1:2000-1:100,000) or Cruz Marker™ compatible donkey anti-goat IgG-HRP: sc-2033 (dilution range: 1:2000-1:5000), Cruz Marker™ Molecular Weight Standards: sc-2035, TBS Blotto A Blocking Reagent: sc-2333 and Western Blotting Luminol Reagent: sc-2048. 2) Immunoprecipitation: use Protein A/G PLUS-Agarose: sc-2003 (0.5 ml agarose/2.0 ml). 3) Immunofluorescence: use donkey anti-goat IgG-FITC: sc-2024 (dilution range: 1:100-1:400) or donkey anti-goat IgG-TR: sc-2783 (dilution range: 1:100-1:400) with UltraCruz™ Mounting Medium: sc-24941.

## DATA



Pax-8 A/B (A-15): sc-16279. Western blot analysis of Pax-8 expression in non-transfected: sc-117752 (A) and mouse Pax-8 transfected: sc-127301 (B) 293T whole cell lysates.

## SELECT PRODUCT CITATIONS

1. Ferretti, E., et al. 2005. Expression, regulation, and function of paired-box gene 8 in the human placenta and placental cancer cell lines. *Endocrinology* 146: 4009-4015.
2. Li, W., et al. 2010. Human sodium-iodide symporter (hNIS) gene expression is inhibited by a *trans*-active transcriptional repressor, NIS-repressor, containing PARP-1 in thyroid cancer cells. *Endocr. Relat. Cancer* 17: 383-398.

## STORAGE

Store at 4° C, \*\*DO NOT FREEZE\*\*. Stable for one year from the date of shipment. Non-hazardous. No MSDS required.

## RESEARCH USE

For research use only, not for use in diagnostic procedures.

## PROTOCOLS

See our web site at [www.scbt.com](http://www.scbt.com) or our catalog for detailed protocols and support products.



Try **Pax-8 (PAX8R1): sc-81353**, our highly recommended monoclonal alternative to Pax-8 A/B (A-15).