

# KIAA1432 (N-15): sc-162987

## BACKGROUND

KIAA1432, also known as CIP150 (connexin 43 interacting protein of 150 kDa), is a 1,423 amino acid protein that contains 2 WD repeats and is a member of the RIC1 family. KIAA1432 is a single pass membrane protein that is widely expressed at a low level and found in kidney and several cell lines. Essential for the phosphorylation and localization of GJA1, KIAA1432 is post-translationally phosphorylated and alternatively spliced generating three isoforms. The gene encoding KIAA1432 maps to human chromosome 9, which houses over 900 genes and comprises nearly 4% of the human genome. Hereditary hemorrhagic telangiectasia, which is characterized by harmful vascular defects, and Familial dysautonomia, are both associated with chromosome 9. Notably, chromosome 9 encompasses the largest interferon family gene cluster.

## REFERENCES

1. Akiyama, M., Ishida, N., Ogawa, T., Yogo, K. and Takeya, T. 2005. Molecular cloning and functional analysis of a novel Cx43 partner protein CIP150. *Biochem. Biophys. Res. Commun.* 335: 1264-1271.
2. Zhuang, H., Kosboth, M., Lee, P., Rice, A., Driscoll, D.J., Zori, R., Narain, S., Lyons, R., Satoh, M., Sobel, E. and Reeves, W.H. 2006. Lupus-like disease and high interferon levels corresponding to trisomy of the type I interferon cluster on chromosome 9p. *Arthritis Rheum.* 54: 1573-1579.
3. Burmeister, T., Schwartz, S., Taubald, A., Jost, E., Lipp, T., Schneller, F., Diedrich, H., Thomssen, H., Mey, U.J., Eucker, J., Rieder, H., Gökbüget, N., Hoelzer, D. and Thiel, E. 2007. Atypical Bcr-Abl mRNA transcripts in adult acute lymphoblastic leukemia. *Haematologica* 92: 1699-1702.
4. Cottin, V., Dupuis-Girod, S., Lesca, G. and Cordier, J.F. 2007. Pulmonary vascular manifestations of hereditary hemorrhagic telangiectasia (rendu-osler disease). *Respiration* 74: 361-378.
5. Zeitz, M.J., Marella, N.V., Malyavantham, K.S., Goetze, S., Bode, J., Raska, I. and Berezney, R. 2009. Organization of the amplified type I interferon gene cluster and associated chromosome regions in the interphase nucleus of human osteosarcoma cells. *Chromosome Res.* 17: 305-319.

## CHROMOSOMAL LOCATION

Genetic locus: KIAA1432 (human) mapping to 9p24.1; C030046E11Rik (mouse) mapping to 19 C1.

## SOURCE

KIAA1432 (N-15) is an affinity purified goat polyclonal antibody raised against a peptide mapping near the N-terminus of KIAA1432 of human origin.

## PRODUCT

Each vial contains 200 µg IgG in 1.0 ml of PBS with < 0.1% sodium azide and 0.1% gelatin.

Blocking peptide available for competition studies, sc-162987 P, (100 µg peptide in 0.5 ml PBS containing < 0.1% sodium azide and 0.2% BSA).

## APPLICATIONS

KIAA1432 (N-15) is recommended for detection of KIAA1432 of human origin, C030046E11Rik of mouse origin and the corresponding rat homolog by Western Blotting (starting dilution 1:200, dilution range 1:100-1:1000), immunoprecipitation [1-2 µg per 100-500 µg of total protein (1 ml of cell lysate)], immunofluorescence (starting dilution 1:50, dilution range 1:50-1:500) and solid phase ELISA (starting dilution 1:30, dilution range 1:30-1:3000); non cross-reactive with other KIAA family members.

KIAA1432 (N-15) is also recommended for detection of KIAA1432 in additional species, including canine and bovine.

Suitable for use as control antibody for KIAA1432 siRNA (h): sc-92643, C030046E11Rik siRNA (m): sc-141811, KIAA1432 shRNA Plasmid (h): sc-92643-SH, C030046E11Rik shRNA Plasmid (m): sc-141811-SH, KIAA1432 shRNA (h) Lentiviral Particles: sc-92643-V and C030046E11Rik shRNA (m) Lentiviral Particles: sc-141811-V.

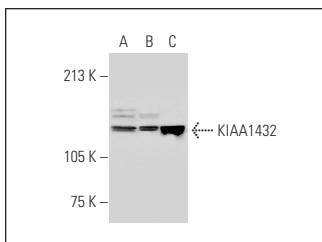
Molecular Weight of KIAA1432 isoforms: 159/155/131 kDa.

Positive Controls: HeLa whole cell lysate: sc-2200, Jurkat whole cell lysate: sc-2204 or Hep G2 cell lysate: sc-2227.

## RECOMMENDED SECONDARY REAGENTS

To ensure optimal results, the following support (secondary) reagents are recommended: 1) Western Blotting: use donkey anti-goat IgG-HRP: sc-2020 (dilution range: 1:2000-1:100,000) or Cruz Marker™ compatible donkey anti-goat IgG-HRP: sc-2033 (dilution range: 1:2000-1:5000), Cruz Marker™ Molecular Weight Standards: sc-2035, TBS Blotto A Blocking Reagent: sc-2333 and Western Blotting Luminol Reagent: sc-2048. 2) Immunoprecipitation: use Protein A/G PLUS-Agarose: sc-2003 (0.5 ml agarose/2.0 ml). 3) Immunofluorescence: use donkey anti-goat IgG-FITC: sc-2024 (dilution range: 1:100-1:400) or donkey anti-goat IgG-TR: sc-2783 (dilution range: 1:100-1:400) with UltraCruz™ Mounting Medium: sc-24941.

## DATA



KIAA1432 (N-15): sc-162987. Western blot analysis of KIAA1432 expression in HeLa (A), Jurkat (B) and Hep G2 (C) whole cell lysates.

## STORAGE

Store at 4° C, \*\*DO NOT FREEZE\*\*. Stable for one year from the date of shipment. Non-hazardous. No MSDS required.

## RESEARCH USE

For research use only, not for use in diagnostic procedures.