

MPP7 (N-15): sc-163089

BACKGROUND

The MAGUK (membrane-associated guanylate kinase homologs) family of proteins contain multiple protein-binding domains and are involved in cell junction organization, tumor suppression, and signaling. The MAGUK family is divided into four subfamilies: DLG-like, ZO1-like, p55-like and LIN2-like. MPP7 (MAGUK p55 subfamily member 7), also known as palmitoylated membrane protein 7, is a 576 amino acid protein that belongs to the MAGUK family and assists in the assembly of protein complexes. A peripheral membrane protein that exists as a heterodimer, MPP7 enhances tight junction formation and epithelial cell polarity. MPP7 contains one SH3 domain, a guanylate kinase-like domain, two L27 domains and a single PDZ (DHR) domain. The gene encoding MPP7 maps to human chromosome 10p12.1.

REFERENCES

- González-Mariscal, L., Betanzos, A. and Avila-Flores, A. 2000. MAGUK proteins: structure and role in the tight junction. *Semin. Cell Dev. Biol.* 11: 315-324.
- Caruana, G. 2002. Genetic studies define MAGUK proteins as regulators of epithelial cell polarity. *Int. J. Dev. Biol.* 46: 511-518.
- Katoh, M. and Katoh, M. 2004. Identification and characterization of human MPP7 gene and mouse Mpp7 gene in silico. *Int. J. Mol. Med.* 13: 333-338.
- Godreau, D., Neyroud, N., Vranckx, R. and Hatem, S. 2004. MAGUKs: beyond ionic channel anchoring. *Med. Sci.* 20: 84-88.
- Bohl, J., Brimer, N., Lyons, C. and Vande Pol, S.B. 2007. The stardust family protein MPP7 forms a tripartite complex with LIN7 and DLG1 that regulates the stability and localization of DLG1 to cell junctions. *J. Biol. Chem.* 282: 9392-9400.
- Stucke, V.M., Timmerman, E., Vandekerckhove, J., Gevaert, K. and Hall, A. 2007. The MAGUK protein MPP7 binds to the polarity protein hDlg1 and facilitates epithelial tight junction formation. *Mol. Biol. Cell* 18: 1744-1755.
- Online Mendelian Inheritance in Man, OMIM™. 2007. Johns Hopkins University, Baltimore, MD. MIM Number: 610973. World Wide Web URL: <http://www.ncbi.nlm.nih.gov/omim/>

CHROMOSOMAL LOCATION

Genetic locus: MPP7 (human) mapping to 10p12.1; Mpp7 (mouse) mapping to 18 A1.

SOURCE

MPP7 (N-15) is an affinity purified goat polyclonal antibody raised against a peptide mapping near the N-terminus of MPP7 of human origin.

PRODUCT

Each vial contains 200 µg IgG in 1.0 ml of PBS with < 0.1% sodium azide and 0.1% gelatin.

Blocking peptide available for competition studies, sc-163089 P, (100 µg peptide in 0.5 ml PBS containing < 0.1% sodium azide and 0.2% BSA).

APPLICATIONS

MPP7 (N-15) is recommended for detection of MPP7 of mouse, rat and human origin by Western Blotting (starting dilution 1:200, dilution range 1:100-1:1000), immunoprecipitation [1-2 µg per 100-500 µg of total protein (1 ml of cell lysate)], immunofluorescence (starting dilution 1:50, dilution range 1:50-1:500) and solid phase ELISA (starting dilution 1:30, dilution range 1:30-1:3000); non cross-reactive with MPP2, MPP3 or MPP4.

MPP7 (N-15) is also recommended for detection of MPP7 in additional species, including equine, canine, bovine, porcine and avian.

Suitable for use as control antibody for MPP7 siRNA (h): sc-90332, MPP7 siRNA (m): sc-149537, MPP7 shRNA Plasmid (h): sc-90332-SH, MPP7 shRNA Plasmid (m): sc-149537-SH, MPP7 shRNA (h) Lentiviral Particles: sc-90332-V and MPP7 shRNA (m) Lentiviral Particles: sc-149537-V.

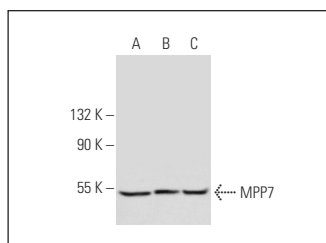
Molecular Weight of MPP7: 66 kDa.

Positive Controls: HT-1080 whole cell lysate: sc-364183, HeLa whole cell lysate: sc-2200 or Raji whole cell lysate: sc-364236.

RECOMMENDED SECONDARY REAGENTS

To ensure optimal results, the following support (secondary) reagents are recommended: 1) Western Blotting: use donkey anti-goat IgG-HRP: sc-2020 (dilution range: 1:2000-1:100,000) or Cruz Marker™ compatible donkey anti-goat IgG-HRP: sc-2033 (dilution range: 1:2000-1:5000), Cruz Marker™ Molecular Weight Standards: sc-2035, TBS Blotto A Blocking Reagent: sc-2333 and Western Blotting Luminol Reagent: sc-2048. 2) Immunoprecipitation: use Protein A/G PLUS-Agarose: sc-2003 (0.5 ml agarose/2.0 ml). 3) Immunofluorescence: use donkey anti-goat IgG-FITC: sc-2024 (dilution range: 1:100-1:400) or donkey anti-goat IgG-TR: sc-2783 (dilution range: 1:100-1:400) with UltraCruz™ Mounting Medium: sc-24941.

DATA



MPP7 (N-15): sc-163089. Western blot analysis of MPP7 expression in HT-1080 (A), HeLa (B) and Raji (C) whole cell lysates.

STORAGE

Store at 4° C, **DO NOT FREEZE**. Stable for one year from the date of shipment. Non-hazardous. No MSDS required.

RESEARCH USE

For research use only, not for use in diagnostic procedures.