

MXRA8 (W-14): sc-163103

BACKGROUND

MXRA8 (matrix-remodelling associated 8), also known as limitrin, is a 442 amino acid single-pass type I membrane protein that is implicated in the maintenance and maturation of the blood-brain barrier. Containing two Ig-like V-type (immunoglobulin-like) domains, MXRA8 exists as two alternatively spliced isoforms that are encoded by a gene that maps to human chromosome 1p36.33. Human chromosome 1 spans 260 million base pairs, contains over 3,000 genes and comprises nearly 8% of the human genome. Chromosome 1 houses a large number of disease-associated genes, including those that are involved in familial adenomatous polyposis, Stickler syndrome, Parkinson's disease, Gaucher disease, schizophrenia and Usher syndrome. Aberrations in chromosome 1 are found in a variety of cancers, including head and neck cancer, malignant melanoma and multiple myeloma.

REFERENCES

1. Eudy, J.D., et al. 1998. Mutation of a gene encoding a protein with extracellular matrix motifs in Usher syndrome type IIa. *Science* 280: 1753-1757.
2. Tayebi, N., et al. 2001. Gaucher disease and parkinsonism: a phenotypic and genotypic characterization. *Mol. Genet. Metab.* 73: 313-321.
3. Yonezawa, T., et al. 2003. Limitrin, a novel immunoglobulin superfamily protein localized to glia limitans formed by astrocyte endfeet. *Glia* 44: 190-204.
4. Plasilova, M., et al. 2004. Exclusion of an extracolonic disease modifier locus on chromosome 1p33-36 in a large Swiss familial adenomatous polyposis kindred. *Eur. J. Hum. Genet.* 12: 365-371.
5. Betarbet, R., et al. 2008. Fas-associated factor 1 and Parkinson's disease. *Neurobiol. Dis.* 31: 309-315.
6. Holliday, E.G., et al. 2009. Strong evidence for a novel schizophrenia risk locus on chromosome 1p31.1 in homogeneous pedigrees from Tamil Nadu, India. *Am. J. Psychiatry* 166: 206-215.
7. Balcárková, J., et al. 2009. Gain of chromosome arm 1q in patients in relapse and progression of multiple myeloma. *Cancer Genet. Cytogenet.* 192: 68-72.
8. Yokoi, T., et al. 2009. Analysis of the vitreous membrane in a case of type 1 Stickler syndrome. *Graefes Arch. Clin. Exp. Ophthalmol.* 247: 715-718.

CHROMOSOMAL LOCATION

Genetic locus: MXRA8 (human) mapping to 1p36.33; Mxra8 (mouse) mapping to 4 E2.

SOURCE

MXRA8 (W-14) is an affinity purified goat polyclonal antibody raised against a peptide mapping within an extracellular domain of MXRA8 of human origin.

STORAGE

Store at 4° C, **DO NOT FREEZE**. Stable for one year from the date of shipment. Non-hazardous. No MSDS required.

PRODUCT

Each vial contains 200 µg IgG in 1.0 ml of PBS with < 0.1% sodium azide and 0.1% gelatin.

Blocking peptide available for competition studies, sc-163103 P, (100 µg peptide in 0.5 ml PBS containing < 0.1% sodium azide and 0.2% BSA).

APPLICATIONS

MXRA8 (W-14) is recommended for detection of MXRA8 of mouse, rat and human origin by Western Blotting (starting dilution 1:200, dilution range 1:100-1:1000), immunoprecipitation [1-2 µg per 100-500 µg of total protein (1 ml of cell lysate)], immunofluorescence (starting dilution 1:50, dilution range 1:50-1:500) and solid phase ELISA (starting dilution 1:30, dilution range 1:30-1:3000); non cross-reactive with MXRA5 or MXRA7.

MXRA8 (W-14) is also recommended for detection of MXRA8 in additional species, including equine, canine and porcine.

Suitable for use as control antibody for MXRA8 siRNA (h): sc-88183, MXRA8 siRNA (m): sc-149727, MXRA8 shRNA Plasmid (h): sc-88183-SH, MXRA8 shRNA Plasmid (m): sc-149727-SH, MXRA8 shRNA (h) Lentiviral Particles: sc-88183-V and MXRA8 shRNA (m) Lentiviral Particles: sc-149727-V.

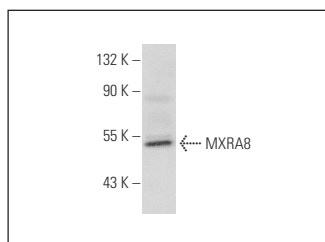
Molecular Weight of MXRA8 isoforms: 49/50 kDa.

Positive Controls: NIH/3T3 whole cell lysate: sc-2210.

RECOMMENDED SECONDARY REAGENTS

To ensure optimal results, the following support (secondary) reagents are recommended: 1) Western Blotting: use donkey anti-goat IgG-HRP: sc-2020 (dilution range: 1:2000-1:100,000) or Cruz Marker™ compatible donkey anti-goat IgG-HRP: sc-2033 (dilution range: 1:2000-1:5000), Cruz Marker™ Molecular Weight Standards: sc-2035, TBS Blotto A Blocking Reagent: sc-2333 and Western Blotting Luminol Reagent: sc-2048. 2) Immunoprecipitation: use Protein A/G PLUS-Agarose: sc-2003 (0.5 ml agarose/2.0 ml). 3) Immunofluorescence: use donkey anti-goat IgG-FITC: sc-2024 (dilution range: 1:100-1:400) or donkey anti-goat IgG-TR: sc-2783 (dilution range: 1:100-1:400) with UltraCruz™ Mounting Medium: sc-24941.

DATA



MXRA8 (W-14): sc-163103. Western blot analysis of MXRA8 expression in NIH/3T3 whole cell lysate.

RESEARCH USE

For research use only, not for use in diagnostic procedures.