

PMPCA (E-15): sc-163244

BACKGROUND

PMPCA [peptidase (mitochondrial processing) α], also known as α -MPP, P-55, INPP5E or MPPA, is a 525 amino acid protein that belongs to the peptidase M16 family and exists as a heterodimer of α and β subunits. Localizing to mitochondrial matrix, PMPCA cleaves transit peptides from mitochondrial protein precursors. PMPCA is encoded by a gene that maps to human chromosome 9, which houses over 900 genes and comprises nearly 4% of the human genome. Hereditary hemorrhagic telangiectasia, which is characterized by harmful vascular defects, and Familial dysautonomia, are both associated with chromosome 9. Notably, chromosome 9 encompasses the largest interferon family gene cluster.

REFERENCES

- Nagase, T., Miyajima, N., Tanaka, A., Sazuka, T., Seki, N., Sato, S., Tabata, S., Ishikawa, K., Kawarabayasi, Y. and Kotani, H. 1995. Prediction of the coding sequences of unidentified human genes. III. The coding sequences of 40 new genes (KIAA0081-KIAA0120) deduced by analysis of cDNA clones from human cell line KG-1. *DNA Res.* 2: 37-43.
- Luciano, P., Geoffroy, S., Brandt, A., Hernandez, J.F. and Geli, V. 1997. Functional cooperation of the mitochondrial processing peptidase subunits. *J. Mol. Biol.* 272: 213-225.
- Zhuang, H., Kosboth, M., Lee, P., Rice, A., Driscoll, D.J., Zori, R., Narain, S., Lyons, R., Satoh, M., Sobel, E. and Reeves, W.H. 2006. Lupus-like disease and high interferon levels corresponding to trisomy of the type I interferon cluster on chromosome 9p. *Arthritis Rheum.* 54: 1573-1579.
- Burmeister, T., Schwartz, S., Taubald, A., Jost, E., Lipp, T., Schneller, F., Diedrich, H., Thomssen, H., Mey, U.J., Eucker, J., Rieder, H., Gökbuget, N., Hoelzer, D. and Thiel, E. 2007. Atypical BCR-ABL mRNA transcripts in adult acute lymphoblastic leukemia. *Haematologica* 92: 1699-1702.
- Cottin, V., Dupuis-Girod, S., Lesca, G. and Cordier, J.F. 2007. Pulmonary vascular manifestations of hereditary hemorrhagic telangiectasia (rendu-osler disease). *Respiration* 74: 361-378.
- Zeit, M.J., Marella, N.V., Malyavantham, K.S., Goetze, S., Bode, J., Raska, I. and Berezney, R. 2009. Organization of the amplified type I interferon gene cluster and associated chromosome regions in the interphase nucleus of human osteosarcoma cells. *Chromosome Res.* 17: 305-319.

CHROMOSOMAL LOCATION

Genetic locus: PMPCA (human) mapping to 9q34.3; Pmpca (mouse) mapping to 2 A3.

SOURCE

PMPCA (E-15) is an affinity purified goat polyclonal antibody raised against a peptide mapping within an internal region of PMPCA of human origin.

RESEARCH USE

For research use only, not for use in diagnostic procedures.

PRODUCT

Each vial contains 200 μ g IgG in 1.0 ml of PBS with < 0.1% sodium azide and 0.1% gelatin.

Blocking peptide available for competition studies, sc-163244 P, (100 μ g peptide in 0.5 ml PBS containing < 0.1% sodium azide and 0.2% BSA).

APPLICATIONS

PMPCA (E-15) is recommended for detection of PMPCA of mouse, rat and human origin by Western Blotting (starting dilution 1:200, dilution range 1:100-1:1000), immunoprecipitation [1-2 μ g per 100-500 μ g of total protein (1 ml of cell lysate)], immunofluorescence (starting dilution 1:50, dilution range 1:50-1:500) and solid phase ELISA (starting dilution 1:30, dilution range 1:30-1:3000).

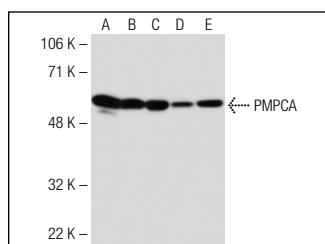
PMPCA (E-15) is also recommended for detection of PMPCA in additional species, including equine, canine, bovine and avian.

Suitable for use as control antibody for PMPCA siRNA (h): sc-92579, PMPCA siRNA (m): sc-152350, PMPCA shRNA Plasmid (h): sc-92579-SH, PMPCA shRNA Plasmid (m): sc-152350-SH, PMPCA shRNA (h) Lentiviral Particles: sc-92579-V and PMPCA shRNA (m) Lentiviral Particles: sc-152350-V.

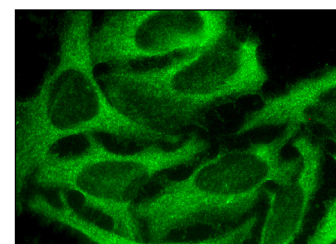
Molecular Weight of PMPCA: 58 kDa.

Positive Controls: SK-BR-3 cell lysate: sc-2218, K-562 whole cell lysate: sc-2203 or HL-60 whole cell lysate: sc-2209.

DATA



PMPCA (E-15): sc-163244. Western blot analysis of PMPCA expression in MCF7 (A), SK-BR-3 (B), K-562 (C), HL-60 (D) and M1 (E) whole cell lysates.



PMPCA (E-15): sc-163244. Immunofluorescence staining of methanol-fixed HeLa cells showing cytoplasmic localization.

STORAGE

Store at 4° C, **DO NOT FREEZE**. Stable for one year from the date of shipment. Non-hazardous. No MSDS required.



Try **PMPCA (B-8): sc-390471** or **PMPCA (G-2): sc-390470**, our highly recommended monoclonal alternatives to PMPCA (E-15).