

Rosbin (S-12): sc-163312

BACKGROUND

Rosbin, also known as RSBN1 (round spermatid basic protein 1), is an 802 amino acid nuclear protein that belongs to the round spermatid basic protein 1 family. Existing as two alternatively spliced isoforms, Rosbin is phosphorylated by PKA and is expressed specifically in testis, where it is thought to participate in transcriptional regulation in haploid germ cells. The gene encoding Rosbin maps to human chromosome 1, which spans 260 million base pairs, contains over 3,000 genes and comprises nearly 8% of the human genome. Chromosome 1 houses a large number of disease-associated genes, including those that are involved in familial adenomatous polyposis, Stickler syndrome, Parkinson's disease, Gaucher disease, schizophrenia and Usher syndrome. Aberrations in chromosome 1 are found in a variety of cancers, including head and neck cancer, malignant melanoma and multiple myeloma.

REFERENCES

1. Eudy, J.D., Weston, M.D., Yao, S., Hoover, D.M., Rehm, H.L., Ma-Edmonds, M., Yan, D., Ahmad, I., Cheng, J.J., Ayuso, C., Cremers, C., Davenport, S., Moller, C., Talmadge, C.B., Beisel, K.W., et al. 1998. Mutation of a gene encoding a protein with extracellular matrix motifs in Usher syndrome type IIa. *Science* 280: 1753-1757.
2. Tayebi, N., Callahan, M., Madike, V., Stubblefield, B.K., Orvisky, E., Krasnewich, D., Fillano, J.J. and Sidransky, E. 2001. Gaucher disease and parkinsonism: a phenotypic and genotypic characterization. *Mol. Genet. Metab.* 73: 313-321.
3. Takahashi, T., Tanaka, H., Iguchi, N., Kitamura, K., Chen, Y., Maekawa, M., Nishimura, H., Ohta, H., Miyagawa, Y., Matsumiya, K., Okuyama, A. and Nishimune, Y. 2004. Rosbin: a novel homeobox-like protein gene expressed exclusively in round spermatids. *Biol. Reprod.* 70: 1485-1492.
4. Plasilova, M., Russell, A.M., Wanner, A., Wolf, A., Dobbie, Z., Müller, H.J. and Heinemann, K. 2004. Exclusion of an extracolonic disease modifier locus on chromosome 1p33-36 in a large Swiss familial adenomatous polyposis kindred. *Eur. J. Hum. Genet.* 12: 365-371.

CHROMOSOMAL LOCATION

Genetic locus: RSBN1 (human) mapping to 1p13.2; Rsb1 (mouse) mapping to 3 F2.2.

SOURCE

Rosbin (S-12) is an affinity purified goat polyclonal antibody raised against a peptide mapping within an internal region of Rosbin of human origin.

PRODUCT

Each vial contains 200 µg IgG in 1.0 ml of PBS with < 0.1% sodium azide and 0.1% gelatin.

Blocking peptide available for competition studies, sc-163312 P, (100 µg peptide in 0.5 ml PBS containing < 0.1% sodium azide and 0.2% BSA).

STORAGE

Store at 4° C, ****DO NOT FREEZE****. Stable for one year from the date of shipment. Non-hazardous. No MSDS required.

APPLICATIONS

Rosbin (S-12) is recommended for detection of Rosbin of mouse, rat and human origin by Western Blotting (starting dilution 1:200, dilution range 1:100-1:1000), immunoprecipitation [1-2 µg per 100-500 µg of total protein (1 ml of cell lysate)], immunofluorescence (starting dilution 1:50, dilution range 1:50-1:500) and solid phase ELISA (starting dilution 1:30, dilution range 1:30-1:3000).

Rosbin (S-12) is also recommended for detection of Rosbin in additional species, including equine, canine, bovine and porcine.

Suitable for use as control antibody for Rosbin siRNA (h): sc-88463, Rosbin siRNA (m): sc-153065, Rosbin shRNA Plasmid (h): sc-88463-SH, Rosbin shRNA Plasmid (m): sc-153065-SH, Rosbin shRNA (h) Lentiviral Particles: sc-88463-V and Rosbin shRNA (m) Lentiviral Particles: sc-153065-V.

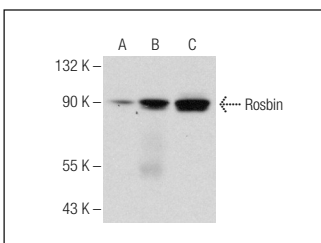
Molecular Weight of Rosbin isoforms: 90/51 kDa.

Positive Controls: MCF7 nuclear extract: sc-2149, HL-60 nuclear extract: sc-2147 or CCRF-CEM nuclear extract: sc-2146.

RECOMMENDED SECONDARY REAGENTS

To ensure optimal results, the following support (secondary) reagents are recommended: 1) Western Blotting: use donkey anti-goat IgG-HRP: sc-2020 (dilution range: 1:2000-1:100,000) or Cruz Marker™ compatible donkey anti-goat IgG-HRP: sc-2033 (dilution range: 1:2000-1:5000), Cruz Marker™ Molecular Weight Standards: sc-2035, TBS Blotto A Blocking Reagent: sc-2333 and Western Blotting Luminol Reagent: sc-2048. 2) Immunoprecipitation: use Protein A/G PLUS-Agarose: sc-2003 (0.5 ml agarose/2.0 ml). 3) Immunofluorescence: use donkey anti-goat IgG-FITC: sc-2024 (dilution range: 1:100-1:400) or donkey anti-goat IgG-TR: sc-2783 (dilution range: 1:100-1:400) with UltraCruz™ Mounting Medium: sc-24941.

DATA



Rosbin (S-12): sc-163312. Western blot analysis of Rosbin expression in MCF7 (A), HL-60 (B) and CCRF-CEM (C) nuclear extracts.

RESEARCH USE

For research use only, not for use in diagnostic procedures.

PROTOCOLS

See our web site at www.scbt.com or our catalog for detailed protocols and support products.