

WDR36 (P-14): sc-163529

BACKGROUND

WD-repeats are motifs that are found in a variety of proteins and are characterized by a conserved core of 40-60 amino acids that commonly form a tertiary propeller structure. While proteins that contain WD-repeats participate in a wide range of cellular functions, they are generally involved in regulatory mechanisms concerning chromatin assembly, cell cycle control, signal transduction, RNA processing, apoptosis and vesicular trafficking. WDR36 (WD-repeat-containing protein 36), also known as GLC1G, UTP21, TAWDRP or TA-WDRP, is a 951 amino acid protein that contains 9 WD-repeats and may be involved in T-cell activation. Expressed in heart, placenta, liver, skeletal muscle, kidney and pancreas, WDR36 is highly co-regulated by IL-2. Defects in the gene encoding WDR36 may be the cause of primary open angle glaucoma type 1G (GLC1G), which is characterized by a specific pattern of optic nerve and visual field defects.

REFERENCES

1. van der Voorn, L. and Ploegh, H.L. 1992. The WD-40 repeat. *FEBS Lett.* 307: 131-134.
2. Neer, E.J., Schmidt, C.J., Nambudripad, R. and Smith, T.F. 1994. The ancient regulatory-protein family of WD-repeat proteins. *Nature* 371: 297-300.
3. Garcia-Higuera, I., Fenoglio, J., Li, Y., Lewis, C., Panchenko, M.P., Reiner, O., Smith, T.F. and Neer, E.J. 1996. Folding of proteins with WD-repeats: comparison of six members of the WD-repeat superfamily to the G protein β subunit. *Biochemistry* 35: 13985-13994.
4. Garcia-Higuera, I., Gaitatzes, C., Smith, T.F. and Neer, E.J. 1998. Folding a WD repeat propeller. Role of highly conserved aspartic acid residues in the G protein β subunit and Sec13. *J. Biol. Chem.* 273: 9041-9049.
5. Li, D. and Roberts, R. 2001. WD-repeat proteins: structure characteristics, biological function, and their involvement in human diseases. *Cell. Mol. Life Sci.* 58: 2085-2097.
6. Blanco-Marchite, C., Sánchez-Sánchez, F., López-Garrido, M.P., Iñíguez-de-Onzoño, M., López-Martínez, F., López-Sánchez, E., Alvarez, L., Rodríguez-Calvo, P.P., Mendez-Hernández, C., et al. 2011. WDR36 and P53 gene variants and susceptibility to primary open-angle glaucoma: analysis of gene-gene interactions. *Invest. Ophthalmol. Vis. Sci.* 52: 8467-8478.

CHROMOSOMAL LOCATION

Genetic locus: WDR36 (human) mapping to 5q22.1; Wdr36 (mouse) mapping to 18 B1.

SOURCE

WDR36 (P-14) is an affinity purified goat polyclonal antibody raised against a peptide mapping near the C-terminus of WDR36 of human origin.

PRODUCT

Each vial contains 200 μ g IgG in 1.0 ml of PBS with < 0.1% sodium azide and 0.1% gelatin.

Blocking peptide available for competition studies, sc-163529 P, (100 μ g peptide in 0.5 ml PBS containing < 0.1% sodium azide and 0.2% BSA).

APPLICATIONS

WDR36 (P-14) is recommended for detection of WDR36 of mouse, rat and human origin by Western Blotting (starting dilution 1:200, dilution range 1:100-1:1000), immunoprecipitation [1-2 μ g per 100-500 μ g of total protein (1 ml of cell lysate)], immunofluorescence (starting dilution 1:50, dilution range 1:50-1:500) and solid phase ELISA (starting dilution 1:30, dilution range 1:30-1:3000); non cross-reactive with other WDR family members.

Suitable for use as control antibody for WDR36 siRNA (h): sc-91824, WDR36 siRNA (m): sc-155278, WDR36 shRNA Plasmid (h): sc-91824-SH, WDR36 shRNA Plasmid (m): sc-155278-SH, WDR36 shRNA (h) Lentiviral Particles: sc-91824-V and WDR36 shRNA (m) Lentiviral Particles: sc-155278-V.

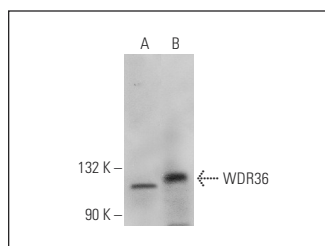
Molecular Weight of WDR36: 105 kDa.

Positive Controls: mouse cerebellum extract: sc-2403 or mouse eye extract: sc-364241.

RECOMMENDED SECONDARY REAGENTS

To ensure optimal results, the following support (secondary) reagents are recommended: 1) Western Blotting: use donkey anti-goat IgG-HRP: sc-2020 (dilution range: 1:2000-1:100,000) or Cruz Marker™ compatible donkey anti-goat IgG-HRP: sc-2033 (dilution range: 1:2000-1:5000), Cruz Marker™ Molecular Weight Standards: sc-2035, TBS Blotto A Blocking Reagent: sc-2333 and Western Blotting Luminol Reagent: sc-2048. 2) Immunoprecipitation: use Protein A/G PLUS-Agarose: sc-2003 (0.5 ml agarose/2.0 ml). 3) Immunofluorescence: use donkey anti-goat IgG-FITC: sc-2024 (dilution range: 1:100-1:400) or donkey anti-goat IgG-TR: sc-2783 (dilution range: 1:100-1:400) with UltraCruz™ Mounting Medium: sc-24941.

DATA



WDR36 (P-14): sc-163529. Western blot analysis of WDR36 expression in mouse eye (A) and mouse cerebellum (B) tissue extracts.

STORAGE

Store at 4° C, **DO NOT FREEZE**. Stable for one year from the date of shipment. Non-hazardous. No MSDS required.

RESEARCH USE

For research use only, not for use in diagnostic procedures.

PROTOCOLS

See our web site at www.scbt.com or our catalog for detailed protocols and support products.