

# ACTL7B (E-16): sc-163637

## BACKGROUND

ACTL7B (Actin-like 7B) is a member of the ARP family of Actin-related proteins that contain an Actin fold and are involved in spindle orientation, nuclear migration and chromatin remodeling events. Localized to the cytoplasm and expressed in the testis and prostate, ACTL7B is 415 amino acids in length and is encoded by a gene that is oriented in a head-to-head formation with the familial dysautonomia (FD) candidate region on chromosome 9. Although located in a region associated with FD, ACTL7B is not involved in the pathogenesis of the genetic disease. ACTL7B shares high sequence similarity with ACTL7A (Actin-like 7A) and contains one conserved protein kinase C (PKC) site and one conserved cAMP/cGMP-dependent phosphorylation site. The human and mouse proteins share 88% sequence similarity.

## CHROMOSOMAL LOCATION

Genetic locus: ACTL7B (human) mapping to 9q31.3; Actl7b (mouse) mapping to 4 B3.

## SOURCE

ACTL7B (E-16) is an affinity purified goat polyclonal antibody raised against a peptide mapping near the C-terminus of ACTL7B of human origin.

## PRODUCT

Each vial contains 200 µg IgG in 1.0 ml of PBS with < 0.1% sodium azide and 0.1% gelatin.

Blocking peptide available for competition studies, sc-163637 P, (100 µg peptide in 0.5 ml PBS containing < 0.1% sodium azide and 0.2% BSA).

## STORAGE

Store at 4° C, **\*\*DO NOT FREEZE\*\***. Stable for one year from the date of shipment. Non-hazardous. No MSDS required.

## APPLICATIONS

ACTL7B (E-16) is recommended for detection of ACTL7B of mouse, rat and human origin by Western Blotting (starting dilution 1:200, dilution range 1:100-1:1000), immunoprecipitation [1-2 µg per 100-500 µg of total protein (1 ml of cell lysate)], immunofluorescence (starting dilution 1:50, dilution range 1:50-1:500) and solid phase ELISA (starting dilution 1:30, dilution range 1:30-1:3000); non cross-reactive with ACTL7A.

ACTL7B (E-16) is also recommended for detection of ACTL7B in additional species, including equine, bovine and porcine.

Suitable for use as control antibody for ACTL7B siRNA (h): sc-92677, ACTL7B siRNA (m): sc-140845, ACTL7B shRNA Plasmid (h): sc-92677-SH, ACTL7B shRNA Plasmid (m): sc-140845-SH, ACTL7B shRNA (h) Lentiviral Particles: sc-92677-V and ACTL7B shRNA (m) Lentiviral Particles: sc-140845-V.

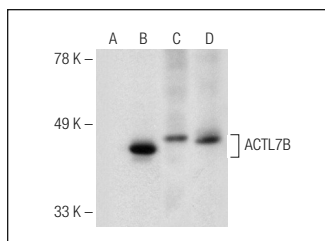
Molecular Weight of ACTL7B: 45 kDa.

Positive Controls: ACTL7B (h): 293T Lysate: sc-115085, mouse prostate extract: sc-364249 or rat testis extract: sc-2400.

## RECOMMENDED SECONDARY REAGENTS

To ensure optimal results, the following support (secondary) reagents are recommended: 1) Western Blotting: use donkey anti-goat IgG-HRP: sc-2020 (dilution range: 1:2000-1:100,000) or Cruz Marker™ compatible donkey anti-goat IgG-HRP: sc-2033 (dilution range: 1:2000-1:5000), Cruz Marker™ Molecular Weight Standards: sc-2035, TBS Blotto A Blocking Reagent: sc-2333 and Western Blotting Luminol Reagent: sc-2048. 2) Immunoprecipitation: use Protein A/G PLUS-Agarose: sc-2003 (0.5 ml agarose/2.0 ml). 3) Immunofluorescence: use donkey anti-goat IgG-FITC: sc-2024 (dilution range: 1:100-1:400) or donkey anti-goat IgG-TR: sc-2783 (dilution range: 1:100-1:400) with UltraCruz™ Mounting Medium: sc-24941.

## DATA



ACTL7B (E-16): sc-163637. Western blot analysis of ACTL7B expression in non-transfected: sc-117752 (A) and human AHCYL1 transfected: sc-115085 (B) 293T whole cell lysates and mouse prostate (C) and rat testis (D) tissue extracts.

## RESEARCH USE

For research use only, not for use in diagnostic procedures.

## PROTOCOLS

See our web site at [www.scbt.com](http://www.scbt.com) or our catalog for detailed protocols and support products.


 MONOS  
Satisfaction  
Guaranteed

Try **ACTL7B (F-1): sc-398446** or **ACTL7B (G-2): sc-514196**, our highly recommended monoclonal alternatives to ACTL7B (E-16).