

# Int-6 (C-20): sc-16370

## BACKGROUND

Int-6, also designated eIF3e, eIF3-p46, eIF3-p48 and eukaryotic translation initiation factor 3, subunit 6, regulates translation and protein degradation through binding with three complexes: the eukaryotic translation initiation factor 3 (eIF3), the proteasome regulatory lid and the constitutive photomorphogenesis 9 signalosome. eIF3 is a complex that mediates assembly of 40S ribosomal subunits on mRNA bearing either a 5'-cap or an internal ribosome entry site (IRES). The Int-6 gene is a site of mouse mammary tumour virus (MMTV) integration in murine tumors. Reducing Int-6 expression by RNA interference in HeLa cells alters mitosis progression through defects in spindle formation, chromosome segregation and cytokinesis. These aberrations appear to correlate with an inhibition of cyclin B-Cdk1 kinase activity, due to a protracted inhibitory phosphorylated state of Cdk1.

## CHROMOSOMAL LOCATION

Genetic locus: EIF3E (human) mapping to 8q23.1; Eif3e (mouse) mapping to 15 B3.2.

## SOURCE

Int-6 (C-20) is an affinity purified goat polyclonal antibody raised against a peptide mapping at the C-terminus of Int-6 of mouse origin.

## PRODUCT

Each vial contains 200 µg IgG in 1.0 ml of PBS with < 0.1% sodium azide and 0.1% gelatin.

Blocking peptide available for competition studies, sc-16370 P, (100 µg peptide in 0.5 ml PBS containing < 0.1% sodium azide and 0.2% BSA).

## RESEARCH USE

For research use only, not for use in diagnostic procedures.

## APPLICATIONS

Int-6 (C-20) is recommended for detection of Int-6 of mouse, rat and human origin by Western Blotting (starting dilution 1:200, dilution range 1:100-1:1000), immunoprecipitation [1-2 µg per 100-500 µg of total protein (1 ml of cell lysate)], immunofluorescence (starting dilution 1:50, dilution range 1:50-1:500) and solid phase ELISA (starting dilution 1:30, dilution range 1:30-1:3000).

Int-6 (C-20) is also recommended for detection of Int-6 in additional species, including equine, canine, bovine, porcine and avian.

Suitable for use as control antibody for Int-6 siRNA (h): sc-40561, Int-6 siRNA (m): sc-40562, Int-6 siRNA (r): sc-270194, Int-6 shRNA Plasmid (h): sc-40561-SH, Int-6 shRNA Plasmid (m): sc-40562-SH, Int-6 shRNA Plasmid (r): sc-270194-SH, Int-6 shRNA (h) Lentiviral Particles: sc-40561-V, Int-6 shRNA (m) Lentiviral Particles: sc-40562-V and Int-6 shRNA (r) Lentiviral Particles: sc-270194-V.

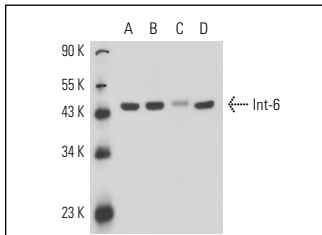
Molecular Weight of Int-6: 48 kDa.

Positive Controls: Jurkat whole cell lysate: sc-2204, NIH/3T3 whole cell lysate: sc-2210 or KNRK whole cell lysate: sc-2214.

## RECOMMENDED SECONDARY REAGENTS

To ensure optimal results, the following support (secondary) reagents are recommended: 1) Western Blotting: use donkey anti-goat IgG-HRP: sc-2020 (dilution range: 1:2000-1:100,000) or Cruz Marker™ compatible donkey anti-goat IgG-HRP: sc-2033 (dilution range: 1:2000-1:5000), Cruz Marker™ Molecular Weight Standards: sc-2035, TBS Blotto A Blocking Reagent: sc-2333 and Western Blotting Luminol Reagent: sc-2048. 2) Immunoprecipitation: use Protein A/G PLUS-Agarose: sc-2003 (0.5 ml agarose/2.0 ml). 3) Immunofluorescence: use donkey anti-goat IgG-FITC: sc-2024 (dilution range: 1:100-1:400) or donkey anti-goat IgG-TR: sc-2783 (dilution range: 1:100-1:400) with UltraCruz™ Mounting Medium: sc-24941.

## DATA



Int-6 (C-20): sc-16370. Western blot analysis of Int-6 expression in Jurkat (A), LADMAC (B), NIH/3T3 (C) and KNRK (D) whole cell lysates.

## SELECT PRODUCT CITATIONS

1. Fujimura, K., et al. 2012. Selenite targets eIF4E-binding protein-1 to inhibit translation initiation and induce the assembly of non-canonical stress granules. *Nucleic Acids Res.* 40: 8099-8110.

## STORAGE

Store at 4° C, \*\*DO NOT FREEZE\*\*. Stable for one year from the date of shipment. Non-hazardous. No MSDS required.

## PROTOCOLS

See our web site at [www.scbt.com](http://www.scbt.com) or our catalog for detailed protocols and support products.

**MONOS**  
Satisfaction  
Guaranteed

Try **Int-6 (A-11): sc-133251** or **Int-6 (H-5): sc-376110**, our highly recommended monoclonal alternatives to Int-6 (C-20).