

# C15orf41 (E-13): sc-163819

## BACKGROUND

Encoding more than 700 genes, chromosome 15 is made up of approximately 106 million base pairs and is about 3% of the human genome. Angelman and Prader-Willi syndromes are associated with loss of function or deletion of genes in the 15q11-q13 region. In the case of Angelman syndrome, this loss is due to inactivity of the maternal 15q11-q13-encoded UBE3A gene in the brain by either chromosomal deletion or mutation. In cases of Prader-Willi syndrome, there is a partial or complete deletion of this region from the paternal copy of chromosome 15. Tay-Sachs disease is a lethal disorder associated with mutations of the HEXA gene, which is encoded by chromosome 15. Marfan syndrome is associated with chromosome 15 through the FBN1 gene. The C15orf41 gene product has been provisionally designated C15orf41 pending further characterization.

## REFERENCES

- Cachón-González, M.B., Wang, S.Z., Lynch, A., Ziegler, R., Cheng, S.H. and Cox, T.M. 2006. Effective gene therapy in an authentic model of Tay-Sachs-related diseases. *Proc. Natl. Acad. Sci. USA* 103: 10373-10378.
- Zody, M.C., Garber, M., Sharpe, T., Young, S.K., Rowen, L., O'Neill, K., Whittaker, C.A., Kamal, M., Chang, J.L., Cuomo, C.A., Dewar, K., Fitzgerald, M.G., Kodira, C.D., Madan, A., Qin, S., Yang, X., et al. 2006. Analysis of the DNA sequence and duplication history of human chromosome 15. *Nature* 440: 671-675.
- Diene, G., Postel-Vinay, A., Pinto, G., Polak, M. and Tauber, M. 2007. The Prader-Willi syndrome. *Ann. Endocrinol.* 68: 129-137.
- Lalande, M. and Calciano, M.A. 2007. Molecular epigenetics of Angelman syndrome. *Cell. Mol. Life Sci.* 64: 947-960.
- Maegawa, G.H., Tropak, M., Buttner, J., Stockley, T., Kok, F., Clarke, J.T. and Mahuran, D.J. 2007. Pyrimethamine as a potential pharmacological chaperone for late-onset forms of GM2 gangliosidosis. *J. Biol. Chem.* 282: 9150-9161.

## CHROMOSOMAL LOCATION

Genetic locus: C15orf41 (human) mapping to 15q14; BC052040 (mouse) mapping to 2 E4.

## SOURCE

C15orf41 (E-13) is an affinity purified goat polyclonal antibody raised against a peptide mapping within an internal region of C15orf41 of human origin.

## PRODUCT

Each vial contains 200 µg IgG in 1.0 ml of PBS with < 0.1% sodium azide and 0.1% gelatin.

Blocking peptide available for competition studies, sc-163819 P, (100 µg peptide in 0.5 ml PBS containing < 0.1% sodium azide and 0.2% BSA).

## STORAGE

Store at 4° C, **\*\*DO NOT FREEZE\*\***. Stable for one year from the date of shipment. Non-hazardous. No MSDS required.

## APPLICATIONS

C15orf41 (E-13) is recommended for detection of C15orf41 of mouse, rat and human origin by Western Blotting (starting dilution 1:200, dilution range 1:100-1:1000), immunoprecipitation [1-2 µg per 100-500 µg of total protein (1 ml of cell lysate)], immunofluorescence (starting dilution 1:50, dilution range 1:50-1:500) and solid phase ELISA (starting dilution 1:30, dilution range 1:30-1:3000); non cross-reactive with other C15orf family members.

C15orf41 (E-13) is also recommended for detection of C15orf41 in additional species, including equine, canine, bovine and porcine.

Suitable for use as control antibody for C15orf41 siRNA (h): sc-90179, C15orf41 siRNA (m): sc-141835, C15orf41 shRNA Plasmid (h): sc-90179-SH, C15orf41 shRNA Plasmid (m): sc-141835-SH, C15orf41 shRNA (h) Lentiviral Particles: sc-90179-V and C15orf41 shRNA (m) Lentiviral Particles: sc-141835-V.

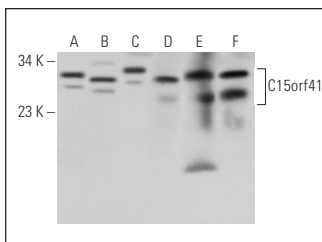
Molecular Weight of C15orf41: 32/21 kDa.

Positive Controls: Hep G2 cell lysate: sc-2227, mouse brain extract: sc-2253 or mouse heart extract: sc-2254.

## RECOMMENDED SECONDARY REAGENTS

To ensure optimal results, the following support (secondary) reagents are recommended: 1) Western Blotting: use donkey anti-goat IgG-HRP: sc-2020 (dilution range: 1:2000-1:100,000) or Cruz Marker™ compatible donkey anti-goat IgG-HRP: sc-2033 (dilution range: 1:2000-1:5000), Cruz Marker™ Molecular Weight Standards: sc-2035, TBS Blotto A Blocking Reagent: sc-2333 and Western Blotting Luminol Reagent: sc-2048. 2) Immunoprecipitation: use Protein A/G PLUS-Agarose: sc-2003 (0.5 ml agarose/2.0 ml). 3) Immunofluorescence: use donkey anti-goat IgG-FITC: sc-2024 (dilution range: 1:100-1:400) or donkey anti-goat IgG-TR: sc-2783 (dilution range: 1:100-1:400) with UltraCruz™ Mounting Medium: sc-24941.

## DATA



C15orf41 (E-13): sc-163819. Western blot analysis of C15orf41 expression in PC-12 (A), Hep G2 (B) and U-251-MG (C) whole cell lysates and mouse liver (D), mouse heart (E) and mouse brain (F) tissue extracts.

## RESEARCH USE

For research use only, not for use in diagnostic procedures.

## PROTOCOLS

See our web site at [www.scbt.com](http://www.scbt.com) or our catalog for detailed protocols and support products.