

C16orf74 (D-15): sc-163828

BACKGROUND

Chromosome 16 encodes over 900 genes in approximately 90 million base pairs, makes up nearly 3% of human cellular DNA and is associated with a variety of genetic disorders. The GAN gene is located on chromosome 16 and, with mutation, may lead to giant axonal neuropathy, a nervous system disorder characterized by increasing malfunction with growth. The rare disorder Rubinstein-Taybi syndrome is also associated with chromosome 16, though through the CREBBP gene which encodes a critical CREB binding protein. Signs of Rubinstein-Taybi include mental retardation and predisposition to tumor growth and white blood cell neoplasias. Crohn's disease is a gastrointestinal inflammatory condition associated with chromosome 16 through the NOD2 gene. An association with systemic lupus erythematosus and a number of other autoimmune disorders with the pericentromeric region of chromosome 16 has led to the identification of SLC5A11 as a potential autoimmune modifier. The C16orf74 gene product has been provisionally designated C16orf74 pending further characterization.

REFERENCES

1. Ben Hamida, C., Cavalier, L., Belal, S., Sanhaji, H., Nadal, N., Barhoumi, C., M'Rissa, N., Marzouki, N., Mandel, J.L., Ben Hamida, M., Koenig, M. and Hentati, F. 1997. Homozygosity mapping of giant axonal neuropathy gene to chromosome 16q24.1. *Neurogenetics* 1: 129-133.
2. Karlsson, J., Zhao, X., Lonskaya, I., Neptin, M., Holmdahl, R. and Andersson, A. 2003. Novel quantitative trait loci controlling development of experimental autoimmune encephalomyelitis and proportion of lymphocyte subpopulations. *J. Immunol.* 170: 1019-1026.
3. Forabosco, P., Gorman, J.D., Cleveland, C., Kelly, J.A., Fisher, S.A., Ortmann, W.A., Johansson, C., Johanneson, B., Moser, K.L., Gaffney, P.M., Tsao, B.P., Cantor, R.M., Alarcón-Riquelme, M.E., Behrens, T.W., Harley, J.B., et al. 2006. Meta-analysis of genome-wide linkage studies of systemic lupus erythematosus. *Genes Immun.* 7: 609-614.
4. Carneiro, L.A., Travassos, L.H. and Girardin, S.E. 2007. Nod-like receptors in innate immunity and inflammatory diseases. *Ann. Med.* 39: 581-593.

CHROMOSOMAL LOCATION

Genetic locus: C16orf74 (human) mapping to 16q24.1; 1190005I06Rik (mouse) mapping to 8 E1.

SOURCE

C16orf74 (D-15) is an affinity purified goat polyclonal antibody raised against a peptide mapping near the N-terminus of C16orf74 of human origin.

PRODUCT

Each vial contains 200 µg IgG in 1.0 ml of PBS with < 0.1% sodium azide and 0.1% gelatin.

Blocking peptide available for competition studies, sc-163828 P, (100 µg peptide in 0.5 ml PBS containing < 0.1% sodium azide and 0.2% BSA).

RESEARCH USE

For research use only, not for use in diagnostic procedures.

APPLICATIONS

C16orf74 (D-15) is recommended for detection of C16orf74 of human origin and 1190005I06Rik of mouse origin by Western Blotting (starting dilution 1:200, dilution range 1:100-1:1000), immunoprecipitation [1-2 µg per 100-500 µg of total protein (1 ml of cell lysate)], immunofluorescence (starting dilution 1:50, dilution range 1:50-1:500) and solid phase ELISA (starting dilution 1:30, dilution range 1:30-1:3000); non cross-reactive with other C16orf family members.

C16orf74 (D-15) is also recommended for detection of C16orf74 in additional species, including canine.

Suitable for use as control antibody for C16orf74 siRNA (h): sc-93064, 1190005I06Rik siRNA (m): sc-108199, C16orf74 shRNA Plasmid (h): sc-93064-SH, 1190005I06Rik shRNA Plasmid (m): sc-108199-SH, C16orf74 shRNA (h) Lentiviral Particles: sc-93064-V and 1190005I06Rik shRNA (m) Lentiviral Particles: sc-108199-V.

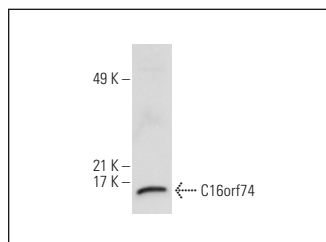
Molecular Weight of C16orf74: 7 kDa.

Positive Controls: L6 whole cell lysate: sc-364196.

RECOMMENDED SECONDARY REAGENTS

To ensure optimal results, the following support (secondary) reagents are recommended: 1) Western Blotting: use donkey anti-goat IgG-HRP: sc-2020 (dilution range: 1:2000-1:100,000) or Cruz Marker™ compatible donkey anti-goat IgG-HRP: sc-2033 (dilution range: 1:2000-1:5000), Cruz Marker™ Molecular Weight Standards: sc-2035, TBS Blotto A Blocking Reagent: sc-2333 and Western Blotting Luminol Reagent: sc-2048. 2) Immunoprecipitation: use Protein A/G PLUS-Agarose: sc-2003 (0.5 ml agarose/2.0 ml). 3) Immunofluorescence: use donkey anti-goat IgG-FITC: sc-2024 (dilution range: 1:100-1:400) or donkey anti-goat IgG-TR: sc-2783 (dilution range: 1:100-1:400) with UltraCruz™ Mounting Medium: sc-24941.

DATA



C16orf74 (D-15): sc-163828. Western blot analysis of C16orf74 expression in L6 whole cell lysate.

STORAGE

Store at 4° C, **DO NOT FREEZE**. Stable for one year from the date of shipment. Non-hazardous. No MSDS required.

PROTOCOLS

See our web site at www.scbt.com or our catalog for detailed protocols and support products.