

LURAP1 (S-14): sc-163873

BACKGROUND

LURAP1 (leucine rich adaptor protein 1), also known as LRP35A (leucine repeat adapter protein 35A) or LRAP35A, is a 239 amino acid cytoplasmic protein that activates the NF κ B pathway and contains two LRR (leucine-rich) repeats. LURAP is implicated in the production of proinflammatory cytokines and forms a tripartite complex with MRCK α , MRCK and Myosin XVIIIa. This complex has the ability to influence lamellar actomyosin retrograde flow, thereby effecting cell protrusion and migration. LURAP1 is encoded by a gene that maps to human chromosome 1, which spans 260 million base pairs, contains over 3,000 genes and comprises nearly 8% of the human genome. Chromosome 1 houses a large number of disease-associated genes, including those that are involved in familial adenomatous polyposis, Stickler syndrome, Parkinson's disease, Gaucher disease and schizophrenia.

REFERENCES

- Dobbie, Z., Heinimann, K., Bishop, D.T., Müller, H. and Scott, R.J. 1997. Identification of a modifier gene locus on chromosome 1p35-36 in familial adenomatous polyposis. *Hum. Genet.* 99: 653-657.
- Lau, E.K., Tayebi, N., Ingraham, L.J., Winfield, S.L., Koprivica, V., Stone, D.L., Zimran, A., Ginns, E.I. and Sidransky, E. 1999. Two novel polymorphic sequences in the glucocerebrosidase gene region enhance mutational screening and founder effect studies of patients with Gaucher disease. *Hum. Genet.* 104: 293-300.
- Plasilova, M., Russell, A.M., Wanner, A., Wolf, A., Dobbie, Z., Müller, H.J. and Heinimann, K. 2004. Exclusion of an extracolonic disease modifier locus on chromosome 1p33-36 in a large Swiss familial adenomatous polyposis kindred. *Eur. J. Hum. Genet.* 12: 365-371.
- Oliveira, S.A., Li, Y.J., Noureddine, M.A., Zuchner, S., Qin, X., Pericak-Vance, M.A. and Vance, J.M. 2005. Identification of risk and age-at-onset genes on chromosome 1p in Parkinson disease. *Am. J. Hum. Genet.* 77: 252-264.
- Tan, I., Yong, J., Dong, J.M., Lim, L. and Leung, T. 2008. A tripartite complex containing MRCK modulates lamellar actomyosin retrograde flow. *Cell* 135: 123-136.

CHROMOSOMAL LOCATION

Genetic locus: LURAP1 (human) mapping to 1p34.1; Lurap1 (mouse) mapping to 4 D1.

SOURCE

LURAP1 (S-14) is an affinity purified goat polyclonal antibody raised against a peptide mapping within an internal region of LURAP1 of human origin.

PRODUCT

Each vial contains 200 μ g IgG in 1.0 ml of PBS with < 0.1% sodium azide and 0.1% gelatin.

Blocking peptide available for competition studies, sc-163873 P, (100 μ g peptide in 0.5 ml PBS containing < 0.1% sodium azide and 0.2% BSA).

APPLICATIONS

LURAP1 (S-14) is recommended for detection of LURAP1 of mouse, rat and human origin by Western Blotting (starting dilution 1:200, dilution range 1:100-1:1000), immunoprecipitation [1-2 μ g per 100-500 μ g of total protein (1 ml of cell lysate)], immunofluorescence (starting dilution 1:50, dilution range 1:50-1:500) and solid phase ELISA (starting dilution 1:30, dilution range 1:30-1:3000).

LURAP1 (S-14) is also recommended for detection of LURAP1 in additional species, including equine and canine.

Suitable for use as control antibody for LURAP1 siRNA (h): sc-78645, LURAP1 siRNA (m): sc-108247, LURAP1 shRNA Plasmid (h): sc-78645-SH, LURAP1 shRNA Plasmid (m): sc-108247-SH, LURAP1 shRNA (h) Lentiviral Particles: sc-78645-V and LURAP1 shRNA (m) Lentiviral Particles: sc-108247-V.

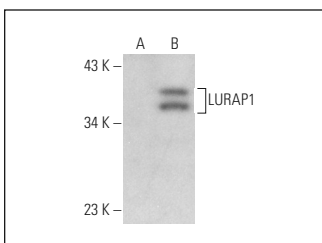
Molecular Weight of LURAP1: 26 kDa.

Positive Controls: C1orf190 (h2): 293T Lysate: sc-374905.

RECOMMENDED SECONDARY REAGENTS

To ensure optimal results, the following support (secondary) reagents are recommended: 1) Western Blotting: use donkey anti-goat IgG-HRP: sc-2020 (dilution range: 1:2000-1:100,000) or Cruz Marker™ compatible donkey anti-goat IgG-HRP: sc-2033 (dilution range: 1:2000-1:5000), Cruz Marker™ Molecular Weight Standards: sc-2035, TBS Blotto A Blocking Reagent: sc-2333 and Western Blotting Luminol Reagent: sc-2048. 2) Immunoprecipitation: use Protein A/G PLUS-Agarose: sc-2003 (0.5 ml agarose/2.0 ml). 3) Immunofluorescence: use donkey anti-goat IgG-FITC: sc-2024 (dilution range: 1:100-1:400) or donkey anti-goat IgG-TR: sc-2783 (dilution range: 1:100-1:400) with UltraCruz™ Mounting Medium: sc-24941.

DATA



LURAP1 (S-14): sc-163873. Western blot analysis of LURAP1 expression in non-transfected: sc-117752 (A) and human C1orf190 transfected: sc-374905 (B) 293T whole cell lysates.

STORAGE

Store at 4° C, **DO NOT FREEZE**. Stable for one year from the date of shipment. Non-hazardous. No MSDS required.

RESEARCH USE

For research use only, not for use in diagnostic procedures.