

C9orf16 (N-13): sc-163955

BACKGROUND

C9orf16 (chromosome 9 open reading frame 16) is an 83 amino acid protein that belongs to the UPF0184 (EST00098) family and is encoded by a gene that maps to human chromosome 9q34.11. Chromosome 9 consists of about 145 million bases, represents 4% of the human genome and encodes nearly 900 genes. Thought to play a role in gender determination, deletion of the distal portion of 9p can lead to development of male to female sex reversal, the phenotype of a female with a male X,Y genotype. Hereditary hemorrhagic telangiectasia, which is characterized by harmful vascular defects, is associated with the chromosome 9 gene encoding endoglin protein, ENG. Familial dysautonomia is also associated with chromosome 9 though through the gene IKBKAP. Notably, chromosome 9 encompasses the largest interferon family gene cluster. Chromosome 9 is partnered with chromosome 22 in the translocation leading to the aberrant production of Bcr-Abl fusion protein often found in leukemias.

REFERENCES

- Humphray, S.J., Oliver, K., Hunt, A.R., Plumb, R.W., Loveland, J.E., Howe, K.L., Andrews, T.D., Searle, S., Hunt, S.E., Scott, C.E., Jones, M.C., Ainscough, R., Almeida, J.P., Ambrose, K.D., Ashwell, R.I., et al. 2004. DNA sequence and analysis of human chromosome 9. *Nature* 429: 369-374.
- Coppo, P., Flamant, S., De Mas, V., Jarrier, P., Guillier, M., Bonnet, M.L., Lacout, C., Guilhot, F., Vainchenker, W. and Turhan, A.G. 2006. Bcr-Abl activates Stat3 via JAK and MEK pathways in human cells. *Br. J. Haematol.* 134: 171-179.
- Zheng, X., Güller, S., Beissert, T., Puccetti, E. and Ruthardt, M. 2006. Bcr and its mutants, the reciprocal t(9;22)-associated Abl/Bcr fusion proteins, differentially regulate the cytoskeleton and cell motility. *BMC Cancer* 7: 262.
- Burmeister, T., Schwartz, S., Taubald, A., Jost, E., Lipp, T., Schneller, F., Diedrich, H., Thomssen, H., Mey, U.J., Eucker, J., Rieder, H., Gökbuegt, N., Hoelzer, D. and Thiel E. 2007. Atypical Bcr-Abl mRNA transcripts in adult acute lymphoblastic leukemia. *Haematologica* 92: 1699-1702.
- Cottin, V., Dupuis-Girod, S., Lesca, G. and Cordier, J.F. 2007. Pulmonary vascular manifestations of hereditary hemorrhagic telangiectasia (rendu-osler disease). *Respiration* 74: 361-378.

CHROMOSOMAL LOCATION

Genetic locus: C9orf16 (human) mapping to 9q34.11; 1110008P14Rik (mouse) mapping to 2 B.

SOURCE

C9orf16 (N-13) is an affinity purified goat polyclonal antibody raised against a peptide mapping at the N-terminus of C9orf16 of human origin.

PRODUCT

Each vial contains 200 µg IgG in 1.0 ml of PBS with < 0.1% sodium azide and 0.1% gelatin.

Blocking peptide available for competition studies, sc-163955 P, (100 µg peptide in 0.5 ml PBS containing < 0.1% sodium azide and 0.2% BSA).

APPLICATIONS

C9orf16 (N-13) is recommended for detection of C9orf16 of mouse, rat and human origin by Western Blotting (starting dilution 1:200, dilution range 1:100-1:1000), immunoprecipitation [1-2 µg per 100-500 µg of total protein (1 ml of cell lysate)], immunofluorescence (starting dilution 1:50, dilution range 1:50-1:500) and solid phase ELISA (starting dilution 1:30, dilution range 1:30-1:3000); non cross-reactive with other C9orf family members.

C9orf16 (N-13) is also recommended for detection of C9orf16 in additional species, including equine, canine and bovine.

Suitable for use as control antibody for C9orf16 siRNA (h): sc-92859, C9orf16 siRNA (m): sc-141952, C9orf16 shRNA Plasmid (h): sc-92859-SH, C9orf16 shRNA Plasmid (m): sc-141952-SH, C9orf16 shRNA (h) Lentiviral Particles: sc-92859-V and C9orf16 shRNA (m) Lentiviral Particles: sc-141952-V.

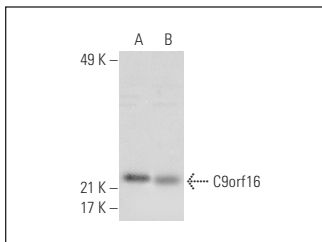
Molecular Weight of C9orf16: 9 kDa.

Positive Controls: HEK293 whole cell lysate: sc-45136 or HeLa whole cell lysate: sc-2200.

RECOMMENDED SECONDARY REAGENTS

To ensure optimal results, the following support (secondary) reagents are recommended: 1) Western Blotting: use donkey anti-goat IgG-HRP: sc-2020 (dilution range: 1:2000-1:100,000) or Cruz Marker™ compatible donkey anti-goat IgG-HRP: sc-2033 (dilution range: 1:2000-1:5000), Cruz Marker™ Molecular Weight Standards: sc-2035, TBS Blotto A Blocking Reagent: sc-2333 and Western Blotting Luminol Reagent: sc-2048. 2) Immunoprecipitation: use Protein A/G PLUS-Agarose: sc-2003 (0.5 ml agarose/2.0 ml). 3) Immunofluorescence: use donkey anti-goat IgG-FITC: sc-2024 (dilution range: 1:100-1:400) or donkey anti-goat IgG-TR: sc-2783 (dilution range: 1:100-1:400) with UltraCruz™ Mounting Medium: sc-24941.

DATA



C9orf16 (N-13): sc-163955. Western blot analysis of C9orf16 expression in HEK293 (A) and HeLa (B) whole cell lysates.

STORAGE

Store at 4° C, **DO NOT FREEZE**. Stable for one year from the date of shipment. Non-hazardous. No MSDS required.

RESEARCH USE

For research use only, not for use in diagnostic procedures.