

Cdc50B (Y-12): sc-164015

BACKGROUND

Cdc50B (cell cycle control protein 50B), also known as TMEM30B (transmembrane protein 30B), is a 351 amino acid multi-pass membrane protein that belongs to the CDC50/LEM3 family. The gene that encodes Cdc50B consists of approximately 4,443 bases and maps to human chromosome 14q23.1. Housing over 700 genes, chromosome 14 comprises nearly 3.5% of the human genome. Chromosome 14 encodes the Presenilin 1 (PSEN1) gene, which is one of the three key genes associated with the development of Alzheimer's disease. The SERPINA1 gene is also located on chromosome 14 and, when defective, leads to the genetic disorder α 1-antitrypsin deficiency, which is characterized by severe lung complications and liver dysfunction. An inversion of the long arm of chromosome 14 is thought to be involved in T-cell chronic lymphocytic leukemia (CLL), a cancer that affects T lymphocytes.

REFERENCES

- Zech, L., et al. 1984. Inversion of chromosome 14 marks human T-cell chronic lymphocytic leukaemia. *Nature* 308: 858-860.
- Aisenberg, A.C., et al. 1985. Rearrangement of the gene for the β chain of the T-cell receptor in T-cell chronic lymphocytic leukemia and related disorders. *N. Engl. J. Med.* 313: 529-533.
- Schellenberg, G.D., et al. 1992. Genetic linkage evidence for a familial Alzheimer's disease locus on chromosome 14. *Science* 258: 668-671.
- Katoh, Y. and Katoh, M. 2004. Identification and characterization of CDC50A, CDC50B and CDC50C genes in silico. *Oncol. Rep.* 12: 939-943.
- Avramopoulos, D., et al. 2005. Linkage to chromosome 14q in Alzheimer's disease (AD) patients without psychotic symptoms. *Am. J. Med. Genet. B Neuropsychiatr. Genet.* 132B: 9-13.
- Online Mendelian Inheritance in Man, OMIM™. 2007. Johns Hopkins University, Baltimore, MD. MIM Number: 611029. World Wide Web URL: <http://www.ncbi.nlm.nih.gov/omim/>
- Lamer, A.J. and Doran, M. 2009. Genotype-phenotype relationships of presenilin-1 mutations in Alzheimer's disease: an update. *J. Alzheimers Dis.* 17: 259-265.

CHROMOSOMAL LOCATION

Genetic locus: TMEM30B (human) mapping to 14q23.1; Tmem30b (mouse) mapping to 12 C3.

SOURCE

Cdc50B (Y-12) is an affinity purified goat polyclonal antibody raised against a peptide mapping within an internal region of Cdc50B of human origin.

STORAGE

Store at 4° C, ****DO NOT FREEZE****. Stable for one year from the date of shipment. Non-hazardous. No MSDS required.

PROTOCOLS

See our web site at www.scbt.com or our catalog for detailed protocols and support products.

PRODUCT

Each vial contains 200 μ g IgG in 1.0 ml of PBS with < 0.1% sodium azide and 0.1% gelatin.

Blocking peptide available for competition studies, sc-164015 P, (100 μ g peptide in 0.5 ml PBS containing < 0.1% sodium azide and 0.2% BSA).

APPLICATIONS

Cdc50B (Y-12) is recommended for detection of Cdc50B of mouse, rat and human origin by Western Blotting (starting dilution 1:200, dilution range 1:100-1:1000), immunoprecipitation [1-2 μ g per 100-500 μ g of total protein (1 ml of cell lysate)], immunofluorescence (starting dilution 1:50, dilution range 1:50-1:500) and solid phase ELISA (starting dilution 1:30, dilution range 1:30-1:3000); non cross-reactive with Cdc50A or Cdc50C.

Cdc50B (Y-12) is also recommended for detection of Cdc50B in additional species, including bovine and porcine.

Suitable for use as control antibody for Cdc50B siRNA (h): sc-92313, Cdc50B siRNA (m): sc-142216, Cdc50B shRNA Plasmid (h): sc-92313-SH, Cdc50B shRNA Plasmid (m): sc-142216-SH, Cdc50B shRNA (h) Lentiviral Particles: sc-92313-V and Cdc50B shRNA (m) Lentiviral Particles: sc-142216-V.

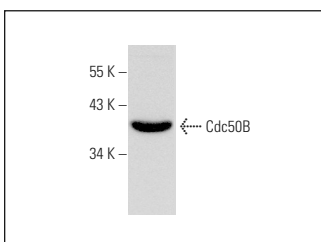
Molecular Weight of Cdc50B: 39 kDa.

Positive Controls: human liver extract: sc-363766.

RECOMMENDED SECONDARY REAGENTS

To ensure optimal results, the following support (secondary) reagents are recommended: 1) Western Blotting: use donkey anti-goat IgG-HRP: sc-2020 (dilution range: 1:2000-1:100,000) or Cruz Marker™ compatible donkey anti-goat IgG-HRP: sc-2033 (dilution range: 1:2000-1:5000), Cruz Marker™ Molecular Weight Standards: sc-2035, TBS Blotto A Blocking Reagent: sc-2333 and Western Blotting Luminol Reagent: sc-2048. 2) Immunoprecipitation: use Protein A/G PLUS-Agarose: sc-2003 (0.5 ml agarose/2.0 ml). 3) Immunofluorescence: use donkey anti-goat IgG-FITC: sc-2024 (dilution range: 1:100-1:400) or donkey anti-goat IgG-TR: sc-2783 (dilution range: 1:100-1:400) with UltraCruz™ Mounting Medium: sc-24941.

DATA



Cdc50B (Y-12): sc-164015. Western blot analysis of Cdc50B expression in human liver tissue extract.

RESEARCH USE

For research use only, not for use in diagnostic procedures.