

Dexas1/2 (C-20): sc-16404

BACKGROUND

Dexas1 (RASD1; RAS, dexamethasone-induced 1) is a steroid hormone-dependent, Ras-related GTPase that influences cell morphology, growth, and cell-extracellular matrix interactions. Dexas1 can regulate receptor-mediated $G_{\beta/\gamma}$ (heterotrimeric G protein) signaling. Dexas1 couples NMDA and light input to $G_{i/o}$ and ERK activation. Dexas2 (Rhes; Ras homolog enriched in striatum, RASD2; RAS, dexamethasone-induced 2, TEM2; tumor endothelial marker 2) is a GTPase that is abundant in the striatal region of the brain where it mediates signal cascades. Dexas2 (Rhes) mRNA levels are under the influence of dopamine and may play a role in determining normal dopamine receptor sensitivity. Dexas1 and Dexas2 (Rhes) define a subfamily of proteins within the Ras family, characterized by an extended variable domain in the carboxyl terminal region.

REFERENCES

1. Kemppainen, R.J. and Behrend, E.N. 1998. Dexamethasone rapidly induces a novel ras superfamily member-related gene in AtT-20 cells. *J. Biol. Chem.* 273: 3129-3131.
2. Falk, J.D., et al. 1999. Rhes: a striatal-specific Ras homolog related to Dexas1. *J. Neurosci. Res.* 57: 782-788.

CHROMOSOMAL LOCATION

Genetic locus: RASD1 (human) mapping to 17p11.2, RASD2 (human) mapping to 22q12.3; Rasd1 (mouse) mapping to 11 B1.3, Rasd2 (mouse) mapping to 8 C1.

SOURCE

Dexas1/2 (C-20) is an affinity purified goat polyclonal antibody raised against a peptide mapping near the C-terminus of Dexas2 of human origin.

PRODUCT

Each vial contains 200 μ g IgG in 1.0 ml of PBS with < 0.1% sodium azide and 0.1% gelatin.

Blocking peptide available for competition studies, sc-16404 P, (100 μ g peptide in 0.5 ml PBS containing < 0.1% sodium azide and 0.2% BSA).

APPLICATIONS

Dexas1/2 (C-20) is recommended for detection of Dexas1 and Dexas2 of mouse, rat and human origin by Western Blotting (starting dilution 1:200, dilution range 1:100-1:1000), immunoprecipitation [1-2 μ g per 100-500 μ g of total protein (1 ml of cell lysate)], immunofluorescence (starting dilution 1:50, dilution range 1:50-1:500), immunohistochemistry (including paraffin-embedded sections) (starting dilution 1:50, dilution range 1:50-1:500) and solid phase ELISA (starting dilution 1:30, dilution range 1:30-1:3000).

Dexas1/2 (C-20) is also recommended for detection of Dexas1 and Dexas2 in additional species, including equine, canine, bovine and avian.

Molecular Weight of Dexas1: 32 kDa.

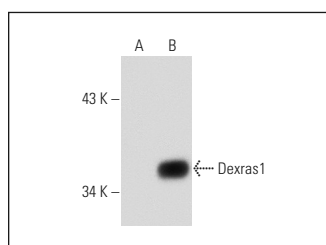
Molecular Weight of Dexas2: 30 kDa.

Positive Controls: Dexas1 (h): 293 Lysate: sc-128448.

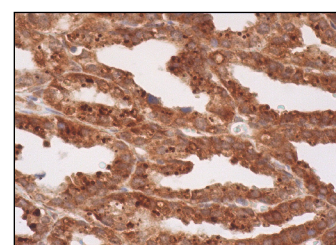
RECOMMENDED SECONDARY REAGENTS

To ensure optimal results, the following support (secondary) reagents are recommended: 1) Western Blotting: use donkey anti-goat IgG-HRP: sc-2020 (dilution range: 1:2000-1:100,000) or Cruz Marker[™] compatible donkey anti-goat IgG-HRP: sc-2033 (dilution range: 1:2000-1:5000), Cruz Marker[™] Molecular Weight Standards: sc-2035, TBS Blotto A Blocking Reagent: sc-2333 and Western Blotting Luminol Reagent: sc-2048. 2) Immunoprecipitation: use Protein A/G PLUS-Agarose: sc-2003 (0.5 ml agarose/2.0 ml). 3) Immunofluorescence: use donkey anti-goat IgG-FITC: sc-2024 (dilution range: 1:100-1:400) or donkey anti-goat IgG-TR: sc-2783 (dilution range: 1:100-1:400) with UltraCruz[™] Mounting Medium: sc-24941. 4) Immunohistochemistry: use ImmunoCruz[™]: sc-2053 or ABC: sc-2023 goat IgG Staining Systems.

DATA



Dexas1/2 (C-20): sc-16404. Western blot analysis of Dexas1 expression in non-transfected: sc-110760 (A) and human Dexas1 transfected: sc-128448 (B) 293 whole cell lysates.



Dexas1/2 (C-20): sc-16404. Immunoperoxidase staining of formalin fixed, paraffin-embedded human seminal vesicle tissue showing cytoplasmic staining of glandular cells.

SELECT PRODUCT CITATIONS

1. Li, X., et al. 2008. Spatiotemporal expression of Dexas1 after spinal cord transection in rats. *Cell. Mol. Neurobiol.* 28: 371-388.

STORAGE

Store at 4° C, **DO NOT FREEZE**. Stable for one year from the date of shipment. Non-hazardous. No MSDS required.

RESEARCH USE

For research use only, not for use in diagnostic procedures.

PROTOCOLS

See our web site at www.scbt.com or our catalog for detailed protocols and support products.

MONOS
Satisfaction
Guaranteed

Try **Dexas1/2 (C-11): sc-398988**, our highly recommended monoclonal alternative to Dexas1/2 (C-20).