

CRLF3 (N-15): sc-164122

BACKGROUND

CRLF3 (cytokine receptor-like factor 3), also known as type I cytokine receptor like factor, FRWS, CREME9 (cytokine receptor-like molecule 9), CYTOR4 (cytokine receptor-related protein 4) or P48 (type I cytokine receptor-like factor p48), is a 442 amino acid protein that contains one fibronectin type-III domain. CRLF3 is expressed in lesion actinic keratosis (AK) and skin and squamous cell carcinoma (SCC), and is thought to negatively regulate the G₀/G₁ phase of the cell cycle. The gene encoding CRLF3 maps to human chromosome 17, which comprises over 2.5% of the human genome and encodes over 1,200 genes. Two key tumor suppressor genes are associated with chromosome 17, namely, p53 and BRCA1. Malfunction or loss of p53 expression is associated with malignant cell growth and Li-Fraumeni syndrome. Like p53, BRCA1 is directly involved in DNA repair and is recognized as a genetic determinant of early onset breast cancer and predisposition to cancers of the ovary, colon, prostate gland and fallopian tubes.

CHROMOSOMAL LOCATION

Genetic locus: CRLF3 (human) mapping to 17q11.2; Crlf3 (mouse) mapping to 11 B5.

SOURCE

CRLF3 (N-15) is an affinity purified goat polyclonal antibody raised against a peptide mapping near the N-terminus of CRLF3 of human origin.

PRODUCT

Each vial contains 200 µg IgG in 1.0 ml of PBS with < 0.1% sodium azide and 0.1% gelatin.

Blocking peptide available for competition studies, sc-164122 P, (100 µg peptide in 0.5 ml PBS containing < 0.1% sodium azide and 0.2% BSA).

STORAGE

Store at 4° C, ****DO NOT FREEZE****. Stable for one year from the date of shipment. Non-hazardous. No MSDS required.

APPLICATIONS

CRLF3 (N-15) is recommended for detection of CRLF3 of mouse, rat and human origin by Western Blotting (starting dilution 1:200, dilution range 1:100-1:1000), immunoprecipitation [1-2 µg per 100-500 µg of total protein (1 ml of cell lysate)], immunofluorescence (starting dilution 1:50, dilution range 1:50-1:500) and solid phase ELISA (starting dilution 1:30, dilution range 1:30-1:3000); non cross-reactive with CRLF1 or CRLF2.

CRLF3 (N-15) is also recommended for detection of CRLF3 in additional species, including canine, bovine and porcine.

Suitable for use as control antibody for CRLF3 siRNA (h): sc-94066, CRLF3 siRNA (m): sc-142577, CRLF3 shRNA Plasmid (h): sc-94066-SH, CRLF3 shRNA Plasmid (m): sc-142577-SH, CRLF3 shRNA (h) Lentiviral Particles: sc-94066-V and CRLF3 shRNA (m) Lentiviral Particles: sc-142577-V.

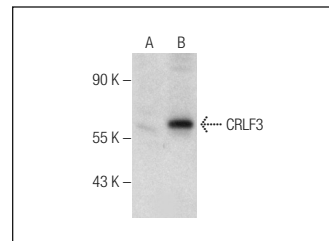
Molecular Weight of CRLF3: 50 kDa.

Positive Controls: CRLF3 (h): 293T Lysate: sc-370881.

RECOMMENDED SECONDARY REAGENTS

To ensure optimal results, the following support (secondary) reagents are recommended: 1) Western Blotting: use donkey anti-goat IgG-HRP: sc-2020 (dilution range: 1:2000-1:100,000) or Cruz Marker™ compatible donkey anti-goat IgG-HRP: sc-2033 (dilution range: 1:2000-1:5000), Cruz Marker™ Molecular Weight Standards: sc-2035, TBS Blotto A Blocking Reagent: sc-2333 and Western Blotting Luminol Reagent: sc-2048. 2) Immunoprecipitation: use Protein A/G PLUS-Agarose: sc-2003 (0.5 ml agarose/2.0 ml). 3) Immunofluorescence: use donkey anti-goat IgG-FITC: sc-2024 (dilution range: 1:100-1:400) or donkey anti-goat IgG-TR: sc-2783 (dilution range: 1:100-1:400) with UltraCruz™ Mounting Medium: sc-24941.

DATA



CRLF3 (N-15): sc-164122. Western blot analysis of CRLF3 expression in non-transfected: sc-117752 (A) and human CRLF3 transfected: sc-370881 (B) 293T whole cell lysates.

RESEARCH USE

For research use only, not for use in diagnostic procedures.

PROTOCOLS

See our web site at www.scbt.com or our catalog for detailed protocols and support products.

MONOS
Satisfaction
Guaranteed

Try **CRLF3 (D-10): sc-398388**, our highly recommended monoclonal alternative to CRLF3 (N-15).