

# GS188 (D-15): sc-164559

## BACKGROUND

GS188 (transmembrane protein 176A), also known as hepatocellular carcinoma-associated antigen 112, Keg2, AU040201, AU041743, HCA112, 06100-11104Rik or TMEM176A, is a 235 amino acid multi-pass membrane protein belonging to the TMEM176 family. The gene encoding GS188 maps to human chromosome 7, which houses over 1,000 genes and comprises nearly 5% of the human genome. Chromosome 7 has been linked to Osteogenesis imperfecta, Pendred syndrome, Lissencephaly, Citrullinemia and Shwachman-Diamond syndrome. The deletion of a portion of the q arm of chromosome 7 is associated with Williams-Beuren syndrome, a condition characterized by mild mental retardation, an unusual comfirt and friendliness with strangers and an elfin appearance. Deletions of portions of the q arm of chromosome 7 are also seen in a number of myeloid disorders including cases of acute myelogenous leukemia and myelodysplasia.

## REFERENCES

1. Tsiouras, P., et al. 1983. Restriction fragment length polymorphism associated with the pro  $\alpha$  2(I) gene of human type I procollagen. Application to a family with an autosomal dominant form of osteogenesis imperfecta. *J. Clin. Invest.* 72: 1262-1267.
2. Liang, H., et al. 1998. Molecular anatomy of chromosome 7q deletions in myeloid neoplasms: evidence for multiple critical loci. *Proc. Natl. Acad. Sci. USA* 95: 3781-3785.
3. Ko, M.S., et al. 2000. Large-scale cDNA analysis reveals phased gene expression patterns during preimplantation mouse development. *Development* 127: 1737-1749.
4. Eckert, M.A., et al. 2006. The neurobiology of Williams syndrome: cascading influences of visual system impairment? *Cell. Mol. Life Sci.* 63: 1867-1875.
5. Osborne, L.R., et al. 2006. Williams-Beuren syndrome diagnosis using fluorescence *in situ* hybridization. *Methods Mol. Med.* 126: 113-128.
6. Reiner, O., et al. 2006. Lissencephaly 1 linking to multiple diseases: mental retardation, neurodegeneration, schizophrenia, male sterility, and more. *Neuromolecular Med.* 8: 547-565.
7. Gilbert-Dussardier, B. 2006. Williams-Beuren syndrome. *Rev. Prat.* 56: 2102-2106.
8. Leone, G., et al. 2007. Therapy-related leukemia and myelodysplasia: susceptibility and incidence. *Haematologica* 92: 1389-1398.

## CHROMOSOMAL LOCATION

Genetic locus: Tmem176a (mouse) mapping to 6 B2.3.

## SOURCE

GS188 (D-15) is an affinity purified goat polyclonal antibody raised against a peptide mapping near the N-terminus of GS188 of mouse origin.

## STORAGE

Store at 4° C, **\*\*DO NOT FREEZE\*\***. Stable for one year from the date of shipment. Non-hazardous. No MSDS required.

## PRODUCT

Each vial contains 200  $\mu$ g IgG in 1.0 ml of PBS with < 0.1% sodium azide and 0.1% gelatin.

Blocking peptide available for competition studies, sc-164559 P, (100  $\mu$ g peptide in 0.5 ml PBS containing < 0.1% sodium azide and 0.2% BSA).

## APPLICATIONS

GS188 (D-15) is recommended for detection of GS188 of mouse and rat origin by Western Blotting (starting dilution 1:200, dilution range 1:100-1:1000), immunoprecipitation [1-2  $\mu$ g per 100-500  $\mu$ g of total protein (1 ml of cell lysate)], immunofluorescence (starting dilution 1:50, dilution range 1:50-1:500) and solid phase ELISA (starting dilution 1:30, dilution range 1:30-1:3000); non cross-reactive with LR8.

Suitable for use as control antibody for GS188 siRNA (m): sc-145790, GS188 shRNA Plasmid (m): sc-145790-SH and GS188 shRNA (m) Lentiviral Particles: sc-145790-V.

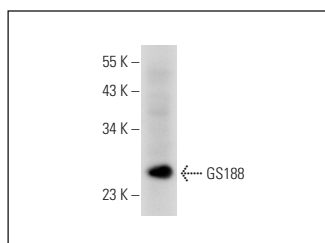
Molecular Weight of GS188: 26 kDa.

Positive Controls: mouse liver extract: sc-2256.

## RECOMMENDED SECONDARY REAGENTS

To ensure optimal results, the following support (secondary) reagents are recommended: 1) Western Blotting: use donkey anti-goat IgG-HRP: sc-2020 (dilution range: 1:2000-1:100,000) or Cruz Marker™ compatible donkey anti-goat IgG-HRP: sc-2033 (dilution range: 1:2000-1:5000), Cruz Marker™ Molecular Weight Standards: sc-2035, TBS Blotto A Blocking Reagent: sc-2333 and Western Blotting Luminol Reagent: sc-2048. 2) Immunoprecipitation: use Protein A/G PLUS-Agarose: sc-2003 (0.5 ml agarose/2.0 ml). 3) Immunofluorescence: use donkey anti-goat IgG-FITC: sc-2024 (dilution range: 1:100-1:400) or donkey anti-goat IgG-TR: sc-2783 (dilution range: 1:100-1:400) with UltraCruz™ Mounting Medium: sc-24941.

## DATA



GS188 (D-15): sc-164559. Western blot analysis of GS188 expression in mouse liver tissue extract.

## RESEARCH USE

For research use only, not for use in diagnostic procedures.

## PROTOCOLS

See our web site at [www.scbt.com](http://www.scbt.com) or our catalog for detailed protocols and support products.