

LMP2 (C-20): sc-16461

BACKGROUND

The eukaryotic multicatalytic proteinase complex, otherwise known as the proteasome, is present in both the nucleus and cytoplasm of cells and contains at least 15 nonidentical subunits, which form a highly ordered ring-shaped structure. The proteasome is involved in an ATP/ubiquitin-dependent proteolytic pathway and expresses at least five distinct proteolytic activities, including the cleavage of peptides after branched chain amino acids or bulky hydrophobic amino acids. Two components of the proteasome are the low molecular mass proteins LMP2 and LMP7, which are thought to connect the proteasome to the MHC class-I antigen-processing pathway. Upon stimulation with IFN- γ , LMP2 and LMP7 displace housekeeping subunits in the proteasome and activate cytotoxic T cells (CTLs). LMP2 and LMP7 are produced as precursor proteins, which are processed to subunits that have the ability to complex with the proteasome. LMP2 is expressed as two alternatively spliced forms, LMP2.l and LMP2.s, in lymphoblastoid cell lines and in fibroblasts after IFN- γ stimulation. LMP7 is also expressed as two forms, LMP7-E1 and -E2, in several tissues.

REFERENCES

1. Fruh, K., et al. 1992. Alternative exon usage and processing of the major histocompatibility complex-encoded proteasome subunits. *J. Biol. Chem.* 267: 22131-22140.
2. Glynne, R., et al. 1993. The major histocompatibility complex-encoded proteasome component LMP7: alternative first exons and post-translational processing. *Eur. J. Immunol.* 23: 860-866.
3. Cardozo, C. 1993. Catalytic components of the bovine pituitary multicatalytic proteinase complex (proteasome). *Enzyme Protein* 47: 296-305.
4. Frentzel, S., et al. 1993. The major-histocompatibility-complex-encoded β -type proteasome subunits LMP2 and LMP7. Evidence that LMP2 and LMP7 are synthesized as proproteins and that cellular levels of both mRNA and LMP-containing 20S proteasomes are differentially regulated. *Eur. J. Biochem.* 216: 119-126.

CHROMOSOMAL LOCATION

Genetic locus: PSMB9 (human) mapping to 6p21.32; Psmb9 (mouse) mapping to 17 B1.

SOURCE

LMP2 (C-20) is an affinity purified goat polyclonal antibody raised against a peptide mapping at the C-terminus of LMP2 of human origin.

PRODUCT

Each vial contains 200 μ g IgG in 1.0 ml of PBS with < 0.1% sodium azide and 0.1% gelatin.

Blocking peptide available for competition studies, sc-16461 P, (100 μ g peptide in 0.5 ml PBS containing < 0.1% sodium azide and 0.2% BSA).

RESEARCH USE

For research use only, not for use in diagnostic procedures.

APPLICATIONS

LMP2 (C-20) is recommended for detection of LMP2 of mouse, rat and human origin by Western Blotting (starting dilution 1:200, dilution range 1:100-1:1000), immunoprecipitation [1-2 μ g per 100-500 μ g of total protein (1 ml of cell lysate)], immunofluorescence (starting dilution 1:50, dilution range 1:50-1:500) and solid phase ELISA (starting dilution 1:30, dilution range 1:30-1:3000).

LMP2 (C-20) is also recommended for detection of LMP2 in additional species, including equine, canine, bovine and porcine.

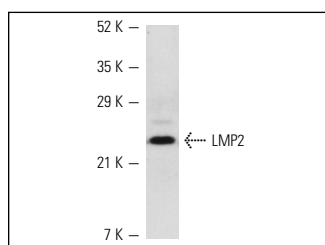
Suitable for use as control antibody for LMP2 siRNA (h): sc-35820, LMP2 siRNA (m): sc-35821, LMP2 shRNA Plasmid (h): sc-35820-SH, LMP2 shRNA Plasmid (m): sc-35821-SH, LMP2 shRNA (h) Lentiviral Particles: sc-35820-V and LMP2 shRNA (m) Lentiviral Particles: sc-35821-V.

Molecular Weight of mature LMP2: 21 kDa.

Molecular Weight of LMP2 precursor: 23 kDa.

Positive Controls: Daudi + IFN- α cell lysate: sc-2266, Daudi cell lysate: sc-2415 or Ramos cell lysate: sc-2216.

DATA



LMP2 (C-20): sc-16461. Western blot analysis of LMP2 expression IFN α -treated Daudi whole cell lysate.

SELECT PRODUCT CITATIONS

1. Eleftheriadis, T., et al. 2006. Major histocompatibility complex class I restricted T-cell autoreactivity in human peripheral blood mononuclear cells. *Cell. Immunol.* 240: 62-67.

STORAGE

Store at 4° C, ****DO NOT FREEZE****. Stable for one year from the date of shipment. Non-hazardous. No MSDS required.

PROTOCOLS

See our web site at www.scbt.com or our catalog for detailed protocols and support products.



Try **LMP2 (G-3): sc-373996** or **LMP2 (G-2): sc-373971**, our highly recommended monoclonal alternatives to LMP2 (C-20).