

# LIX1 (C-14): sc-164879

## BACKGROUND

LIX1 (protein limb expression 1 homolog), also known as C5orf11, is a 282 amino acid protein belonging to the LIX1 family. Other members of the LIX1 family include LIX1L (LIX1-like protein). Although the function of LIX1 is unknown, the predicted secondary structure is compatible with a role in RNA metabolism. The C-terminal 100 amino acids of LIX1 also have a 98% probability of forming a coiled-coil structure. Therefore, LIX1 may interact with the many coiled-coil proteins found in most cells. LIX1 expression is largely restricted to the central nervous system, primarily in spinal motor neurons. The gene encoding LIX1 maps to human chromosome 5q15 and mouse chromosome 17 A3.2

## REFERENCES

- Roy, N., Mahadevan, M.S., McLean, M., Shutler, G., Yaraghi, Z., Farahani, R., Baird, S., Besner-Johnston, A., Lefebvre, C. and Kang, X. 1995. The gene for neuronal apoptosis inhibitory protein is partially deleted in individuals with spinal muscular atrophy. *Cell* 80: 167-178.
- Beck, K. and Brodsky, B. 1998. Supercoiled protein motifs: the collagen triple-helix and the  $\alpha$ -helical coiled coil. *J. Struct. Biol.* 122: 17-29.
- Swindell, E.C., Moeller, C., Thaller, C. and Eichele, G. 2001. Cloning and expression analysis of chicken Lix1, a founding member of a novel gene family. *Mech. Dev.* 109: 405-408.
- Moeller, C., Yaylaoglu, M.B., Alvarez-Bolado, G., Thaller, C. and Eichele, G. 2002. Murine Lix1, a novel marker for substantia nigra, cortical layer 5, and hindbrain structures. *Brain Res. Gene Expr. Patterns* 1: 199-203.
- He, Q., Lowrie, C., Shelton, G.D., Castellani, R.J., Menotti-Raymond, M., Murphy, W., O'Brien, S.J., Swanson, W.F. and Fyfe, J.C. 2005. Inherited motor neuron disease in domestic cats: a model of spinal muscular atrophy. *Pediatr. Res.* 57: 324-330.

## CHROMOSOMAL LOCATION

Genetic locus: LIX1 (human) mapping to 5q15; Lix1 (mouse) mapping to 17 A3.2; Gm11578 (mouse) mapping to 1 C2.

## SOURCE

LIX1 (C-14) is an affinity purified goat polyclonal antibody raised against a peptide mapping near the C-terminus of LIX1 of human origin.

## PRODUCT

Each vial contains 200  $\mu$ g IgG in 1.0 ml of PBS with < 0.1% sodium azide and 0.1% gelatin.

Blocking peptide available for competition studies, sc-164879 P, (100  $\mu$ g peptide in 0.5 ml PBS containing < 0.1% sodium azide and 0.2% BSA).

## STORAGE

Store at 4° C, \*\*DO NOT FREEZE\*\*. Stable for one year from the date of shipment. Non-hazardous. No MSDS required.

## APPLICATIONS

LIX1 (C-14) is recommended for detection of LIX1 and OTTMUSG0000002255 of mouse, rat and human origin by Western Blotting (starting dilution 1:200, dilution range 1:100-1:1000), immunoprecipitation [1-2  $\mu$ g per 100-500  $\mu$ g of total protein (1 ml of cell lysate)], immunofluorescence (starting dilution 1:50, dilution range 1:50-1:500) and solid phase ELISA (starting dilution 1:30, dilution range 1:30-1:3000).

LIX1 (C-14) is also recommended for detection of LIX1 and OTTMUSG0000002255 in additional species, including equine, canine, bovine and porcine.

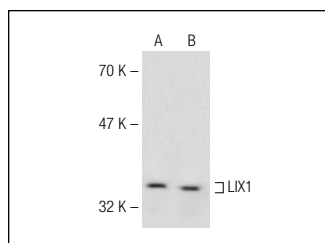
Molecular Weight of LIX1: 32 kDa.

Positive Controls: HeLa whole cell lysate: sc-2200 or Hep G2 cell lysate: sc-2227.

## RECOMMENDED SECONDARY REAGENTS

To ensure optimal results, the following support (secondary) reagents are recommended: 1) Western Blotting: use donkey anti-goat IgG-HRP: sc-2020 (dilution range: 1:2000-1:100,000) or Cruz Marker™ compatible donkey anti-goat IgG-HRP: sc-2033 (dilution range: 1:2000-1:5000), Cruz Marker™ Molecular Weight Standards: sc-2035, TBS Blotto A Blocking Reagent: sc-2333 and Western Blotting Luminol Reagent: sc-2048. 2) Immunoprecipitation: use Protein A/G PLUS-Agarose: sc-2003 (0.5 ml agarose/2.0 ml). 3) Immunofluorescence: use donkey anti-goat IgG-FITC: sc-2024 (dilution range: 1:100-1:400) or donkey anti-goat IgG-TR: sc-2783 (dilution range: 1:100-1:400) with UltraCruz™ Mounting Medium: sc-24941.

## DATA



LIX1 (C-14): sc-164879. Western blot analysis of LIX1 expression in HeLa (A) and Hep G2 (B) whole cell lysates.

## RESEARCH USE

For research use only, not for use in diagnostic procedures.

## PROTOCOLS

See our web site at [www.scbt.com](http://www.scbt.com) or our catalog for detailed protocols and support products.