

# MYBPH (P-13): sc-165049

## BACKGROUND

MYBPH (myosin binding protein H), also known as H-protein, is a 477 amino acid protein that is expressed in skeletal muscle, where it is thought to interact with the thick myofilaments in the A-band of Myosin. A member of the MYBP family and immunoglobulin superfamily, MYBPH contains two fibronectin type-III domains and two Ig-like C2-type (immunoglobulin-like) domains. The gene encoding MYBPH maps to human chromosome 1, which spans 260 million base pairs, contains over 3,000 genes and comprises nearly 8% of the human genome. Chromosome 1 houses a large number of disease-associated genes, including those that are involved in familial adenomatous polyposis, Stickler syndrome, Parkinson's disease, Gaucher disease, schizophrenia and Usher syndrome. Aberrations in chromosome 1 are found in a variety of cancers, including head and neck cancer, malignant melanoma and multiple myeloma.

## REFERENCES

- Vaughan, K.T., et al. 1993. Human myosin-binding protein H (MyBP-H): complete primary sequence, genomic organization, and chromosomal localization. *Genomics* 16: 34-40.
- Eudy, J.D., et al. 1998. Mutation of a gene encoding a protein with extracellular matrix motifs in Usher syndrome type IIa. *Science* 280: 1753-1757.
- Gruen, M., et al. 1999. Mutations in  $\beta$ -myosin S2 that cause familial hypertrophic cardiomyopathy (FHC) abolish the interaction with the regulatory domain of myosin-binding protein-C. *J. Mol. Biol.* 286: 933-949.
- Tayebi, N., et al. 2001. Gaucher disease and parkinsonism: a phenotypic and genotypic characterization. *Mol. Genet. Metab.* 73: 313-321.
- Welikson, R.E., et al. 2002. The C-terminal Ig1 domains of myosin-binding proteins C and H (MyBP-C and MyBP-H) are both necessary and sufficient for the intracellular crosslinking of sarcomeric myosin in transfected non-muscle cells. *J. Cell Sci.* 115: 3517-3526.
- Plasilova, M., et al. 2004. Exclusion of an extracolonic disease modifier locus on chromosome 1p33-36 in a large Swiss familial adenomatous polyposis kindred. *Eur. J. Hum. Genet.* 12: 365-371.
- Betarbet, R., et al. 2008. Fas-associated factor 1 and Parkinson's disease. *Neurobiol. Dis.* 31: 309-315.
- Holliday, E.G., et al. 2009. Strong evidence for a novel schizophrenia risk locus on chromosome 1p31.1 in homogeneous pedigrees from Tamil Nadu, India. *Am. J. Psychiatry* 166: 206-215.
- Balcárková, J., et al. 2009. Gain of chromosome arm 1q in patients in relapse and progression of multiple myeloma. *Cancer Genet. Cytogenet.* 192: 68-72.

## CHROMOSOMAL LOCATION

Genetic locus: MYBPH (human) mapping to 1q32.1; Mybph (mouse) mapping to 1 E4.

## SOURCE

MYBPH (P-13) is an affinity purified goat polyclonal antibody raised against a peptide mapping within an internal region of MYBPH of mouse origin.

## PRODUCT

Each vial contains 200  $\mu$ g IgG in 1.0 ml of PBS with < 0.1% sodium azide and 0.1% gelatin.

Blocking peptide available for competition studies, sc-165049 P, (100  $\mu$ g peptide in 0.5 ml PBS containing < 0.1% sodium azide and 0.2% BSA).

## APPLICATIONS

MYBPH (P-13) is recommended for detection of MYBPH of mouse, rat and human origin by Western Blotting (starting dilution 1:200, dilution range 1:100-1:1000), immunoprecipitation [1-2  $\mu$ g per 100-500  $\mu$ g of total protein (1 ml of cell lysate)], immunofluorescence (starting dilution 1:50, dilution range 1:50-1:500) and solid phase ELISA (starting dilution 1:30, dilution range 1:30-1:3000); non cross-reactive with MYBPHL.

Suitable for use as control antibody for MYBPH siRNA (h): sc-88038, MYBPH siRNA (m): sc-149732, MYBPH shRNA Plasmid (h): sc-88038-SH, MYBPH shRNA Plasmid (m): sc-149732-SH, MYBPH shRNA (h) Lentiviral Particles: sc-88038-V and MYBPH shRNA (m) Lentiviral Particles: sc-149732-V.

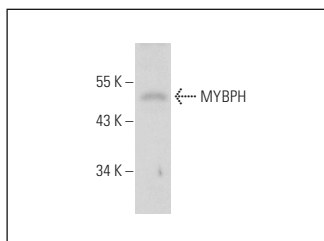
Molecular Weight of MYBPH: 52 kDa.

Positive Controls: Sol8 cell lysate: sc-2249.

## RECOMMENDED SECONDARY REAGENTS

To ensure optimal results, the following support (secondary) reagents are recommended: 1) Western Blotting: use donkey anti-goat IgG-HRP: sc-2020 (dilution range: 1:2000-1:100,000) or Cruz Marker™ compatible donkey anti-goat IgG-HRP: sc-2033 (dilution range: 1:2000-1:5000), Cruz Marker™ Molecular Weight Standards: sc-2035, TBS Blotto A Blocking Reagent: sc-2333 and Western Blotting Luminol Reagent: sc-2048. 2) Immunoprecipitation: use Protein A/G PLUS-Agarose: sc-2003 (0.5 ml agarose/2.0 ml). 3) Immunofluorescence: use donkey anti-goat IgG-FITC: sc-2024 (dilution range: 1:100-1:400) or donkey anti-goat IgG-TR: sc-2783 (dilution range: 1:100-1:400) with UltraCruz™ Mounting Medium: sc-24941.

## DATA



MYBPH (P-13): sc-165049. Western blot analysis of MYBPH expression in Sol8 whole cell lysate.

## STORAGE

Store at 4° C, \*\*DO NOT FREEZE\*\*. Stable for one year from the date of shipment. Non-hazardous. No MSDS required.

## RESEARCH USE

For research use only, not for use in diagnostic procedures.