

NLF2 (E-16): sc-165116

BACKGROUND

NLF2 (nuclear-localized factor 2), also known as C2CD4B (C2 calcium-dependent domain-containing protein 4B) or FAM148B, is a 364 amino acid nuclear protein that belongs to the C2CD4 family and contains one C2 domain. Thought to regulate cell architecture and adhesion, NLF2 may be involved in the inflammatory process. NLF2 is specifically expressed in endothelial cells and is upregulated by proinflammatory cytokines. The gene that encodes NLF2 consists of approximately 1,746 bases and maps to human chromosome 15q22.2. Chromosome 15 houses over 700 genes and comprises nearly 3% of the human genome. Angelman syndrome, Prader-Willi syndrome, Tay-Sachs disease and Marfan syndrome are all associated with defects in chromosome 15-localized genes.

REFERENCES

- Hurowitz, G.I., et al. 1993. Neuropsychiatric aspects of adult-onset Tay-Sachs disease: two case reports with several new findings. *J. Neuropsychiatry Clin. Neurosci.* 5: 30-36.
- Midla, G.S. 2008. Diagnosis and management of patients with Marfan syndrome. *JAAPA* 21: 21-25.
- Dan, B. 2009. Angelman syndrome: current understanding and research prospects. *Epilepsia* 50: 2331-2339.
- Ferrer-Bolufer, I., et al. 2009. Tyrosinemia type 1 and Angelman syndrome due to paternal uniparental isodisomy 15. *J. Inherit. Metab. Dis.* 32: S349-S353.
- Boesgaard, T.W., et al. 2010. Variants at DGKB/TMEM195, ADRA2A, GLIS3 and C2CD4B loci are associated with reduced glucose-stimulated β cell function in middle-aged Danish people. *Diabetologia* 53: 1647-1655.
- Yamauchi, T., et al. 2010. A genome-wide association study in the Japanese population identifies susceptibility loci for type 2 diabetes at UBE2E2 and C2CD4A-C2CD4B. *Nat. Genet.* 42: 864-868.
- Wawrzik, M., et al. 2010. The C15orf2 gene in the Prader-Willi syndrome region is subject to genomic imprinting and positive selection. *Neurogenetics* 11: 153-161.
- Shu, X.O., et al. 2010. Identification of new genetic risk variants for type 2 diabetes. *PLoS Genet.* 6: e1001127.

CHROMOSOMAL LOCATION

Genetic locus: C2CD4B (human) mapping to 15q22.2.

SOURCE

NLF2 (E-16) is an affinity purified goat polyclonal antibody raised against a peptide mapping near the N-terminus of NLF2 of human origin.

PRODUCT

Each vial contains 200 μ g IgG in 1.0 ml of PBS with < 0.1% sodium azide and 0.1% gelatin.

Blocking peptide available for competition studies, sc-165116 P, (100 μ g peptide in 0.5 ml PBS containing < 0.1% sodium azide and 0.2% BSA).

APPLICATIONS

NLF2 (E-16) is recommended for detection of NLF2 of human origin by Western Blotting (starting dilution 1:200, dilution range 1:100-1:1000), immunoprecipitation [1-2 μ g per 100-500 μ g of total protein (1 ml of cell lysate)], immunofluorescence (starting dilution 1:50, dilution range 1:50-1:500) and solid phase ELISA (starting dilution 1:30, dilution range 1:30-1:3000); non cross-reactive with NLF1.

Suitable for use as control antibody for NLF2 siRNA (h): sc-90036, NLF2 shRNA Plasmid (h): sc-90036-SH and NLF2 shRNA (h) Lentiviral Particles: sc-90036-V.

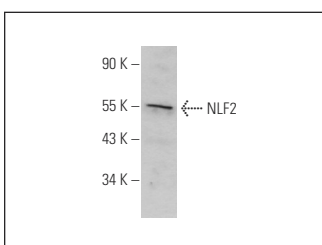
Molecular Weight of NLF2: 39 kDa.

Positive Controls: HeLa whole cell lysate: sc-2200.

RECOMMENDED SECONDARY REAGENTS

To ensure optimal results, the following support (secondary) reagents are recommended: 1) Western Blotting: use donkey anti-goat IgG-HRP: sc-2020 (dilution range: 1:2000-1:100,000) or Cruz Marker™ compatible donkey anti-goat IgG-HRP: sc-2033 (dilution range: 1:2000-1:5000), Cruz Marker™ Molecular Weight Standards: sc-2035, TBS Blotto A Blocking Reagent: sc-2333 and Western Blotting Luminol Reagent: sc-2048. 2) Immunoprecipitation: use Protein A/G PLUS-Agarose: sc-2003 (0.5 ml agarose/2.0 ml). 3) Immunofluorescence: use donkey anti-goat IgG-FITC: sc-2024 (dilution range: 1:100-1:400) or donkey anti-goat IgG-TR: sc-2783 (dilution range: 1:100-1:400) with UltraCruz™ Mounting Medium: sc-24941.

DATA



NLF2 (E-16): sc-165116. Western blot analysis of NLF2 expression in HeLa whole cell lysate.

STORAGE

Store at 4° C, ****DO NOT FREEZE****. Stable for one year from the date of shipment. Non-hazardous. No MSDS required.

RESEARCH USE

For research use only, not for use in diagnostic procedures.

PROTOCOLS

See our web site at www.scbt.com or our catalog for detailed protocols and support products.